

Shelley Cohen  
Director, Solar Programs

# Solar for All at the DCSEU



DC  
SUSTAINABLE ENERGY  
UTILITY



The DC Sustainable Energy Utility (DCSEU) and the Department of Energy & Environment (DOEE) are working with local solar developers to design and install solar photovoltaic (PV) systems **at no cost to income-qualified District homeowners**. These systems have the potential to offset electricity costs by as much as \$500 each year, saving residents money for years to come.



# DCSEU Solar for All Program



- ▶ 3-year program, currently in 2nd year
- ▶ Rapid deployment of solar across DC
- ▶ 25 MW Community Solar
- ▶ Solar installed on 300 homes
- ▶ All solar output goes to income qualified homeowners/residents
- ▶ Boost solar economy and solar penetration in DC
- ▶ Increase green jobs

# DCSEU Solar for All Team

- ◆ Shelley Cohen,  
*Director, Solar Programs*
- ◆ Philip Haddix  
*Program Manager, CREF*
- ◆ Taryor Tingba  
*Program Manager, SF*
- ◆ Sam Jacobson  
*Solar Program Engineer*
- ◆ Antoine Grant  
*Solar Program Associate*
- ◆ Erin Lee  
*Solar Program Associate*
- ◆ Yazan Zafar  
*Solar Program Associate*





# Washington DC: Current Solar Market Conditions

- Despite being a small City with limited space, DC is one of the best solar markets in the US thanks to robust incentives and favorable legislation
- Incentives support the rapid deployment of solar across DC
  - 2018 Omnibus Energy Act
  - DC to go to 100% renewable by 2032
  - Need 3000MW or 3GW of solar



ITC  
Federal Investment  
Tax Credit



Solar Renewable  
Energy Credits  
(SRECs)



Supportive Regulatory  
Environment

## 2019 Community Renewable Energy Facility (CREF) Project Recap

Total CREFs: 84 interconnection points

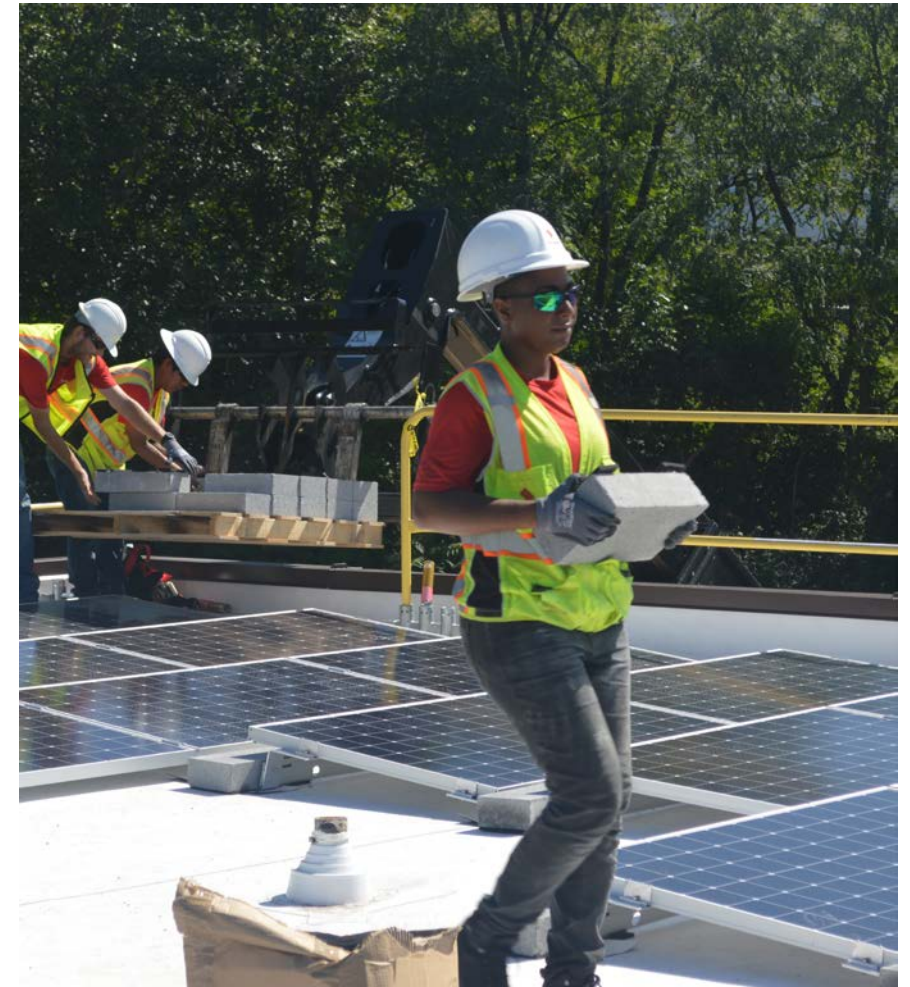
- ▶ 4,760 Metric tons GHG savings from first-year production
- ▶ Total output: 7.2MW
- ▶ All output is designated to income-qualified subscribers
- ▶ Each subscriber will receive approximately 3.5kw of output.
- ▶ Approximately 2,000 subscribers can benefit from 7MW of solar







Solar Applications:  
**CREF**



DCSEU | September, 2020



# Children's National at Walter Reed

Washington, DC

 Fri, Mar 27th, 2020 10:59 AM

 57° F

 Change View

 Share

 Time-Lapses





# 2019 SF Project Recap

- 86 residential installs completed by September 30
- A total of \$698,770 in incentives were paid to subcontractors
- The 86 homes will generate a total of 414.81 kW
- Estimated annual production 477,000 MWh/yr
- Carbon emissions reduction 0.337 Metric Tons
- Homeowner savings: it is estimated that homes will experience a 60-75% reduction in utility bills for the 86 households - based on the 4,200 kWh/yr value cited by DOEE



Solar Applications:  
**Single Family**



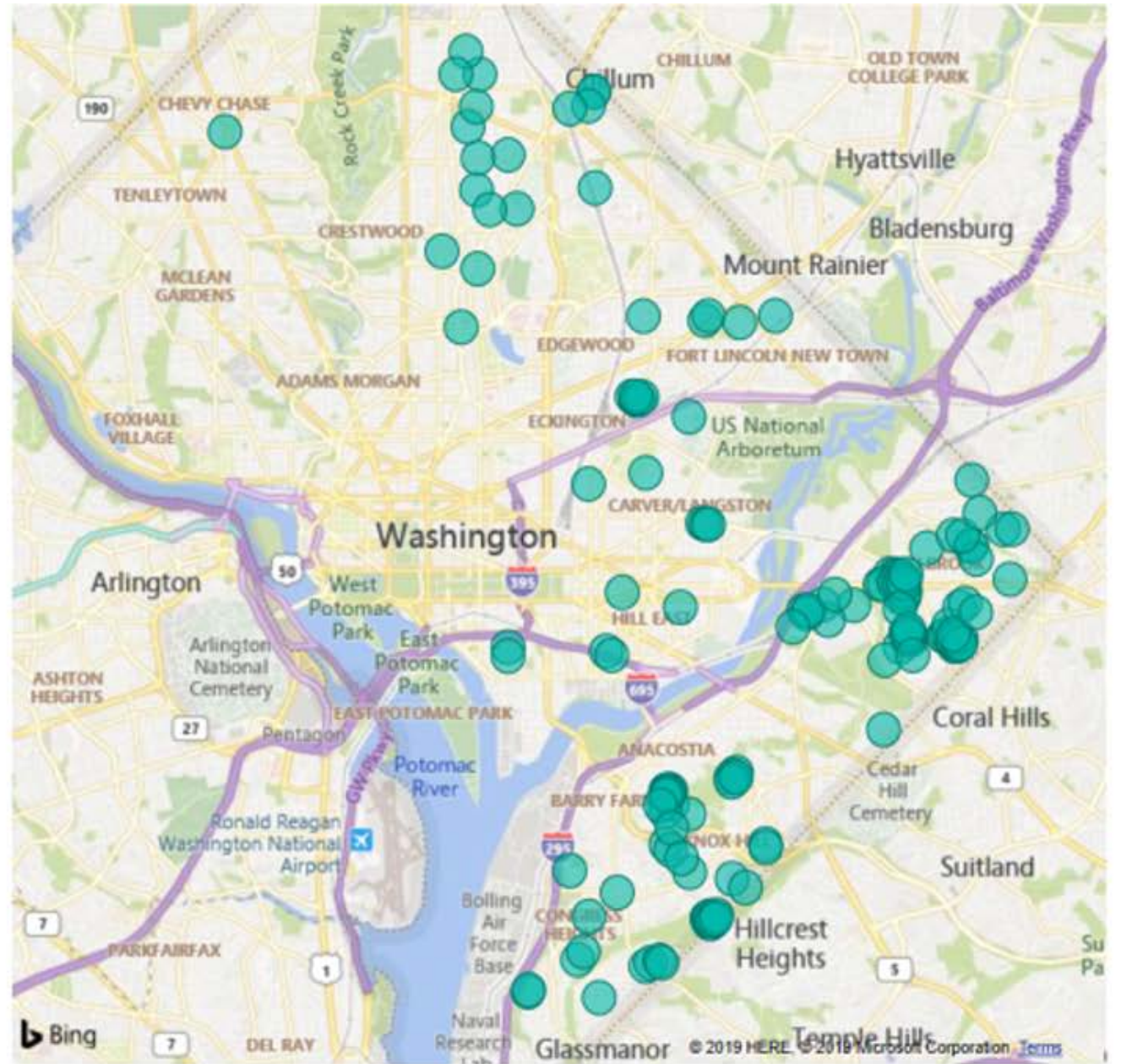
DC  
SUSTAINABLE ENERGY  
UTILITY





# Solar for All 2019 Projects

- Represents **86 single family homes** totaling 430kw
- Represents **84 CREF projects** totaling 7.2MW solar



# FY 2020 Program Update

- Total Funding: \$8M in incentives
  - All projects finalized by 9/30, including DCRA inspection and Pepco ATO
  - 100% of the actual measured electrical output for 20 years must be designated to DOEE (CREF) and the homeowner (SF)
  - Systems must generate at least 90% of the annual expected electrical output every year for 20 years
  - Subcontractors must operate and maintain the system, track and report the actual electrical output for 20 years
- Project Update – Community Solar (CREF):
  - 54 CREFs totaling close to 7MA
  - Approx 7M in incentives
- Program Update – Residential (SF)
  - 115 homes
  - Approximately 1M in incentives





# Solar for All Milestones



## milestone

- DCRA Permit received
- Pepco Authorization to Install (ATI) received
- Construction schedule



## milestone

- Evidence equipment has been purchased by Solar Contractor (CREF: 35% of Incentive Payment)



## milestone

- DCRA inspection
- DCSEU Substantial Completion report
- Pepco Authorization to Operate (ATO) Initiated (CREF) received (SF) (CREF: 65% of Incentive Payment) (SF: 100% of Incentive Payment)



## milestone

- Register with the PSC
- Pepco Authorization to Operate (ATO) received
- Receive inverter information

# Income Qualification for SF and CREF

- Receive assistance from one of the following:
  - Utility discount from PEPCO, Verizon, DC Water, or Washington Gas
  - Supplemental Nutrition Assistance Program (SNAP)
  - Temporary Assistance for Needy Families (TANF)
  - Supplemental Security Income (SSI)
  - Low Income Home Energy Assistance Program (LIHEAP)
  - Other Government assistance program

- Meet the following income qualifications\*:

Household Size	1	2	3	4	5	6	7	8
Maximum Annual Income	\$70,600	\$80,650	\$90,750	\$100,800	\$108,900	\$116,950	\$125,000	\$133,100

\*customers will be required to provide SSN numbers and valid income documents for all members for the household to enroll in program



# Questions?





DC  
SUSTAINABLE ENERGY  
UTILITY

## Shelley Cohen

Director, Solar Programs

**E** [scohen@dcseu.com](mailto:scohen@dcseu.com)

**P** (202) 870-1361

**D** (202) 677-4828

80 M Street SE, Suite 310

Washington, DC 20013

**DCSEU.com**

**f** [facebook.com/dcseu](https://facebook.com/dcseu)

**t** [twitter.com/dcseu](https://twitter.com/dcseu)

