

# **Law and Regulations Review**

**AR Training  
Updated 2012**

**DMME**

**Division of Mineral Mining**

# Why Annual Refresher Training?

- Requirement of State and Federal Law
- Review of changes at the mines that may affect safety
- Review of safety principles
- Review of pertinent safety rules, laws and regulations
- Review of First Aid Principles
- Ultimate Goal = Prevention of Accidents

# DMM Training Requirements?

▶▶ Section **45.1-161.292:73** of the *Mineral Mine Safety Laws of Virginia* requires an “Operator” or “independent contractor” to have a training plan containing training programs for:

- ▶ New miners; must include GMM certification.
- ▶ Newly employed experienced miners.
- ▶ New task.
- ▶ Annual refresher.
- ▶ Hazard training.

# **General Provisions**

- Individual accountability.
- Certain responsibilities assigned to mine operators, foremen, blasters, miners, and independent contractors.
- Violations of State mining laws or DMM safety and health regulations are issued to the person, or persons, responsible for the violation.

# Responsibility For Compliance

- Owners & managers.
- Certified foremen.
- Mine employees.
- Contractors.
- Truckers.
- Any other person on mine property.



# **Compliance With DMM Regulations (4VAC25-40-190)**

- Once properly trained, miners must comply with DMM Safety & Health Regulations applicable to their assigned task or duties.
- Notice of Violation issued to the person(s) responsible for the violation.

# **DMM Training Requirements**

- Mining companies and independent contractors must have a complete “Mineral Mining Safety Training Plan”.
- New miner training must include GMM training and certification prior to starting work.
- New or re-assigned employees must be trained in DMM safety and health regulations and company safety rules.
- Once properly trained, each person is individually accountable for complying with State mining laws & regulations applicable to their work.

# **“MINER”**

Means any person working in a mineral mine. Persons performing work related to stripping, drilling, blasting, or processing must be “certified” as general mineral miners (GMM).

# **GMM Certification Training (4VAC25-35-120)**

- Review of “Mineral Mine Safety Laws of Virginia”.
- Review of DMM “Safety & Health Regulations For Mineral Mining”.
- Review of emergency first aid methods; trauma, external/internal bleeding, shock, fractures, and exposure to heat/cold.

# Inexperienced Employees

## 4VAC25-40-110

- Miners with less than 6-months experience must work with, or under the direction of an experienced miner.
- No one under 18 allowed to work at mines.



*Company using red hard hat to identify new miners.*

# **Task Training**

## **4VAC25-40-100**

- New or re-assigned miners must be trained in equipment manufacturer's operating procedures, applicable DMM regulations, and company rules related to task. As well as:
- Specific hazards related to the task.
- Specific pre-operational inspection procedures.
- Records of “task training” must be kept.

# **Reporting Accidents to DMM: Laws & Regulations**

- Promptly report fatal or “serious personal injury” (admitted to hospital for 24 or more hours) accidents to DMM , and secure the accident scene until DMM arrives (45.1-161.292:51).
- If admission to hospital not expected, data & photographs to be provided (4VAC25-40-50).
- Other types of accidents must be reported to DMM for risk analysis (45.1-161.292:52).

# **Report to DMM, “By The Quickest Means Available”, The following:**

- Death or “Serious Personal Injury” – Means any injury which has a reasonable potential to cause death or which requires admission to a hospital for 24 hours or more for treatment. **Also**, if a person becomes unconscious for any length of time.
- Mine fire – An unplanned fire not extinguished within 30 minutes of discovery.
- Any unplanned explosion at a mine site.
- Any flyrock incident.

# Posting Emergency Telephone Numbers (4VAC25-40-170)

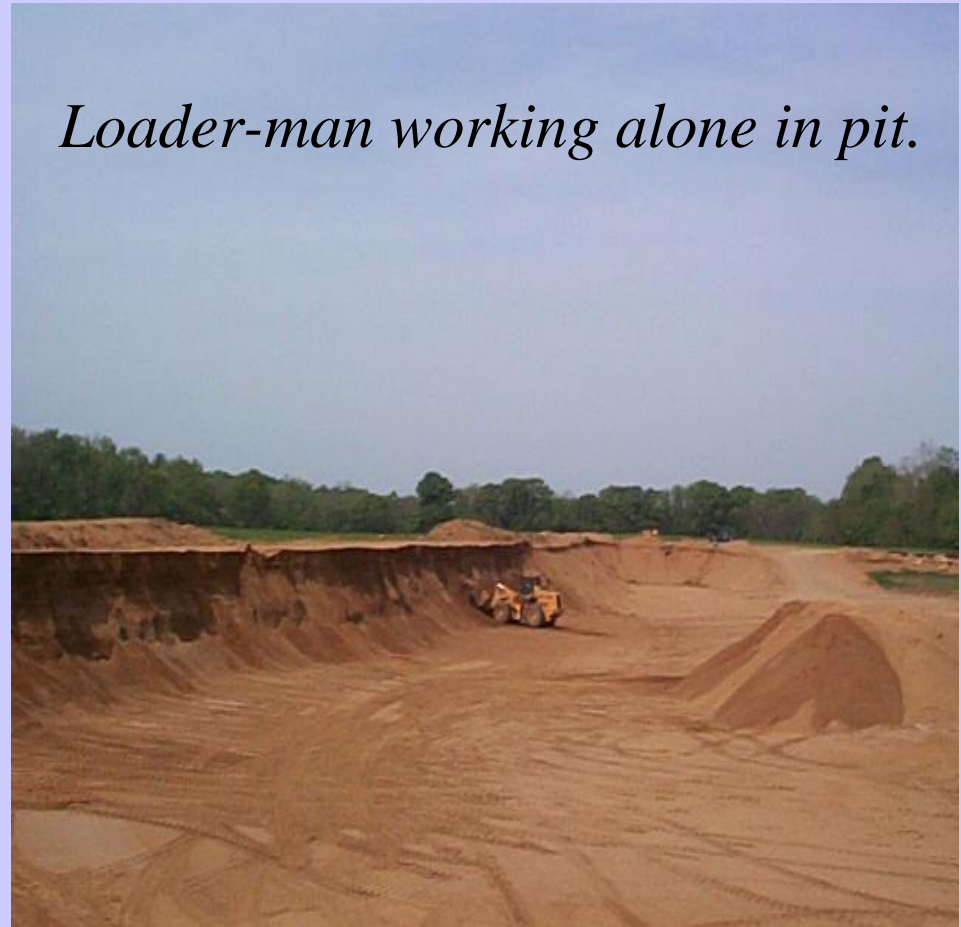
- Telephone numbers for fire, rescue, and state mine inspectors must be posted.
- Telephone numbers for DMM office and all state mine inspectors must be posted at mine.



# Mine Communications System

## 4VAC25-40-180

- A communication system must be provided to summons help in case of mine emergency: telephone, cell-phone, company radio, CB, etc.



# Posting Hazard Signs

## 4VAC25-40-260

- Warning signs specifying hazard(s) must be posted in areas where the hazard is not obvious.



# Finger Rings Prohibited

## 4VAC25-40-1780



# Reflective Material On PPE

## 4VAC25-40-1785

- On hat or clothing when working at night or in underground locations.
- Visible from all directions.



# Working From Bucket Prohibited

## 4VAC25-40-1680

- Working from a raised F-E loader bucket not allowed.
- Use man-lifts designed to lift persons.



# Pre-Operational Inspections

## (4VAC25-40-145)

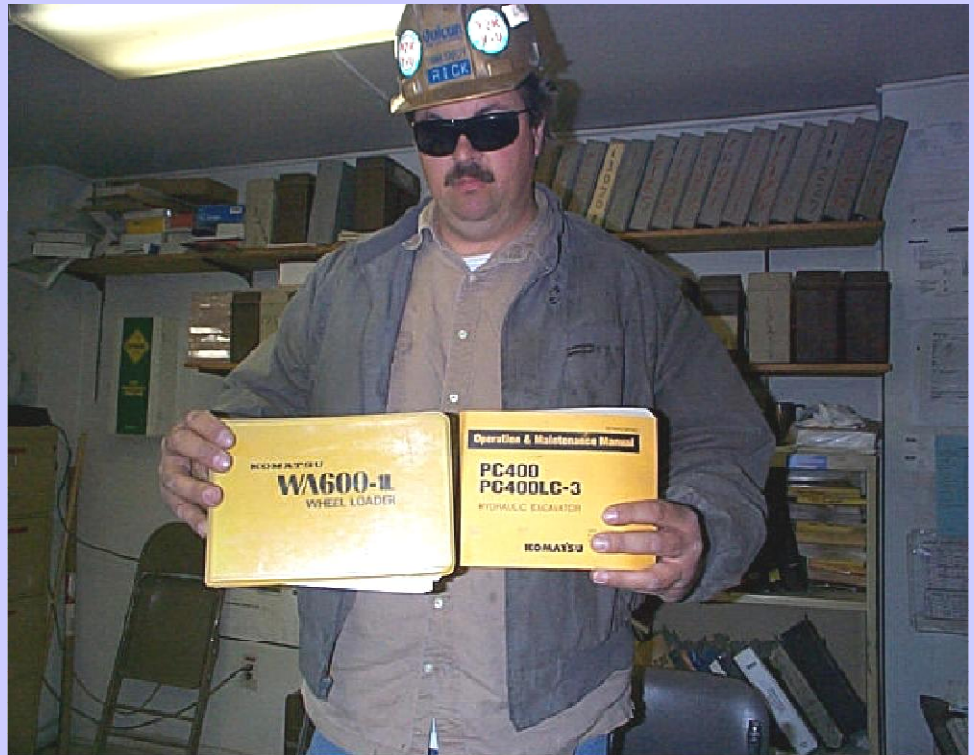
- Mobile and stationary equipment that is to be used during a shift shall be inspected by the equipment operator.
- Equipment safety defects shall be reported to the certified mine foreman.
- Defects that affect the safety or health of persons shall be corrected before the equipment is used.



# Safety Defects Must Be Corrected Before Equipment Is Operated

- Equipment must be maintained in accordance with manufacturer's specifications

**(4VAC25-40-360)**



# Working Around Water

## 4VAC25-40-1700

- Life jacket must be worn when working beyond railed walkways.
- Life jacket required when there is a danger of falling into water.



# Use Of Pit Pumps

- Task training required for persons assigned to operate and service the pumps.
- Provide safe access to the pump location.



# Repairing Mobile Equipment

## 4VAC25-40-1680

- Equipment power off and tagged-out.
- Blocked against hazardous motion.



**This method of repair represents an imminent danger!**



## Let's Discuss This Repair Procedure.

- Are chocks being used?  
Wheels? Under bucket?
- Is the loader tagged out?



# Stockpile Safety Requirements



- Stockpile loader operator should trim pile prior to moving.

- Keep trimmed to angle of repose (4VAC25-40-480) to ensure stability.



Hazardous Stockpile at clay pit.

# Stockpile Areas

- Stockpiles must be trimmed (graded) so that they do not pose a hazard to persons working around them.

**(4 VAC 25-40-480)**



# Protection From Falling Material

## 4VAC25-40-1800

- Barricade access to grizzly impact area.
- Post warning signs.



# Confined Space Entry

## 4VAC25-40-2550

- Lock-out & tag-out supply & discharge conveyors.
- Wear safety harness with attended life-line.
- Enter from top, bar-down loose material to avoid entrapment.



Confined spaces include dryers, bins, hoppers, silos and tanks.