

BEFORE THE VIRGINIA GAS AND OIL BOARD

PETITIONER: CNX Gas Company LLC

DIVISION OF GAS AND OIL

DOCKET NO: VGOB 98-0421-0651-01

RELIEF SOUGHT: (1) DISBURSEMENT FROM ESCROW REGARDING TRACT(S) 3B (2) AND AUTHORIZATION FOR DIRECT PAYMENT OF ROYALTIES

HEARING DATE: February 15, 2016

DRILLING UNIT: U37

BUCHANAN COUNTY, VIRGINIA

PETITION FOR ORDER OF DISBURSEMENT OF ESCROW FUNDS

1. Petitioner and its counsel

Petitioner is CNX Gas Company LLC, 627 Claypool Hill Mall Road, Cedar Bluff, VA 24609, (276) 596-5075. Petitioner's counsel is Mark A. Swartz, Hillard & Swartz, LLP, 122 Capital Street, Suite 201, Charleston, WV 25301.

2. Relief Sought

(1) the disbursement of escrowed funds heretofore deposited with the Board's Escrow Agent, attributable to Tract 3B, as depicted upon the annexed Exhibit A; and (2) authorization to begin paying royalties directly to the parties to the royalty split between Hurt McGuire Land Trust and Virginia Stilwell.

3. Legal Authority

Va. Code Ann. § 45.1-361.1 et seq., 4 VAC 25-160-140., and relevant Virginia Gas and Oil Board Orders ("Board") heretofore promulgated pursuant to law.

4. Type of Well(s)

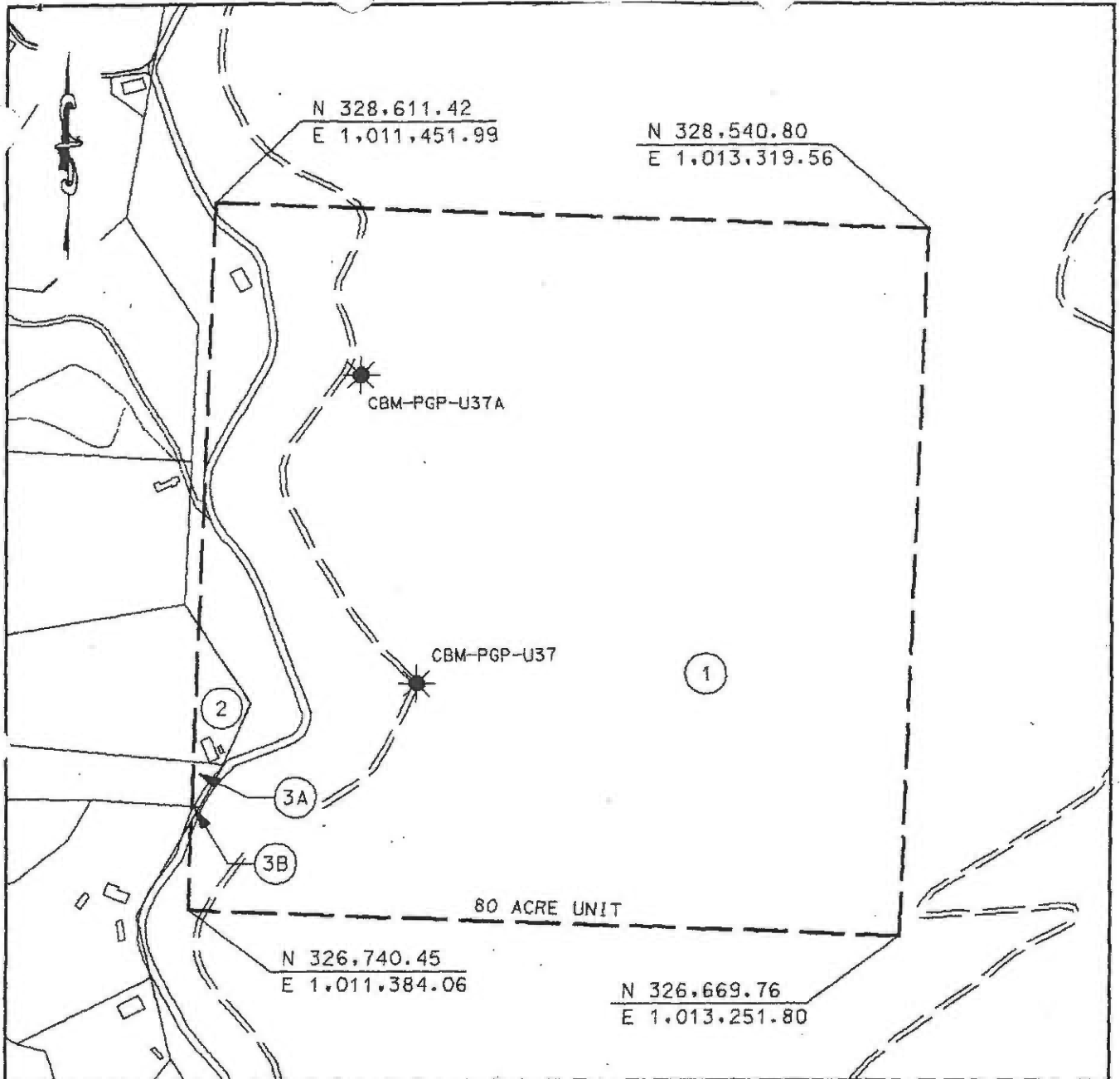
Coalbed Methane

5. Factual basis for relief requested

Hurt McGuire Land Trust and Virginia Stilwell have entered into royalty split agreement(s). Said royalty split agreement allows the Applicant and Designated Operator to pay royalties directly to the persons identified in Exhibit EE annexed hereto and the annexed Exhibit A, further, specifies how said royalties are to be divided and paid.

6. Attestation

The foregoing Petition to the best of my knowledge, information, and belief is true and correct.



LEGEND

- ← TRACT LAND HOOK
- 2 TRACT LAND ID'S

EXHIBIT A
OAKWOOD FIELD UNIT U-37
FORCE POOLING
VGDB-98-0421-0651

Company Pocahontas Gas Partnership Well Name and Number UNIT U37
 Tract No. _____ Elevation _____ Quadrangle Jewell Ridge
 County Buchanan District Garden Scale: 1" = 400' Date: 3/12/98
 This plat is a new plat X ; an updated plat _____ ; or a final plat _____

Form DGO-60-7 _____ (AFFIX Seal)
 Rev. 9/91 Charles D. May
 Licensed Professional Engineer or Licensed Land Surveyor

POCAHONTAS GAS PARTNERSHIP

UNIT U-37

Tract Identification

1. Coal Mountain Mining . Tr 26 - Fee
Consolidation Coal Co. - Below drainage coal Leased
United Coal Company - Above drainage coal Leased
Pocahontas Gas Partnership - Oil & Gas Lessee
Pocahontas Gas Partnership - CBM Lessee
79.14 acres 98.9250%

2. New Garden Coal Co. - Coal, Oil & Gas
Consolidation Coal Co. - Below drainage coal Leased
United Coal Company - Above drainage coal Leased
Pocahontas Gas Partnership - Oil & Gas Lessee
Pocahontas Gas Partnership - CBM Lessee
Samuel Glenn Sproles - Surface
0.72 acres 0.9000%

- 3A. McGuire & Hurt Heirs - Coal
Consolidation Coal Co. - Below drainage coal Leased
United Coal Company - Above drainage coal Leased
Pocahontas Gas Partnership - CBM Lessee
Samuel Glenn Sproles - Surface, Oil & Gas
0.12 acres 0.1500%

- 3B. McGuire & Hurt Heirs - Coal
Consolidation Coal Co. - Below drainage coal Leased
United Coal Company - Above drainage coal Leased
Pocahontas Gas Partnership - CBM Lessee
Paul Stilwell - Surface, Oil & Gas
0.02 acres 0.0250%

Exhibit E
Unit U-37
Docket # VGOB 98-0421-0651-01
List of Respondents that require escrow

	Acres in Unit	Percent of Unit
<u>TRACT #3A - 0.12 acres</u>		
<u>COAL OWNERSHIP</u>		
(1) Hurt McGuire Land Trust c/o Charles Green P. O. Box 1067 Bluefield, VA 24605	0.12 acres	0.1500%
<u>OIL & GAS OWNERSHIP</u>		
<i>The respondents listed below did not respond timely to the W9 request and will continue to be escrowed.</i>		
(1) Samuel Glenn Sproles c/o Lucille Collins 5222 Stewartsville Road Moneta, VA 24121	0.12 acres	0.1500%

Exhibit EE
Unit U-37
Docket # VGOB 98-0421-0651-01
List of Respondents with Royalty Split Agreements/Court Orders/HB2058

		Acres in Unit	Percent of Unit	Percent of Escrow
<u>TRACT #3B - 0.02 acres</u>				
<u>COAL OWNERSHIP</u>				
(1)	Hurt & McGuire Heirs c/o Charles Green P.O. Box 1067 Bluefield, VA 24605	0.02 acres	0.0250%	7.1429%
<u>OIL & GAS OWNERSHIP</u>				
(1)	Virginia Stillwell 1106 Dial Road Raven, VA 24639	0.02 acres	0.0250%	7.1429%

AFFIDAVIT OF MAILING

COMMONWEALTH OF VIRGINIA
COUNTY OF **BUCHANAN**

Applicant: CNX Gas Company LLC
Relief Sought: Disbursement Petition for U37
VGOB: 98-0421-0651-01

I, Anita D. Duty, after being duly sworn upon oath, state as follows:

1. I am the Pooling Supervisor for CNX Land Resources, Inc. and am responsible for the notification process required by Va. Code Ann. §45.1-361.19 of the Code of Virginia and 4VAC25-160-40.
2. That on **December 22, 2015** a true and correct copy of the Notice of Hearing and Exhibits were mailed, via certified mail return receipt requested, based upon information and belief, the names and last-known addresses, where such addresses are known, of the parties owning an interest in this cause are set forth and attached hereto.
3. Notice of this cause has therefore been served by mail pursuant to the applicable statues and rules of the Board.

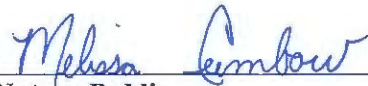


Anita D. Duty
 Pooling Supervisor
 for CNX Land LLC

STATE OF VIRGINIA

COUNTY OF TAZEWELL, TO-WIT:

TAKEN, SUBSCRIBED AND SWORN to before me this 21st day of January, 2016.



Notary Public

My commission expires: December 31, 2019



CERTIFICATION OF NOTICE
CNX Gas Company LLC

Unit U37
VGOB 98-0421-0651-01

Disbursement

Buchanan County

Last Name	First Name	MAILED	RECEIPT #	RECEIVED
Hurt-McGuire Land Trust		12/22/2015	70143490000189264509	Returned
Stillwell	Virginia	12/23/2015	70143490000189264493	11/11/2016

SENDER: COMPLETE THIS SECTION

- Complete items 1, 2, and 3.
- Print your name and address on the reverse so that we can return the card to you.
- Attach this card to the back of the mailpiece, or on the front if space permits.

Virginia N. Stilwell
1106 DIAL RD
Raven VA 24639-7542



9590 9403 0698 5196 3308 83

2. Article Number (Transfer from service label)

COMPLETE THIS SECTION ON DELIVERY

A. Signature

X *Virginia N. Stilwell* Agent
 Addressee

B. Received by (Printed Name)

C. Date of Delivery

Virginia N. Stilwell *11-11-16*

D. Is delivery address different from item 1? Yes
If YES, enter delivery address below: No

3. Service Type

- Adult Signature
- Adult Signature Restricted Delivery
- Certified Mail®
- Certified Mail Restricted Delivery
- Collect on Delivery
- Collect on Delivery Restricted Delivery
- Insured Mail
- Insured Mail Restricted Delivery (over \$500)
- Priority Mail Express®
- Registered Mail™
- Registered Mail Restricted Delivery
- Return Receipt for Merchandise
- Signature Confirmation™
- Signature Confirmation Restricted Delivery

PS Form 3811, April 2015 Edition, PSN 7530-02-000-9053

U37 D510 Domestic Return Receipt



7014 3490 0001 8926 4509

Attn: Pooling
P.O. Box 570
Pounding Mill, VA 24637

MC6ub67

Hurt McGuire Land Trust
c/o CHARLES GREEN
PO Box 1067
Bluefield VA 24605-4067

01/07/16

246052338-1N

RETURN TO SENDER
UNABLE TO FORWARD
UNABLE TO SENDER
RETURN TO SENDER

MIXLE



SENDER: COMPLETE THIS SECTION

- Complete items 1, 2, and 3.
- Print your name and address on the reverse so that we can return the card to you.
- Attach this card to the back of the mailpiece, or on the front if space permits.

1. Article Addressed to:

Hurt McGuire Land Trust
c/o CHARLES GREEN
PO Box 1067
Bluefield VA 24605-4067



9590 9403 0698 5196 3308 76

2. Article Number (Transfer from service label)

COMPLETE THIS SECTION ON DELIVERY

A. Signature
 X Agent
 Addressee

B. Received by (Printed Name) C. Date of Delivery

D. Is delivery address different from item 1? Yes
 If YES, enter delivery address below No

3. Service Type
- Adult Signature
 - Adult Signature Restricted Delivery
 - Certified Mail®
 - Certified Mail Restricted Delivery
 - Collect on Delivery
 - Collect on Delivery Restricted Delivery
 - Insured Mail
 - Insured Mail Restricted Delivery (over \$500)
 - Priority Mail Express®
 - Registered Mail™
 - Registered Mail Restricted Delivery
 - Return Receipt for Merchandise
 - Signature Confirmation™
 - Signature Confirmation Restricted Delivery

7014 3490 0001 8926 4509

Domestic Return Receipt

Exhibit J
Unit U37 Escrow Account Reconciliation
VGOB 98-0421-0651

CNX Deposit Information			Escrow Bank Data														
Check Date	Check Number	Total	Date	Escrow Royalty Deposits	Income	\$ Mkt Int	CDARS Int	Fees	Distributions	Audit Costs	Corrections	Gain/Loss	Royalty Bonus	Total Int. and Fees	Bank Balance	Running Balance	Difference
			9/30/2000	\$0.00	\$0.00				\$0.00					\$0.00	\$0.12	\$0.00	-\$0.12
			12/31/2000	\$0.00	\$0.00				\$0.00					\$0.00	\$0.12	\$0.00	-\$0.12
			1/31/2001	\$0.00	\$0.00				\$0.00					\$0.00	\$0.12	\$0.00	-\$0.12
			2/28/2001	\$0.00	\$0.00				\$0.00					\$0.00	\$0.12	\$0.00	-\$0.12
			3/31/2001	\$0.00	\$0.00				\$0.00					\$0.00	\$0.12	\$0.00	-\$0.12
			5/31/2001	\$0.00	\$0.00				\$0.00					\$0.00	\$0.12	\$0.00	-\$0.12
			6/30/2001	\$0.00	\$0.00				\$0.00					\$0.00	\$0.12	\$0.00	-\$0.12
			7/31/2001	\$0.00	\$0.00				\$0.00					\$0.00	\$0.12	\$0.00	-\$0.12
			8/31/2001	\$0.00	\$0.00				\$0.00					\$0.00	\$0.12	\$0.00	-\$0.12
			9/30/2001	\$0.00	\$0.00				\$0.00					\$0.00	\$0.12	\$0.00	-\$0.12
			10/31/2001	\$0.00	\$0.00				\$0.00					\$0.00	\$0.12	\$0.00	-\$0.12
			11/30/2001	\$0.00	\$0.00				\$0.00					\$0.00	\$0.12	\$0.00	-\$0.12
			12/31/2001	\$0.00	\$0.00				\$0.00					\$0.00	\$0.12	\$0.00	-\$0.12
			1/31/2002	\$0.00	\$0.00				\$0.00					\$0.00	\$0.12	\$0.00	-\$0.12
			2/28/2002	\$0.00	\$0.00				\$0.00					\$0.00	\$0.12	\$0.00	-\$0.12
			3/31/2002	\$0.00	\$0.00				\$0.00					\$0.00	\$0.12	\$0.00	-\$0.12
			4/30/2002	\$0.00	\$0.00				\$0.00					\$0.00	\$0.12	\$0.00	-\$0.12
			5/31/2002	\$0.00	\$0.00				\$0.00					\$0.00	\$0.12	\$0.00	-\$0.12
			6/30/2002	\$0.00	\$0.00				\$0.00					\$0.00	\$0.12	\$0.00	-\$0.12
			7/31/2002	\$0.00	\$0.00				\$0.00					\$0.00	\$0.12	\$0.00	-\$0.12
			8/31/2002	\$0.00	\$0.00				\$0.00					\$0.00	\$0.12	\$0.00	-\$0.12
			9/30/2002	\$0.00	\$0.00				\$0.00					\$0.00	\$0.12	\$0.00	-\$0.12
			10/31/2002	\$0.00	\$0.00				\$0.00					\$0.00	\$0.12	\$0.00	-\$0.12
			11/30/2002	\$0.00	\$0.00				\$0.00					\$0.00	\$0.12	\$0.00	-\$0.12
			12/31/2002	\$0.00	\$0.00				\$0.00					\$0.00	\$0.12	\$0.00	-\$0.12
			1/31/2003	\$0.00	\$0.00				\$0.00					\$0.00	\$0.12	\$0.00	-\$0.12
			2/28/2003	\$0.00	\$0.00				\$0.00					\$0.00	\$0.12	\$0.00	-\$0.12
			3/31/2003	\$0.00	\$0.00				\$0.00					\$0.00	\$0.12	\$0.00	-\$0.12
			4/30/2003	\$0.00	\$0.00				\$0.00					\$0.00	\$0.12	\$0.00	-\$0.12
5/23/2003		\$203.11	5/31/2003	\$203.11	\$0.00				\$0.00					\$0.00	\$203.23	\$203.11	-\$0.12
			6/30/2003	\$0.00	\$0.03				\$0.00					\$0.03	\$203.26	\$203.14	-\$0.12
			7/31/2003	\$0.00	\$0.02				\$0.00					\$0.02	\$203.28	\$203.16	-\$0.12
			8/31/2003	\$0.00	\$0.00				\$0.00					\$0.00	\$203.28	\$203.16	-\$0.12
			9/30/2003	\$0.00	\$0.00				\$0.00					\$0.00	\$203.28	\$203.16	-\$0.12
			10/31/2003	\$0.00	\$0.01				\$0.00					\$0.01	\$203.29	\$203.17	-\$0.12
			11/30/2003	\$0.00	\$0.01				\$0.00					\$0.01	\$203.30	\$203.18	-\$0.12
12/24/2003		\$26.27	12/31/2003	\$26.27	\$0.01				\$0.00					\$0.01	\$229.58	\$229.46	-\$0.12
			1/31/2004	\$0.00	\$0.02				\$0.00					\$0.02	\$229.60	\$229.48	-\$0.12
			2/28/2004	\$0.00	\$0.01				\$0.00					\$0.01	\$229.61	\$229.49	-\$0.12
			3/31/2004	\$0.00	\$0.01				\$0.00					\$0.01	\$229.62	\$229.50	-\$0.12
			4/30/2004	\$0.00	\$0.02				\$0.00					\$0.02	\$229.64	\$229.52	-\$0.12
			5/31/2004	\$0.00	\$0.02				\$0.00					\$0.02	\$229.66	\$229.54	-\$0.12
6/25/2004		\$28.85	6/30/2004	\$28.85	\$0.03				\$0.00					\$0.03	\$258.54	\$258.42	-\$0.12
			7/31/2004	\$0.00	\$0.05				\$0.00					\$0.05	\$258.59	\$258.47	-\$0.12
			8/31/2004	\$0.00	\$0.10				\$0.00					\$0.10	\$258.69	\$258.57	-\$0.12
			9/30/2004	\$0.00	\$0.13				\$0.00					\$0.13	\$258.82	\$258.70	-\$0.12
			10/31/2004	\$0.00	\$0.15				\$0.00					\$0.15	\$258.97	\$258.85	-\$0.12
			11/30/2004	\$0.00	\$0.20				\$0.00					\$0.20	\$259.17	\$259.05	-\$0.12
12/24/2004		30.58	12/31/2004	\$30.58	\$0.20				\$0.00					\$0.20	\$289.95	\$289.83	-\$0.12
			1/31/2005	\$0.00	\$0.29				\$0.00					\$0.29	\$290.24	\$290.12	-\$0.12
			2/28/2005	\$0.00	\$0.34				\$0.00					\$0.34	\$290.58	\$290.46	-\$0.12

**Exhibit J
Unit U37 Escrow Account Reconciliation
VGOB 98-0421-0651**

CNX Deposit Information			Escrow Bank Data														
Check Date	Check Number	Total	Date	Escrow Royalty Deposits	Income	\$ Mkt Int	CDARS Int	Fees	Distributions	Audit Costs	Corrections	Gain/Loss	Royalty Bonus	Total Int. and Fees	Bank Balance	Running Balance	Difference
			3/31/2005	\$0.00	\$0.33				\$0.00					\$0.33	\$290.91	\$290.79	-\$0.12
4/25/2005		28.21	4/30/2005	\$28.21	\$0.47				\$0.00					\$0.47	\$319.59	\$319.47	-\$0.12
			5/31/2005	\$0.00	\$0.51				\$0.00					\$0.51	\$320.10	\$319.98	-\$0.12
			6/30/2005	\$0.00	\$0.55				\$0.00					\$0.55	\$320.65	\$320.53	-\$0.12
			7/31/2005	\$0.00	\$0.55				\$0.00					\$0.55	\$321.20	\$321.08	-\$0.12
			8/31/2005	\$0.00	\$0.62				\$0.00					\$0.62	\$321.82	\$321.70	-\$0.12
			9/30/2005	\$0.00	\$0.66				\$0.00					\$0.66	\$322.48	\$322.36	-\$0.12
10/25/2005		30	10/31/2005	\$30.00	\$0.75				\$0.00					\$0.75	\$353.23	\$353.11	-\$0.12
			11/30/2005	\$0.00	\$0.77				\$0.00					\$0.77	\$354.00	\$353.88	-\$0.12
12/23/2005		20.62	12/31/2005	\$20.62	\$0.83				\$0.00					\$0.83	\$375.45	\$375.33	-\$0.12
			1/31/2006	\$0.00	\$0.98				\$0.00					\$0.98	\$376.43	\$376.31	-\$0.12
			2/28/2006	\$0.00	\$0.97				\$0.00					\$0.97	\$377.40	\$377.28	-\$0.12
			3/31/2006	\$0.00	\$1.01				\$0.00					\$1.01	\$378.41	\$378.29	-\$0.12
4/25/2006		30.8	4/30/2006	\$30.80	\$1.26				\$0.00					\$1.26	\$410.47	\$410.35	-\$0.12
			5/31/2006	\$0.00	\$1.22				\$0.00					\$1.22	\$411.69	\$411.57	-\$0.12
			6/30/2006	\$0.00	\$1.27				\$0.00					\$1.27	\$412.96	\$412.84	-\$0.12
7/25/2006		12.24	7/31/2006	\$12.24	\$1.31				\$0.00					\$1.31	\$426.51	\$426.39	-\$0.12
			8/31/2006	\$0.00	\$1.43				\$0.00					\$1.43	\$427.94	\$598.47	\$110.53
		\$110.65	10/25/2006	\$108.94	\$1.62				\$0.00					\$1.62	\$431.06	\$649.03	\$217.97
		\$62.39	11/25/2006	\$62.39	\$1.71			(\$0.03)	\$0.00					\$1.68	\$604.07	\$713.10	\$109.03
		\$46.19	12/25/2006	\$46.19	\$2.37			(\$0.32)	\$0.00					\$2.05	\$652.31	\$761.34	\$109.03
		\$33.57	1/25/2007	\$33.57	\$2.38				\$0.00					\$2.38	\$688.26	\$797.29	\$109.03
		\$27.45	1/31/2007	\$27.45	\$2.41				\$0.00					\$2.41	\$690.67	\$827.15	\$136.48
		\$72.54	2/25/2007	\$72.54	\$2.45				\$0.00					\$2.45	\$793.11	\$902.14	\$109.03
		\$49.90	3/25/2007	\$49.90												\$952.04	\$952.04
		\$246.97	4/25/2007	\$246.97	\$2.98				\$0.00					\$2.98	\$1,092.96	\$1,201.99	\$109.03
		\$76.78	5/25/2007	\$76.78	\$3.74				\$0.00					\$3.74	\$1,173.48	\$1,282.51	\$109.03
		\$107.41	6/25/2007	\$107.41	\$4.15				\$0.00					\$4.15	\$1,177.63	\$1,394.07	\$216.44
		\$65.75	7/25/2007	\$65.75	\$8.50				\$0.00					\$8.50	\$1,355.04	\$1,468.32	\$113.28
		\$63.34	8/25/2007	\$63.34	\$4.62				\$0.00					\$4.62	\$1,423.00	\$1,536.28	\$113.28
		\$71.12	9/25/2007	\$71.12	\$7.65				\$0.00						\$1,501.77	\$1,607.40	\$105.63
			10/31/2007	\$0.00	\$5.03				\$0.00					\$5.03	\$1,506.80	\$1,612.43	\$105.63
10/25/2007		\$33.75	11/30/2007	\$33.75	\$5.31				\$0.00					\$5.31	\$1,545.86	\$1,651.49	\$105.63
		\$30.22	12/31/2007	\$30.22	\$4.93				\$0.00					\$4.93	\$1,581.01	\$1,686.64	\$105.63
			1/31/2008	\$0.00	\$3.99				\$0.00					\$3.99	\$1,585.00	\$1,690.63	\$105.63
			2/29/2008	\$0.00	\$3.40				\$0.00					\$3.40	\$1,588.40	\$1,694.03	\$105.63
3/25/2008		\$32.54	3/31/2008	\$32.54	\$2.97				\$0.00					\$2.97	\$1,623.91	\$1,729.54	\$105.63
			4/30/2008	\$0.00	\$2.27				\$0.00						\$1,626.18	\$1,729.54	\$103.36
		\$43.57	5/31/2008	\$43.57	\$1.88				\$0.00					\$1.88	\$1,671.63	\$1,774.99	\$103.36
			6/30/2008	\$0.00	\$1.91				\$0.00					\$1.91	\$1,673.54	\$1,776.90	\$103.36
		\$31.98	7/25/2008	\$31.98	\$1.84				\$0.00					\$1.84	\$1,707.36	\$1,810.72	\$103.36
		\$28.11	8/25/2008	\$28.11	\$2.39				\$0.00					\$2.39	\$1,737.86	\$1,841.22	\$103.36
		\$39.04	9/25/2008	\$39.04	\$2.17				\$0.00					\$2.17	\$1,779.07	\$1,882.43	\$103.36
		\$19.49	10/25/2008	\$19.49	\$1.78				\$0.00					\$1.78	\$1,800.34	\$1,903.70	\$103.36
			11/30/2008	\$0.00	\$2.36				\$0.00					\$2.36	\$1,802.70	\$1,906.06	\$103.36
			12/31/2008	\$0.00	\$0.95				\$0.00					\$0.95	\$1,803.65	\$1,907.01	\$103.36
			1/1/2009	\$0.00	\$0.09				\$0.00					\$0.09	\$1,803.74	\$1,907.10	\$103.36
			2/28/2009	\$0.00	(\$0.16)				\$0.00					(\$0.16)	\$1,803.58	\$1,906.94	\$103.36
			3/31/2009	\$0.00	\$0.44				\$0.00					\$0.44	\$1,804.02	\$1,907.38	\$103.36
			4/30/2009	\$0.00	(\$0.28)				\$0.00					(\$0.28)	\$1,803.74	\$1,907.10	\$103.36
			5/31/2009	\$0.00	(\$0.29)				\$0.00					(\$0.29)	\$1,803.45	\$1,906.81	\$103.36

Exhibit J
Unit U37 Escrow Account Reconciliation
VGOB 98-0421-0651

CNX Deposit Information			Escrow Bank Data														
Check Date	Check Number	Total	Date	Escrow Royalty Deposits	Income	\$ Mkt Int	CDARS Int	Fees	Distributions	Audit Costs	Corrections	Gain/Loss	Royalty Bonus	Total Int. and Fees	Bank Balance	Running Balance	Difference
			6/30/2009	\$0.00	(\$0.29)				\$0.00					(\$0.29)	\$1,803.16	\$1,906.52	\$103.36
			7/31/2009	\$0.00	(\$0.30)				\$0.00					(\$0.30)	\$1,802.86	\$1,906.22	\$103.36
			8/31/2009	\$0.00	(\$0.17)				\$0.00					(\$0.17)	\$1,802.69	\$1,906.05	\$103.36
			9/30/2009	\$0.00	(\$0.12)				\$0.00					(\$0.12)	\$1,802.57	\$1,905.93	\$103.36
			10/31/2009	\$0.00	(\$0.14)				\$0.00					(\$0.14)	\$1,802.43	\$1,905.79	\$103.36
	11/19/2009	\$10.69	11/30/2009	\$10.69	(\$0.13)				\$0.00					(\$0.13)	\$1,812.99	\$1,916.35	\$103.36
			12/31/2009	\$0.00	(\$0.51)				\$0.00					(\$0.51)	\$1,812.48	\$1,915.84	\$103.36
			1/1/2010	\$0.00	\$0.34			\$0.00	\$0.00					\$0.34	\$1,812.28	\$1,916.18	\$103.90
			2/1/2010	\$0.00	\$0.35			(\$0.15)	\$0.00					\$0.20	\$1,812.48	\$1,916.38	\$103.90
			3/1/2010	\$0.00	\$0.38			(\$0.15)	\$0.00					\$0.23	\$1,812.71	\$1,916.61	\$103.90
			4/1/2010	\$0.00	\$0.40			(\$0.15)	\$0.00					\$0.25	\$1,812.96	\$1,916.86	\$103.90
			5/1/2010	\$0.00	\$0.36			(\$0.15)	\$0.00					\$0.21	\$1,813.17	\$1,917.07	\$103.90
			6/1/2010	\$0.00	\$0.37			(\$0.15)	\$0.00	(\$1.58)				(\$1.36)	\$1,811.81	\$1,915.71	\$103.90
			7/1/2010	\$0.00		\$0.37	\$0.05	(\$0.15)	\$0.00					\$0.27	\$1,812.08	\$1,915.98	\$103.90
			8/1/2010	\$0.00		\$0.32	\$0.13	(\$0.15)	\$0.00					\$0.30	\$1,812.38	\$1,916.28	\$103.90
			9/1/2010	\$0.00		\$0.30	\$0.18	(\$0.15)	\$0.00					\$0.33	\$1,812.71	\$1,916.61	\$103.90
			10/1/2010	\$0.00		\$0.27	\$0.25	(\$0.15)	\$0.00	(\$1.96)				(\$1.59)	\$1,811.12	\$1,915.02	\$103.90
			11/1/2010	\$0.00		\$0.23	\$0.32	(\$0.15)	\$0.00					\$0.40	\$1,811.52	\$1,915.42	\$103.90
			12/1/2010	\$0.00		\$0.18	\$0.47	(\$0.15)	\$0.00	(\$1.56)				(\$1.06)	\$1,810.46	\$1,914.36	\$103.90
			1/31/2011	\$0.00		\$0.18	\$0.61	(\$0.17)	\$0.00	(\$0.13)				\$0.49	\$1,810.95	\$1,914.85	\$103.90
			2/28/2011	\$0.00		\$0.12	\$0.62	(\$0.15)	\$0.00	(\$0.48)				\$0.11	\$1,811.06	\$1,914.96	\$103.90
			3/31/2011	\$0.00		\$0.10	\$0.74	(\$0.15)	\$0.00	(\$0.63)				\$0.06	\$1,811.12	\$1,915.02	\$103.90
			4/30/2011	\$0.00		\$0.07	\$0.75	(\$0.15)	\$0.00	(\$0.49)	\$0.00			\$0.18	\$1,811.30	\$1,915.20	\$103.90
			5/31/2011	\$0.00		\$0.07	\$0.79	(\$0.15)	\$0.00	(\$0.36)				\$0.35	\$1,811.65	\$1,915.55	\$103.90
			6/30/2011	\$0.00		\$0.06	\$0.76	(\$0.15)	\$0.00	(\$0.42)				\$0.25	\$1,811.90	\$1,915.80	\$103.90
			7/31/2011	\$0.00		\$0.07	\$0.79	(\$0.15)	\$0.00	(\$0.26)				\$0.45	\$1,812.35	\$1,916.25	\$103.90
			8/30/2011	\$0.00		\$0.46	\$0.00	(\$0.15)	\$0.00	(\$1.16)				(\$0.85)	\$1,811.50	\$1,915.40	\$103.90
			9/30/2011	\$0.00		\$0.60	\$0.00	(\$0.15)	\$0.00	(\$0.36)				\$0.09	\$1,811.59	\$1,915.49	\$103.90
			10/31/2011	\$0.00		\$0.61	\$0.00	(\$0.15)	\$0.00	(\$0.55)				(\$0.09)	\$1,811.50	\$1,915.40	\$103.90
			11/30/2011	\$0.00		\$0.59	\$0.00	(\$0.15)	\$0.00	(\$0.46)				(\$0.02)	\$1,811.48	\$1,915.38	\$103.90
			12/31/2011	\$0.00		\$0.61	\$0.00	(\$0.15)	\$0.00	(\$0.33)				\$0.13	\$1,811.61	\$1,915.51	\$103.90
			1/31/2012	\$0.00		\$0.67	\$0.00	(\$0.15)	\$0.00	(\$0.61)				(\$0.09)	\$1,811.52	\$1,915.42	\$103.90
			2/28/2012			\$0.59	\$0.00	(\$0.15)		(\$0.32)				\$0.12	\$1,811.64	\$1,915.54	\$103.90
			3/31/2012			\$0.63	\$0.00	(\$0.15)		(\$0.26)				\$0.22	\$1,811.86	\$1,915.76	\$103.90
			4/30/2012			\$0.44	\$0.00	(\$0.15)		(\$0.33)				(\$0.04)	\$1,811.82	\$1,915.72	\$103.90
			5/31/2012			\$0.30	\$0.00	(\$0.15)		(\$0.13)				\$0.02	\$1,811.84	\$1,915.74	\$103.90
			6/30/2012			\$0.27	\$0.00	(\$0.15)		(\$0.94)				(\$0.82)	\$1,811.02	\$1,914.92	\$103.90
			7/31/2012			\$0.34	\$0.00	(\$0.15)		(\$0.13)				\$0.06	\$1,811.08	\$1,914.98	\$103.90
			8/31/2012			\$0.31	\$0.00	(\$0.15)		(\$0.67)				(\$0.51)	\$1,810.57	\$1,914.47	\$103.90
			9/30/2012			\$0.30	\$0.00	(\$0.15)		(\$0.18)				(\$0.03)	\$1,810.54	\$1,914.44	\$103.90
			10/31/2012			\$0.30	\$0.00	(\$0.15)		(\$0.22)				(\$0.07)	\$1,810.47	\$1,914.37	\$103.90
			11/30/2012			\$0.32	\$0.00	(\$0.15)		(\$0.18)				(\$0.01)	\$1,810.46	\$1,914.36	\$103.90
			12/31/2012			\$0.30	\$0.00	(\$0.15)		(\$0.21)				(\$0.06)	\$1,810.40	\$1,914.30	\$103.90
			1/31/2013			\$0.30	\$0.00	(\$0.15)		(\$0.16)				(\$0.01)	\$1,810.39	\$1,914.29	\$103.90
			2/28/2013			\$0.27	\$0.00	(\$0.15)		(\$0.28)				(\$0.16)	\$1,810.23	\$1,914.13	\$103.90
			3/31/2013			\$0.30	\$0.00	(\$0.15)		(\$0.18)				(\$0.03)	\$1,810.20	\$1,914.10	\$103.90
			4/30/2013			\$0.29	\$0.00	(\$0.15)						\$0.14	\$1,810.34	\$1,914.24	\$103.90
			5/31/2013			\$0.30	\$0.00	(\$0.15)						\$0.15	\$1,810.49	\$1,914.39	\$103.90
			6/30/2013			\$0.29	\$0.00	(\$0.15)		(\$0.18)				(\$0.04)	\$1,810.45	\$1,914.35	\$103.90
			7/31/2013			\$0.30	\$0.00	(\$0.15)						\$0.15	\$1,810.60	\$1,914.50	\$103.90
			8/31/2013			\$0.32	\$0.00	(\$0.15)						\$0.17	\$1,810.77	\$1,914.67	\$103.90

Exhibit J
Unit U37 Escrow Account Reconciliation
VGOB 98-0421-0651

CNX Deposit Information			Escrow Bank Data														
Check Date	Check Number	Total	Date	Escrow Royalty Deposits	Income	\$ Mkt Int	CDARS Int	Fees	Distributions	Audit Costs	Corrections	Gain L ops	Royalty Bonus	Total Int. and Fees	Bank Balance	Running Balance	Difference
			9/30/2013			\$0.29	\$0.00	(\$0.15)						\$0.14	\$1,810.91	\$1,914.81	\$103.90
			10/31/2013			\$0.29	\$0.00	(\$0.15)						\$0.14	\$1,811.05	\$1,914.95	\$103.90
			11/30/2013			\$0.29	\$0.00	(\$0.15)						\$0.14	\$1,811.19	\$1,915.09	\$103.90
			12/31/2013			\$0.30	\$0.00	(\$0.15)						\$0.15	\$1,811.34	\$1,915.24	\$103.90
			1/31/2014			\$0.31	\$0.00	(\$0.15)						\$0.16	\$1,811.50	\$1,915.40	\$103.90
			2/28/2014			\$0.27	\$0.00	(\$0.15)						\$0.12	\$1,811.62	\$1,915.52	\$103.90
			3/31/2014			\$0.29	\$0.00	(\$0.15)						\$0.14	\$1,811.76	\$1,915.66	\$103.90
			4/30/2014			\$0.29	\$0.00	(\$0.15)						\$0.14	\$1,811.90	\$1,915.80	\$103.90
			5/31/2014			\$0.30	\$0.00	(\$0.15)						\$0.15	\$1,812.05	\$1,915.95	\$103.90
			6/30/2014			\$0.29	\$0.00	(\$0.15)						\$0.14	\$1,812.19	\$1,916.09	\$103.90
			7/31/2014			\$0.30	\$0.00	(\$0.15)						\$0.15	\$1,812.34	\$1,916.24	\$103.90
			8/31/2014			\$0.30		(\$0.15)						\$0.15	\$1,812.49	\$1,916.39	\$103.90
			9/30/2014			\$0.29		(\$0.15)						\$0.14	\$1,812.63	\$1,916.53	\$103.90
			10/31/2014			\$0.30		(\$0.15)						\$0.15	\$1,812.78	\$1,916.68	\$103.90
			11/30/2014			\$0.31		(\$0.15)						\$0.16	\$1,812.94	\$1,916.84	\$103.90
			12/31/2014			\$0.58		(\$0.15)						\$0.43	\$1,813.37	\$1,917.27	\$103.90
			1/31/2015			\$0.45		(\$0.15)						\$0.30	\$1,813.67	\$1,917.57	\$103.90
			2/28/2015			\$0.28		(\$0.15)						\$0.13	\$1,813.80	\$1,917.70	\$103.90
			3/31/2015			\$0.30		(\$0.15)						\$0.15	\$1,813.95	\$1,917.85	\$103.90
			4/30/2015			\$0.30		(\$0.15)						\$0.15	\$1,814.10	\$1,918.00	\$103.90
			5/31/2015			\$0.31		(\$0.15)						\$0.16	\$1,814.26	\$1,918.16	\$103.90
			6/30/2015			\$0.30		(\$0.15)						\$0.15	\$1,814.41	\$1,918.31	\$103.90
			7/31/2015			\$0.31	\$0.00	(\$0.15)						\$0.16	\$1,814.57	\$1,918.47	\$103.90
			8/31/2015			\$0.29		(\$0.15)	\$0.00	\$0.00	\$0.00			\$0.14	\$1,814.71	\$1,918.61	\$103.90
			9/30/2015			\$0.27	\$0.00	(\$0.15)	\$0.00	\$0.00	\$0.00			\$0.12	\$1,814.83	\$1,918.73	\$103.90
			10/31/2015			\$0.29	\$0.00	(\$0.15)	\$0.00	\$0.00	\$0.00			\$0.14	\$1,814.97	\$1,918.87	\$103.90
														Total	\$95.80		

Total Deposited	\$1,823.07
Interest and Fees	\$95.80
Total	\$1,918.87
October 2015 First Bank and Trust balance	
	\$1,814.97
Difference	\$103.90