

BEFORE THE VIRGINIA GAS AND OIL BOARD

PETITIONER: CNX Gas Company LLC

DIVISION OF GAS AND OIL

DOCKET NO: VGOB 93-0316-0342-03

**RELIEF SOUGHT: (1) DISBURSEMENT FROM
ESCROW REGARDING TRACT(S) 2
(2) AND AUTHORIZATION FOR DIRECT
PAYMENT OF ROYALTIES**

HEARING DATE: February 18, 2014

DRILLING UNIT: R42

BUCHANAN COUNTY, VIRGINIA

PETITION FOR ORDER OF DISBURSEMENT OF ESCROW FUNDS

1. Petitioner and its counsel

Petitioner is CNX Gas Company LLC, 2481 John Nash Blvd, Bluefield, WV 24701, (304)323-6500. Petitioner's counsel is Mark A. Swartz, Swartz Law Offices, 601 Sixth Avenue, Suite 201, P.O. Box 1808, St. Albans, WV 25177-1808..

2. Relief Sought

Refund of escrow payments deposited with the Board's Escrow Agent(s), and vacate the Board's Order of August 27, 1993 as all individuals have voluntarily leased.

3. Legal Authority

Va. Code Ann. § 45.1-361.1 et seq., 4 VAC 25-160-140., and relevant Virginia Gas and Oil Board Orders ("Board") heretofore promulgated pursuant to law.

4. Type of Well(s)

Coalbed Methane

5. Factual basis for relief requested

All individuals have entered into a voluntary lease agreement. A pooling order and escrow is no longer required.

6. Attestation

The foregoing Petition to the best of my knowledge, information, and belief is true and correct.

CNX Gas Company LLC

UNIT R 42

Tract Identification

1. Coal Mountain Mining Company L.L.P. Tr. 26 (1355 Acre Tract) - Fee
Reserve Coal Properties Company – Coal Below Drainage Leased
Knox Creek Coal Corporation – Coal Above Drainage Leased
CNX Gas Company LLC – Oil, Gas and CBM Leased
55.44 Acres 69.3000%

2. James M. McGuire Trust – Coal
Reserve Coal Properties – Below Drainage Coal Leased
Jewell Ridge Coal Corp. - Jawbone and Tiller Seams Leased
CNX Gas Company LLC – All Minerals except Coal
Consolidation Coal Company – Surface
0.23 Acres 0.2875%

3. James M. McGuire Trust – Coal
Reserve Coal Properties – Below Drainage Coal Leased
Jewell Ridge Coal Corp. – Jawbone and Tiller Seams Leased
Norfolk & Western Railway Company – Surface and All Minerals except Coal
5.95 Acres 7.4375%

4. James M. McGuire Trust – Coal
Reserve Coal Properties – Below Drainage Coal Leased
Jewell Ridge Coal Corp. - Jawbone and Tiller Seams Leased
CNX Gas Company LLC – All Minerals except Coal
Consolidation Coal Company – Surface
12.72 Acres 15.9000%

5. James M. McGuire Trust – Coal
Reserve Coal Properties – Below Drainage Coal Leased
Jewell Ridge Coal Corp. – Jawbone and Tiller Seams Leased
CNX Gas Company LLC – Surface and All Minerals except Coal
0.01 Acres 0.0125%

6. Norfolk & Western Railway Company – Fee

OR

Coal Mountain Mining Company L.L.P. Tr 26 (1355 Acre Tract) – Fee
Reserve Coal Properties Company – Coal Below Drainage Leased
Knox Creek Coal Corporation – Coal Above Drainage Leased
CNX Gas Company LLC – Oil, Gas and CBM Leased
5.65 Acres 7.0625%

BEARING & DISTANCE TO OTHER
WELLS WITHIN 2,500' OF CBM-R42
CBM-410 S 35°45'50" W 1579.57'
CBM-402 N 38°52'42" W 2203.05'
CBM-408 N 8°12'51" W 1223.02'
CBM-0428 N 34°18'16" E 1842.24'
CBM-043 N 61°17'41" E 2442.47'
CBM-043A N 83°44'40" E 2633.71'
CBM-R45 S 71°4'59" E 1423.9'
CBM-R49A S 23°45'4" E 2514.23'
CBM-R46 S 40°42'57" W 2474.57'
CBM-412 S 51°57'59" W 2454.13'
CBM-R410 S 59°52'6" W 2140.69'
CBM-R41C S 70°53'59" W 1849.32'
CBM-R41D S 81°33'48" W 1733.26'
CBM-0419 N 72°13'34" W 1949.24'
CBM-105 N 10°39'51" W 1931.03'

Property lines shown on this plot were provided by CNX Gas Company LLC
and were taken from deed descriptions and chains of title of record.
This does not represent a current boundary survey.
This certification is as to the size, shape and location of the proposed well;

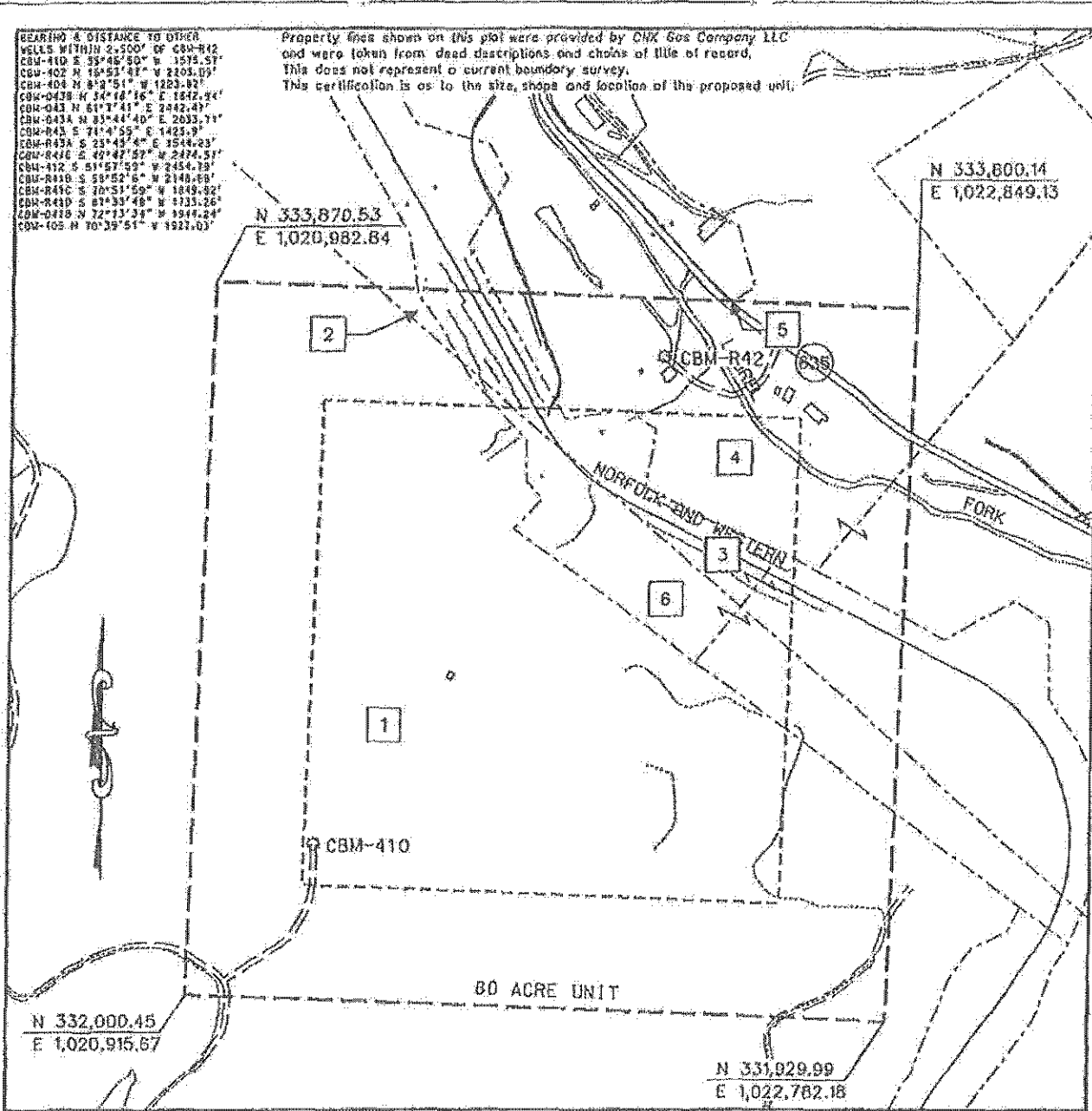


EXHIBIT A
OAKWOOD FIELD
UNIT R42
FORCE POOLING
VG0B-93-0316-0342-02

Company CNX Gas Company LLC Well Name and Number UNIT R42
 Tract No. _____ Elevation _____ Quadrangle WHEEL RIDGE
 County BUCHANAN District GARDEN Scale: 1" = 100'
 This plot is a new plot or an updated plot _____ or _____
 Form DGD-60-7 _____
 Rev. 9/91 _____ Licensed Professional Engineer or Licensed Land Surveyor
 Date 05/13/16
 Signature: Richard C. Murphy
 License No. 041898
 (Affix Seal)

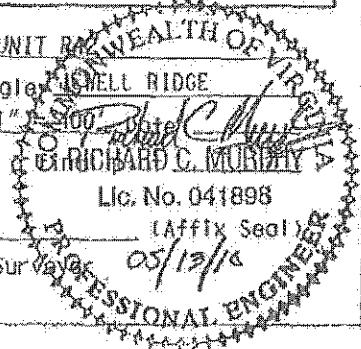


Exhibit E
Unit R-42
Docket #VGOB 93-0316-0342-03
List of Conflicting Owners/Claimants that require suspense

Net Acres in Unit	Interest in Unit	Interest in 16-Right 16.20998%	Interest in 17-Right 16.15837%
----------------------	---------------------	--------------------------------------	--------------------------------------

This unit is now 100% leased and all conflicts will be held internally

Exhibit EE
Unit R-42
Docket #VGOB 93-0316-0342-03
List of Conflicting Owners/Claimants with Royalty Split Agreements

Net Acres in Unit	Interest in Unit	Interest in	
		16-Right	17-Right
		16.20998%	16.15937%

This unit is now 100% leased and all conflicts and agreements will be maintained internally

Exhibit J
Unit R42 Escrow Account Reconciliation
VG0B 93-0316-0342

CNX Deposit Information		Escrow Bank Data													Running Balance	Difference
Check Date	Check Number	Total	Date	Escrow Royalty Deposits	Income	S Wifes Inc	CDARS Int	Fees	Distributions	Corrections	Audit Costs	Outgoing	Royalty Bonus	Total Int and Fees	Bank Balance	
12/25/1993		\$76.93	12/31/1993											\$0.00	\$76.93	\$76.93
1/25/1994		\$114.52	1/31/1994											\$0.00	\$191.45	\$191.45
3/25/1994		\$459.21	2/28/1994											\$0.00	\$650.66	\$650.66
			3/31/1994	\$459.21										\$0.00	\$650.66	\$650.66
			6/30/1994		\$0.11			-\$10.38						\$0.00	\$459.21	\$459.21
7/25/1994		\$1,165.76	7/31/1994	\$1,165.76	\$1.43			-\$0.37						-\$10.27	\$448.94	\$448.94
8/25/1994		\$33.43	8/31/1994	\$33.43	\$2.09			-\$11.35						\$1.06	\$1,615.76	\$1,615.76
9/25/1994		\$37.24	9/30/1994	\$37.24	\$5.76			-\$11.37						-\$9.26	\$1,639.93	\$1,639.93
10/25/1994		\$38.51	10/31/1994	\$38.51	\$5.12			-\$1.39				\$14.73		\$8.46	\$1,685.63	\$1,685.63
11/25/1994		\$33.18	11/30/1994	\$33.18	\$4.41			-\$11.42						\$3.73	\$1,717.87	\$1,717.87
12/25/1994		\$31.56	12/31/1994	\$31.56	\$4.59			-\$11.46						-\$21.74	\$1,729.31	\$1,729.31
1/25/1995		\$52.09	1/31/1995		\$4.20			-\$11.48						-\$6.87	\$1,754.00	\$1,754.00
2/25/1995		\$64.39	2/28/1995	\$52.09	\$4.50			-\$1.46						-\$7.28	\$1,746.72	\$1,746.72
3/25/1995		\$18.19	3/31/1995	\$64.39	\$287.41			-\$11.54						\$3.04	\$1,801.85	\$1,801.85
4/25/1995		\$6.61	4/30/1995		\$5.65			-\$1.59		-\$269.84				\$6.03	\$1,872.27	\$1,872.27
5/25/1995		\$19.04	5/31/1995	\$43.84	\$6.40			-\$1.59						\$4.06	\$1,876.33	\$1,876.33
6/25/1995		\$3.57	6/30/1995		\$6.63			-\$1.59						\$4.81	\$1,924.98	\$1,924.98
7/25/1995		\$19.65	7/31/1995		\$6.56			-\$1.63						-\$5.01	\$1,919.97	\$1,919.97
8/25/1995		\$22.26	8/31/1995	\$38.34	\$6.67			-\$1.63						\$4.93	\$1,924.90	\$1,924.90
9/25/1995		\$5.66	9/30/1995		\$15.08			-\$1.90		-\$2.04				\$5.04	\$1,968.28	\$1,968.28
11/25/1995		\$9.26	10/31/1995	\$5.66	\$5.09			-\$1.32				\$13.93		\$15.07	\$1,983.35	\$1,983.35
12/25/1995		\$7.97	11/30/1995		\$5.33			-\$1.32				-\$0.26		\$3.51	\$1,992.52	\$1,992.52
1/25/1996		\$10.99	12/31/1995		\$5.13			-\$1.66				\$3.69		-\$2.64	\$1,989.88	\$1,989.88
2/25/1996		\$40.33	1/31/1996	\$28.22	\$13.17			-\$1.66				\$4.59		\$8.06	\$1,197.94	\$1,197.94
3/25/1996		\$195.32	2/29/1996	\$40.33	\$5.23			-\$1.67				-\$7.05		\$4.45	\$2,030.61	\$2,030.61
4/25/1996		\$281.32	3/31/1996		\$21.72			-\$1.71						-\$6.48	\$2,064.46	\$2,064.46
5/25/1996		\$189.39	4/30/1996	\$476.64	\$5.35			-\$1.72						\$10.23	\$2,074.69	\$2,074.69
6/25/1996		\$73.55	5/31/1996	\$589.89	\$6.06			-\$1.99						\$3.63	\$2,554.96	\$2,554.96
7/25/1996		\$60.99	6/30/1996	\$73.55	\$7.52			-\$1.99						-\$6.06	\$2,738.29	\$2,738.29
8/25/1996		\$64.48	7/31/1996	\$60.99	\$15.06			-\$1.99		-\$1.05				-\$6.25	\$2,805.59	\$2,805.59
9/25/1996		\$87.61	8/31/1996	\$64.48	\$7.26			-\$1.99						-\$5.14	\$2,871.32	\$2,871.32
10/25/1996		\$48.35	9/30/1996	\$87.61	\$4.19			-\$1.31						\$6.37	\$3,024.64	\$3,024.64
11/25/1996		\$30.04	10/31/1996	\$48.35	\$8.13			-\$1.52						\$3.95	\$3,076.94	\$3,076.94
12/25/1996		\$33.16	11/30/1996		\$13.35			-\$2.56						\$0.79	\$3,077.73	\$3,077.73
1/25/1997		\$93.61	12/31/1996	\$63.20	\$12.96			-\$2.58						\$5.48	\$3,146.41	\$3,146.41
2/25/1997		\$190.46	1/31/1997	\$93.61	\$21.20			-\$2.61						\$15.02	\$3,255.04	\$3,255.04
3/25/1997		\$186.49	2/28/1997	\$76.95	\$15.07			-\$2.69						-\$163.07	\$3,086.36	\$3,086.36
4/25/1997		\$116.63	3/31/1997	\$116.63	\$22.02			-\$2.69						\$184.72	\$3,617.41	\$3,617.41
5/25/1997		\$30.85	4/30/1997	\$30.85	\$14.23			-\$13.02						\$32.96	\$3,747.00	\$3,747.00
6/25/1997		\$38.21	5/31/1997	\$38.21	\$15.28			-\$13.13						\$8.28	\$3,786.13	\$3,786.13
7/25/1997		\$64.49	6/30/1997	\$38.21	\$15.28			-\$13.15						\$4.03	\$3,828.37	\$3,828.37
8/25/1997		\$71.56	7/31/1997	\$64.49	\$24.32			-\$13.19						\$19.44	\$3,912.30	\$3,912.30
9/25/1997		\$60.83	8/31/1997	\$71.56	\$12.81			-\$13.26						-\$0.45	\$3,983.41	\$3,983.41
10/25/1997		\$61.55	9/30/1997	\$60.83	\$21.55			-\$13.31						\$8.24	\$4,052.48	\$4,052.48
			10/31/1997	\$61.55	\$40.58			-\$26.80						\$9.30	\$4,123.33	\$4,123.33

6/25/2002	17961	\$127.14	\$127.14	\$7.18	\$0.00	\$13,270.83	\$13,486.42	\$915.89
7/25/2002	18540	\$125.67	\$125.67	\$6.92	\$0.00	\$13,403.42	\$13,619.01	\$215.58
8/23/2002	19151	\$121.67	\$121.67	\$7.34	\$0.00	\$13,532.43	\$13,748.02	\$215.59
9/25/2002	19487	\$125.17	\$125.17	\$7.17	\$0.00	\$13,664.77	\$13,880.36	\$215.59
10/25/2002	20384	\$309.32	\$309.32	\$6.20	\$0.00	\$13,980.29	\$14,195.88	\$215.59
11/25/2002	21053	\$416.76	\$416.76	\$6.86	\$0.00	\$14,403.91	\$14,619.50	\$215.58
12/24/2002	21507	\$468.80	\$468.80	\$6.88	\$0.00	\$14,879.59	\$15,095.18	\$215.59
1/24/2003	23011	\$566.41	\$566.41	\$3.50	\$0.00	\$15,449.50	\$15,664.99	\$215.49
2/25/2003	23698	\$666.56	\$666.56	\$3.21	-\$547.91	\$15,114.32	\$15,117.18	-\$332.82
3/25/2003	24501	\$92.34	\$92.34	\$0.23	\$0.00	\$15,136.24	\$15,136.24	-\$342.56
4/25/2003	25329	\$83.01	\$83.01	\$0.39	\$0.00	\$15,222.81	\$15,222.81	-\$342.56
5/23/2003	26213	\$92.40	\$92.40	\$0.27	\$0.00	\$15,312.21	\$15,312.21	-\$342.56
6/25/2003	26693	\$86.03	\$86.03	\$0.40	\$0.00	\$15,403.31	\$15,403.31	-\$342.56
7/25/2003	27169	\$93.94	\$93.94	\$0.24	\$0.00	\$15,499.50	\$15,499.50	-\$342.56
8/25/2003	28146	\$93.53	\$93.53	\$0.10	\$0.00	\$15,585.49	\$15,585.49	-\$342.56
9/25/2003	28877	\$88.28	\$88.28	\$0.09	\$0.00	\$15,679.12	\$15,679.12	-\$342.56
10/24/2003	29757	\$84.62	\$84.62	\$0.15	\$0.00	\$15,767.49	\$15,767.49	-\$342.56
11/25/2003	30671	\$61.44	\$61.44	\$0.24	\$0.00	\$15,852.26	\$15,852.26	-\$342.56
12/24/2003	31480	\$75.16	\$75.16	\$0.16	\$0.00	\$15,939.94	\$15,939.94	-\$342.56
1/23/2004	33027	\$77.11	\$77.11	\$0.30	\$0.00	\$16,029.26	\$16,029.26	-\$342.56
2/25/2004	33849	\$81.12	\$81.12	\$0.23	\$0.00	\$16,114.44	\$16,114.44	-\$342.56
3/25/2004	34717	\$97.37	\$97.37	\$0.14	\$0.00	\$16,205.53	\$16,205.53	-\$342.56
4/23/2004	35649	\$88.09	\$88.09	\$0.38	\$0.00	\$16,294.93	\$16,294.93	-\$342.56
5/25/2004	36750	\$96.82	\$96.82	\$0.39	\$0.00	\$16,385.49	\$16,385.49	-\$342.56
6/25/2004	37678	\$87.85	\$87.85	\$0.54	\$0.00	\$16,479.12	\$16,479.12	-\$342.56
7/23/2004	38652	\$79.99	\$79.99	\$0.74	\$0.00	\$16,566.67	\$16,566.67	-\$342.56
8/25/2004	39788	\$79.38	\$79.38	\$1.56	\$0.00	\$16,656.23	\$16,656.23	-\$342.56
9/24/2004	40927	\$89.60	\$89.60	\$1.85	\$0.00	\$16,748.08	\$16,748.08	-\$342.56
10/25/2004	42026	\$93.76	\$93.76	\$2.30	\$0.00	\$16,842.38	\$16,842.38	-\$342.56
11/24/2004	43135	\$82.54	\$82.54	\$3.01	\$0.00	\$16,939.69	\$16,939.69	-\$342.56
12/24/2004	44133	\$91.88	\$91.88	\$3.05	\$0.00	\$17,039.74	\$17,039.74	-\$342.56
1/25/2005	45806	\$91.11	\$91.11	\$4.27	\$0.00	\$17,141.01	\$17,141.01	-\$342.56
2/25/2005	46825	\$101.74	\$101.74	\$4.98	\$0.00	\$17,244.64	\$17,244.64	-\$342.56
3/24/2005	48136	\$88.11	\$88.11	\$4.95	\$0.00	\$17,350.63	\$17,350.63	-\$342.56
4/25/2005	49314	\$76.02	\$76.02	\$6.63	\$0.00	\$17,459.26	\$17,459.26	-\$342.56
5/25/2005	50627	\$90.62	\$90.62	\$7.08	\$0.00	\$17,570.34	\$17,570.34	-\$342.56
6/24/2005	51296	\$74.19	\$74.19	\$7.80	\$0.00	\$17,684.14	\$17,684.14	-\$342.56
7/25/2005	52821	\$83.39	\$83.39	\$8.08	\$0.00	\$17,800.53	\$17,800.53	-\$342.56
8/25/2005	54152	\$66.08	\$66.08	\$9.22	\$0.00	\$17,919.75	\$17,919.75	-\$342.56
9/23/2005	55476	\$63.52	\$63.52	\$10.06	\$0.00	\$18,041.81	\$18,041.81	-\$342.56
10/25/2005	56704	\$87.14	\$87.14	\$10.55	\$0.00	\$18,166.36	\$18,166.36	-\$342.56
11/25/2005	57982	\$114.54	\$114.54	\$11.10	\$0.00	\$18,293.46	\$18,293.46	-\$342.56
12/23/2005	59226	\$134.40	\$134.40	\$12.00	\$0.00	\$18,423.46	\$18,423.46	-\$342.56
1/25/2006	61136	\$104.78	\$104.78	\$13.68	\$0.00	\$18,557.14	\$18,557.14	-\$342.56
2/24/2006	62434	\$129.82	\$129.82	\$14.19	\$0.00	\$18,694.33	\$18,694.33	-\$342.56
3/24/2006	63809	\$137.98	\$137.98	\$14.73	\$0.00	\$18,835.06	\$18,835.06	-\$342.56
4/25/2006	65180	\$100.12	\$100.12	\$17.76	\$0.00	\$18,982.82	\$18,982.82	-\$342.56
5/25/2006	66512	\$92.74	\$92.74	\$17.41	\$0.00	\$19,137.93	\$19,137.93	-\$342.56
6/23/2006	67765	\$90.11	\$90.11	\$18.49	\$0.00	\$19,299.42	\$19,299.42	-\$342.56
7/25/2006	69278	\$84.14	\$84.14	\$18.75	\$0.00	\$19,468.17	\$19,468.17	-\$342.56
8/25/2006	193	\$60.55	\$60.55	\$20.42	\$0.00	\$19,644.69	\$19,644.69	-\$342.56
9/25/2006	1360	\$56.92	\$56.92	\$23.51	\$0.00	\$19,828.21	\$19,828.21	-\$342.56
10/25/2006	2771	\$76.77	\$76.77	\$24.40	\$0.00	\$20,018.98	\$20,018.98	-\$342.56
11/25/2006	4194	\$53.80	\$53.80	\$24.88	-\$0.43	\$20,215.23	\$20,215.23	-\$342.56
12/25/2006	5757	\$30.17	\$30.17	\$24.88	-\$3.41	\$20,423.70	\$20,423.70	-\$342.56

6/30/2002	\$127.14	\$127.14	\$7.18	\$0.00	\$13,270.83	\$13,486.42	\$915.89
7/31/2002	\$125.67	\$125.67	\$6.92	\$0.00	\$13,403.42	\$13,619.01	\$215.58
8/31/2002	\$121.67	\$121.67	\$7.34	\$0.00	\$13,532.43	\$13,748.02	\$215.59
9/30/2002	\$125.17	\$125.17	\$7.17	\$0.00	\$13,664.77	\$13,880.36	\$215.59
10/31/2002	\$309.32	\$309.32	\$6.20	\$0.00	\$13,980.29	\$14,195.88	\$215.59
11/30/2002	\$416.76	\$416.76	\$6.86	\$0.00	\$14,403.91	\$14,619.50	\$215.58
12/31/2002	\$468.80	\$468.80	\$6.88	\$0.00	\$14,879.59	\$15,095.18	\$215.59
1/31/2003	\$566.41	\$566.41	\$3.50	-\$547.91	\$15,449.50	\$15,117.18	-\$332.82
2/28/2003	\$666.56	\$666.56	\$3.21	\$0.00	\$15,136.24	\$15,136.24	-\$342.56
3/31/2003	\$92.34	\$92.34	\$0.23	\$0.00	\$15,222.81	\$15,222.81	-\$342.56
4/30/2003	\$83.01	\$83.01	\$0.39	\$0.00	\$15,312.21	\$15,312.21	-\$342.56
5/31/2003	\$92.40	\$92.40	\$0.27	\$0.00	\$15,403.31	\$15,403.31	-\$342.56
6/30/2003	\$86.03	\$86.03	\$0.40	\$0.00	\$15,499.50	\$15,499.50	-\$342.56
7/31/2003	\$93.94	\$93.94	\$0.24	\$0.00	\$15,585.49	\$15,585.49	-\$342.56
8/31/2003	\$93.53	\$93.53	\$0.10	\$0.00	\$15,679.12	\$15,679.12	-\$342.56
9/30/2003	\$88.28	\$88.28	\$0.09	\$0.00	\$15,767.49	\$15,767.49	-\$342.56
10/31/2003	\$84.62	\$84.62	\$0.15	\$0.00	\$15,852.26	\$15,852.26	-\$342.56
11/30/2003	\$61.44	\$61.44	\$0.24	\$0.00	\$15,939.94	\$15,939.94	-\$342.56
12/31/2003	\$75.16	\$75.16	\$0.16	\$0.00	\$16,029.26	\$16,029.26	-\$342.56
1/31/2004	\$77.11	\$77.11	\$0.30	\$0.00	\$16,114.44	\$16,114.44	-\$342.56
2/28/2004	\$81.12	\$81.12	\$0.23	\$0.00	\$16,205.53	\$16,205.53	-\$342.56
3/31/2004	\$97.37	\$97.37	\$0.14	\$0.00	\$16,294.93	\$16,294.93	-\$342.56
4/30/2004	\$88.09	\$88.09	\$0.38	\$0.00	\$16,385.49	\$16,385.49	-\$342.56
5/31/2004	\$96.82	\$96.82	\$0.39	\$0.00	\$16,479.12	\$16,479.12	-\$342.56
6/30/2004	\$87.85	\$87.85	\$0.54	\$0.00	\$16,566.67	\$16,566.67	-\$342.56
7/31/2004	\$79.99	\$79.99	\$0.74	\$0.00	\$16,656.23	\$16,656.23	-\$342.56
8/31/2004	\$79.38	\$79.38	\$1.56	\$0.00	\$16,748.08	\$16,748.08	-\$342.56
9/30/2004	\$89.60	\$89.60	\$1.85	\$0.00	\$16,842.38	\$16,842.38	-\$342.56
10/31/2004	\$93.76	\$93.76	\$2.30	\$0.00	\$16,939.69	\$16,939.69	-\$342.56
11/30/2004	\$82.54	\$82.54	\$3.01	\$0.00	\$17,039.74	\$17,039.74	-\$342.56
12/31/2004	\$91.88	\$91.88	\$3.05	\$0.00	\$17,141.01	\$17,141.01	-\$342.56
1/31/2005	\$91.11	\$91.11	\$4.27	\$0.00	\$17,244.64	\$17,244.64	-\$342.56
2/28/2005	\$101.74	\$101.74	\$4.98	\$0.00	\$17,350.63	\$17,350.63	-\$342.56
3/31/2005	\$88.11	\$88.11	\$4.95	\$0.00	\$17,459.26	\$17,459.26	-\$342.56
4/30/2005	\$76.02	\$76.02	\$6.63	\$0.00	\$17,570.34	\$17,570.34	-\$342.56
5/31/2005	\$90.62	\$90.62	\$7.08	\$0.00	\$17,684.14	\$17,684.14	-\$342.56
6/30/2005	\$74.19	\$74.19	\$7.80	\$0.00	\$17,800.53	\$17,800.53	-\$342.56
7/31/2005	\$83.39	\$83.39	\$8.08	\$0.00	\$17,919.75	\$17,919.75	-\$342.56
8/31/2005	\$66.08	\$66.08	\$9.22	\$0.00	\$18,041.81	\$18,041.81	-\$342.56
9/30/2005	\$63.52	\$63.52	\$10.06	\$0.00	\$18,166.36	\$18,166.36	-\$342.56
10/31/2005	\$87.14	\$87.14	\$10.55	\$0.00	\$18,293.46	\$18,293.46	-\$342.56
11/30/2005	\$114.54	\$114.54	\$11.10	\$0.00	\$18,423.46	\$18,423.46	-\$342.56
12/31/2005	\$134.40	\$134.40	\$12.00	\$0.00	\$18,557.14	\$18,557.14	-\$342.56
1/31/2006	\$104.78	\$104.78	\$13.68	\$0.00	\$18,694.33	\$18,694.33	-\$342.56
2/28/2006	\$129.82	\$129.82	\$14.19	\$0.00	\$18,835.06	\$18,835.06	-\$342.56
3/31/2006	\$137.98	\$137.98	\$14.73	\$0.00	\$18,982.82	\$18,982.82	-\$342.56
4/30/2006	\$100.12	\$100.12	\$17.76	\$0.00	\$19,137.93	\$19,137.93	-\$342.56
5/31/2006	\$92.74	\$92.74	\$17.41	\$0.00	\$19,299.42	\$19,299.42	-\$342.56
6/30/2006	\$90.11	\$90.11	\$18.49	\$0.00	\$19,468.17	\$19,468.17	-\$342.56
7/31/2006	\$84.14	\$84.14	\$18.75	\$0.00	\$19,644.69	\$19,644.69	-\$342.56
8/31/2006	\$60.55	\$60.55	\$20.42	\$0.00	\$19,828.21	\$19,828.21	-\$342.56
9/31/2006	\$56.92	\$56.92	\$23.51	\$0.00	\$20,018.98	\$20,018.98	-\$342.56
10/31/2006	\$76.77	\$76.77	\$24.40	\$0.00	\$20,215.23	\$20,215.23	-\$342.56
11/30/2006	\$53.80	\$53.80	\$24.88	-\$0.43	\$20,423.70	\$20,423.70	-\$342.56
12/31/2006	\$30.17	\$30.17	\$24.88	-\$3.41	\$20,644.92	\$20,644.92	-\$342.56

7/19/2011	1134	\$4,354.73
8/19/2011	1284	\$3,936.63
9/19/2011	4395	\$4,924.81
10/19/2011	7043	\$4,665.77
11/19/2011	9040	\$3,039.21
12/19/2011	10608	\$4,167.56
1/19/2012	12164	\$3,247.29
2/20/2012	13922	\$3,613.05
3/20/2012	15473	\$3,183.88
4/20/2012	17100	\$2,220.59
5/21/2012	18653	\$1,123.07
6/20/2012	19773	\$588.91
7/20/2012	24097	\$894.30
8/23/2012	0214000263	\$502.12
9/26/2012	0214001914	\$494.87
10/22/2012	0214005617	\$512.69
11/20/2012	0214011250	\$367.22
12/19/2012	0214016511	\$472.37
1/22/2013	0214021749	\$530.22
2/20/2013	E000003905	\$491.50
3/20/2013	E000005015	\$406.07
4/22/2013	E000006094	\$349.18
5/21/2013	E000007278	\$417.75
6/20/2013	E000008595	\$463.20
7/22/2013	E000009994	\$449.02
8/20/2013	E000011340	\$485.82
9/20/2013	E000012646	\$326.80
10/21/2013	E000013858	\$262.60
11/20/2013	E000016946	\$293.34
12/18/2013	E000018316	\$284.99

7/31/2011	\$4,354.73	\$2.24	\$10.10	-\$2.22	\$0.00	-\$3.94	\$6.18	\$31,041.15	\$30,704.03	-\$337.12
8/30/2011	\$3,936.63	\$2.12	\$13.28	-\$2.91	\$0.00	-\$13.42	-\$0.61	\$34,977.17	\$34,640.05	-\$337.12
9/30/2011	\$4,924.81	\$2.73	\$12.96	-\$2.91	\$0.00	-\$6.92	\$5.86	\$39,907.84	\$39,570.72	-\$337.12
10/31/2011	\$4,665.77	\$3.66	\$14.67	-\$3.33	\$0.00	-\$12.51	\$2.49	\$44,576.10	\$44,238.98	-\$337.12
11/30/2011	\$3,039.21	\$4.71	\$14.38	-\$3.71	\$0.00	-\$11.62	\$3.77	\$47,619.08	\$47,281.96	-\$337.12
12/31/2011	\$4,167.56	\$6.06	\$15.21	-\$3.97	\$0.00	-\$8.61	\$8.69	\$51,795.33	\$51,458.21	-\$337.12
1/31/2012	\$3,247.29	\$7.89	\$17.09	-\$4.32	\$0.00	-\$17.84	\$2.82	\$55,044.44	\$54,708.32	-\$337.12
2/28/2012	\$3,613.05	\$6.88	\$15.98	-\$4.59	\$0.00	-\$9.68	\$8.59	\$58,667.08	\$58,329.96	-\$337.12
3/31/2012	\$3,183.88	\$8.46	\$17.07	-\$4.89	\$0.00	-\$6.36	\$12.28	\$61,853.24	\$61,516.12	-\$337.12
4/30/2012	\$2,220.59	\$1.89	\$26.26	-\$5.16	\$0.00	-\$11.00	\$11.99	\$64,095.82	\$63,758.70	-\$337.12
5/31/2012	\$1,123.07	\$1.34	\$27.23	-\$5.34	\$0.00	-\$4.57	\$18.66	\$65,237.55	\$64,900.43	-\$337.12
6/30/2012	\$588.91	\$1.29	\$27.12	-\$5.44	\$0.00	-\$8.71	\$14.26	\$65,840.72	\$65,503.60	-\$337.12
7/31/2012	\$894.30	\$1.62	\$26.17	-\$5.49	\$0.00	-\$4.83	\$17.47	\$65,858.19	\$65,521.37	-\$337.12
8/31/2012	\$1,396.47	\$1.38	\$22.26	-\$5.60	\$0.00	-\$24.59	-\$4.34	\$67,250.32	\$66,913.20	-\$337.12
9/30/2012	\$494.87	\$1.47	\$22.23	-\$5.61	\$0.00	-\$6.65	\$9.73	\$67,261.71	\$67,019.46	-\$242.25
10/31/2012	\$1,007.56	\$1.61	\$19.91	-\$5.69	\$0.00	-\$6.74	\$9.09	\$68,655.31	\$68,318.19	-\$337.12
11/30/2012	\$367.22	\$1.61	\$17.64	-\$5.72	\$0.00	-\$8.06	\$5.47	\$69,133.15	\$68,796.03	-\$337.12
12/31/2012	\$472.37	\$1.67	\$15.59	-\$5.76	\$0.00	-\$8.18	\$5.32	\$69,668.69	\$69,331.57	-\$337.12
1/31/2013	\$530.22	\$1.63	\$15.36	-\$5.81	\$0.00	-\$10.86	-\$0.83	\$70,159.36	\$69,822.24	-\$337.12
2/28/2013	\$491.50	\$1.46	\$14.38	-\$5.85	\$0.00	-\$6.96	\$4.12	\$70,569.55	\$70,232.43	-\$337.12
3/31/2013	\$406.07	\$1.34	\$14.92	-\$5.88	\$0.00	-\$10.38	\$10.38	\$70,929.11	\$70,591.99	-\$337.12
4/30/2013	\$349.18	\$1.32	\$15.39	-\$5.91	\$0.00	-\$10.80	\$10.80	\$71,357.66	\$71,020.54	-\$337.12
5/31/2013	\$417.75	\$1.36	\$14.89	-\$5.95	\$0.00	-\$7.09	\$3.21	\$71,824.07	\$71,486.95	-\$337.12
6/30/2013	\$463.20	\$1.47	\$15.46	-\$5.99	\$0.00	-\$10.94	\$10.94	\$72,304.03	\$71,966.91	-\$337.12
7/31/2013	\$449.02	\$1.23	\$16.11	-\$6.03	\$0.00	-\$11.31	\$11.31	\$72,760.36	\$72,423.24	-\$337.12
8/31/2013	\$326.80	\$1.16	\$15.60	-\$6.06	\$0.00	-\$10.70	\$10.70	\$73,097.86	\$72,760.74	-\$337.12
9/30/2013	\$262.60	\$1.23	\$16.10	-\$6.09	\$0.00	-\$11.26	\$11.26	\$73,371.72	\$73,034.60	-\$337.12
10/31/2013	\$293.34	\$1.27	\$15.18	-\$6.11	\$0.00	-\$10.34	\$10.34	\$73,675.40	\$73,338.28	-\$337.12
11/30/2013	\$284.99	\$1.21	\$16.59	-\$6.14	\$0.00	-\$11.66	\$11.66	\$73,972.05	\$73,634.93	-\$337.12
12/31/2013										
Total								\$2,075.17	\$73,634.93	-\$337.12

Total Deposited \$86,100.94
 01 Disbursement -\$14,541.18
 Interest and Fees \$2,075.17
 Total \$73,634.93
 December 2013 First Bank and Trust Balance \$73,972.05

Difference -437.12

Exhibit B-2
Unit R-42
Docket #VGOB 93-0316-0342-03
List of Respondents to be Dismissed

	Net Acres in Unit	Interest in Unit	Interest in		Reason for Dismissal
			16-Right	17-Right	
			16.20898%	16.15837%	

I. COAL OWNERSHIP

Tract #6 - 5.65 acres

(1) Norfolk Southern Railway Company	5.65 acres	7.0625%	1.14483%	1.14118%	Leased
--------------------------------------	------------	---------	----------	----------	--------

If no conflict royalties paid to:
Pocahontas Land Corporation
Treasurer, Pocahontas Land Corporation
P. O. Box 1517
Bluefield, WV 24701

II. OIL & GAS OWNERSHIP

Tract #3- 5.95 acres

(1) Norfolk Southern Railway Company	5.95 acres	7.4375%	1.20562%	1.20178%	Leased
--------------------------------------	------------	---------	----------	----------	--------

If no conflict royalties paid to:
Pocahontas Land Corporation
Treasurer, Pocahontas Land Corporation
P. O. Box 1517
Bluefield, WV 24701

Tract #6 - 5.65 acres

(1) Norfolk Southern Railway Company	5.65 acres	7.0625%	1.14483%	1.14118%	Leased
--------------------------------------	------------	---------	----------	----------	--------

If no conflict royalties paid to:
Pocahontas Land Corporation
Treasurer, Pocahontas Land Corporation
P. O. Box 1517
Bluefield, WV 24701

Exhibit B-3
Unit R-42
Docket #VGOB 93-0316-0342-03
List of Unleased Owners/Claimants

	Net Acres in Unit	Interest in Unit	Interest in	
			16-Right	17-Right
			16.20988%	16.15837%

Unit is 100% leased