

BEFORE THE VIRGINIA GAS AND OIL BOARD

PETITIONER: EQT Production Company

DIVISION OF GAS AND OIL

DOCKET NO: VGOB 04-1116-1362-01

**RELIEF SOUGHT: (1) DISBURSEMENT FROM
ESCROW REGARDING TRACT(S) 6
(2) AND AUTHORIZATION FOR DIRECT
PAYMENT OF ROYALTIES**

HEARING DATE: April 16, 2013

DRILLING UNIT: V-502726

WISE COUNTY, VIRGINIA

PETITION FOR ORDER OF DISBURSEMENT OF ESCROW FUNDS

1. Petitioner and its counsel

Petitioner is EQT Production Company, 225 North Shore Drive, Pittsburgh, PA 15212, (412)553-5700. Petitioner's counsel is James Kaiser, Wilhoit and Kaiser Law Firm, 220 Broad Street, Suite 210, Kingsport, TN 37660 .

2. Relief Sought

Petition for disbursement of funds on behalf of the heirs of Viola E Carter for Tract 6 of Well V-502726, VGOB 04/11/16-1362.

3. Legal Authority

Va. Code Ann. § 45.1-361.1 et seq., 4 VAC 25-160-140., and relevant Virginia Gas and Oil Board Orders ("Board") heretofore promulgated pursuant to law.

4. Type of Well(s)

Conventional

5. Factual basis for relief requested

Applicants were listed as "Unknown Heirs of Viola Carter" with regards to Tract 6 as created by Board Order VGOB 04/11/16-1362. Applicants have provided a death certificate and recorded Last Will and Testament for Viola Carter. The heirs identified as Joshua James Carter, Shannon Merrill, and David Ballard Carter are the owners of the gas estate in Tract 6.

6. Attestation

The foregoing Petition to the best of my knowledge, information, and belief is true and correct.

V-4756

10,700'

ORIG

S 5-37 W

0.80'

FINAL

1250'R

-2344*

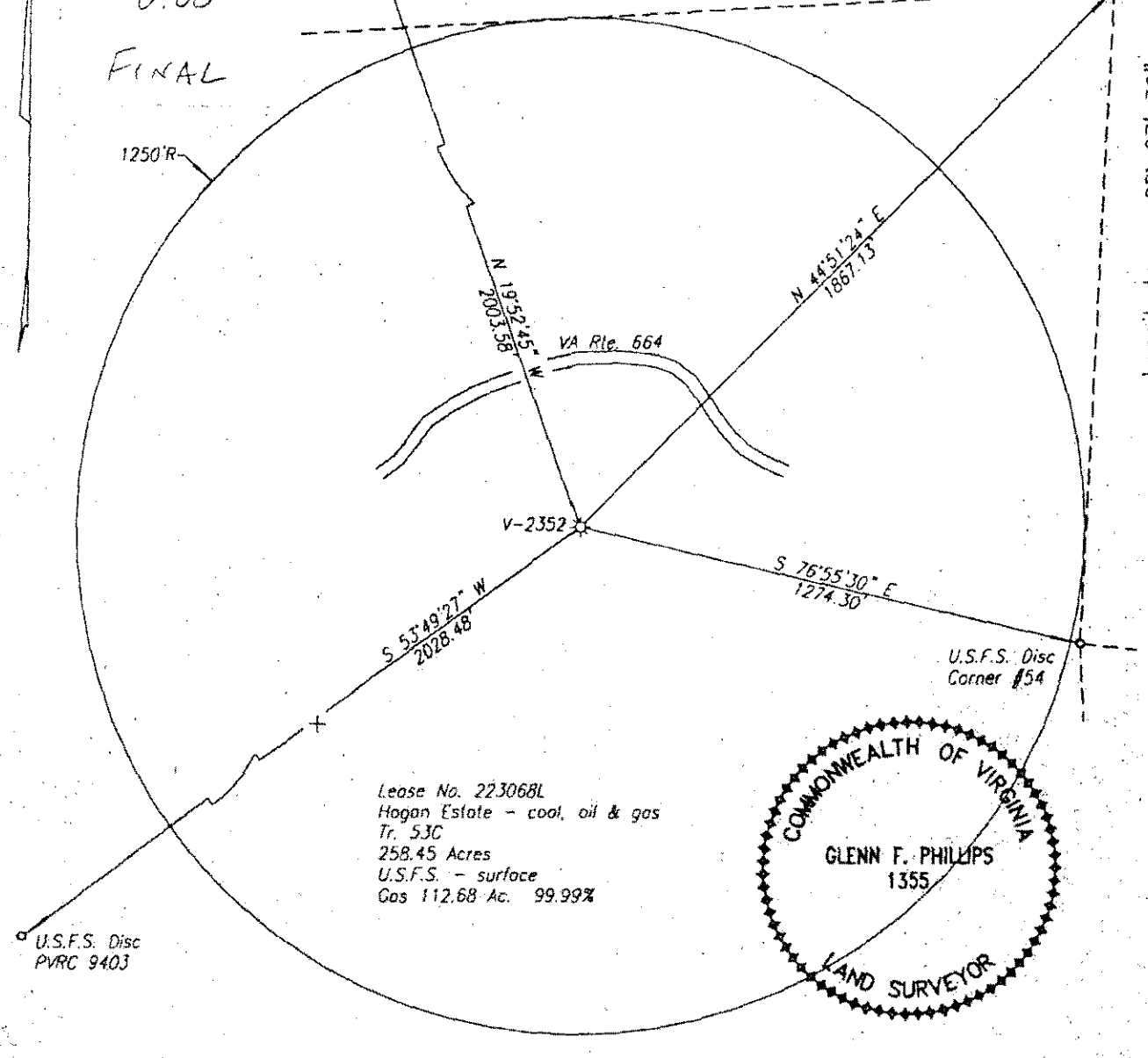
Lease No. 223096L / Tr. 1603
PVRC - coal, oil & gas
121.00 Acres
Gas 0.01 Ac. 0.01%

Latitude 36° 55' 00"

U.S.F.S. Disc
PVRC 12333

Longitude 82° 27' 30"

10,400'



V-2352

VA Rte. 664

S 76° 55' 30" E
1274.30

S 55° 49' 27" W
2028.48

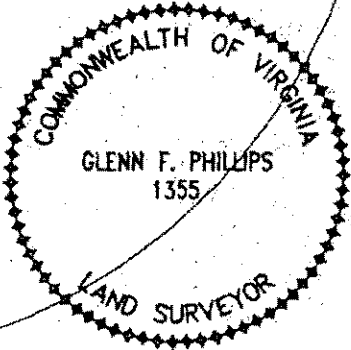
N 19° 52' 45" W
2003.38

N 44° 51' 24" E
1887.73

U.S.F.S. Disc
Corner #54

U.S.F.S. Disc
PVRC 9403

Lease No. 223068L
Hogan Estate - coal, oil & gas
Tr. 53C
258.45 Acres
U.S.F.S. - surface
Gas 112.68 Ac. 99.99%



FINAL PLAT

Well elevation determined by trigonometric leveling from PVRC sta. 12337

Area of Unit = 112.69 Ac.

Well Coordinates: (Va. St. Plane S. Zone)
N 226,663 E 831,950

Well Coordinates: (PVRC)
N 21,309.31 E 139,365.92

WELL LOCATION PLAT

COMPANY Equitable Resources Energy Company WELL NAME AND NUMBER V-2352
 TRACT NO. 53C ELEVATION 2520.86 QUADRANGLE Coeburn
 COUNTY Wise DISTRICT Lipps SCALE 1" = 400' DATE 4-21-1998

This Plat is a new plat ; on updated plat ; or a final location plat

+ Denotes the location of a well on United States topographic Maps, scale 1 to 24,000, latitude and longitude lines being represented by border lines as shown.

Glenn F. Phillips

Licensed Professional Engineer or Licensed Land Surveyor

Form DGO-GO-7

EXHIBIT "B"
V-502726

<u>TRACT</u>	<u>LESSOR</u>	<u>LEASE STATUS</u>	<u>INTEREST WITHIN UNIT</u>	<u>GROSS ACREAGE IN UNIT</u>
<u>Gas Estate Only</u>				
1 ID 6894	Marvin Greear Lois Greear h/w 541 Rogers Avenue Kingsport, TN 37660	Leased 905657	16.49000000%	18.5800
2 ID 6785	R & B Enterprises, Inc. P.O. Box 1526 Coeburn, VA 24230	Leased 905681	13.98000000%	15.7600
3 ID 8001	Gordon P. Nelson Molly Nelson h/w 3001 Caffia Way West Palm Beach, FL 33409	Leased 905727	4.25995700%	4.8000
	David C. Nelson, single 1952 Hartford Court West Palm Beach, FL 33409-7523	Leased 905727	4.25995700%	4.8000
	W. Timothy Nelson, single 1711 17th Avenue North Lakeworth, FL 33460-6429	Leased 905727	4.25995700%	4.8000
4 MINERAL ONLY	Robert S. Sherrard Jr Marie Sherrard h/w 930 Ridgemont Road Charleston, WV 25314	Leased 905090	10.39510900%	11.7149
	James B. Scott Elaine C. Scott h/w P.O. Box 308 Dungannon, VA 24245	Leased 905090	3.46500700%	3.9050
	Elizabeth Hagan Scott C/O James B. Scott Agent and Attorney - in - Fact P.O. Box 308 Dungannon, VA 24245	Leased 905090	3.46498600%	3.9050

EXHIBIT "B"
V-502726

<u>TRACT</u>	<u>LESSOR</u>	<u>LEASE STATUS</u>	<u>INTEREST WITHIN UNIT</u>	<u>GROSS ACREAGE IN UNIT</u>
	Laura Stephens C/O John Patrick Hagan Agent and Attorney - in - Fact P.O. Box 1664 Lebanon, VA 24266	Leased 223280	1.15500900%	1.3017
	Brian Hagan C/O John Patrick Hagan Agent and Attorney - in - Fact P.O. Box 1664 Lebanon, VA 24266	Leased 223280	1.15500900%	1.3017
	SWRR Properties Inc. 112 Laurel Street Weber City, VA 24290	Leased 223280	1.15500900%	1.3017
5 ID 6894	Ralph Greear, single 1614 Lynn Garden Drive Kingsport, TN 37665	Leased 905665	9.02000000%	10.1700
6 MINERAL ONLY	Unknown Heirs of Viola E. Carter	Unleased	26.19000000%	29.5100
7 ID 6445	Hugh P. Cline 312 Northwest Henry Street Norton, VA 24273-1413	Leased 223061	0.37500000%	0.4200
	Carl E. McAfee Julia A. McAfee P.O. Box 656 Norton, VA 24273-0656	Leased 223061	0.37500000%	0.4200
TOTAL GAS ESTATE			100.00000000%	112.6900
Percentage of Unit Leased			73.81000000%	
Percentage of Unit Unleased			26.19000000%	
Acreage in Unit Leased				83.1800
Acreage in Unit Unleased				29.5100

EXHIBIT "E"

V-502726

Revised 03/18/2013

<u>TRACT</u>	<u>LESSOR</u>	<u>LEASE</u> <u>STATUS</u>	<u>INTEREST</u> <u>WITHIN</u> <u>UNIT</u>	<u>GROSS</u> <u>ACREAGE</u> <u>IN UNIT</u>
--------------	---------------	-------------------------------	---	--

Gas Estate Only

Exhibit E no longer required as all owners have been located.

EXHIBIT "EE"
V-502726
 Created 03/18/2013

<u>TRACT</u>	<u>LESSOR</u>	<u>LEASE STATUS</u>	<u>INTEREST WITHIN UNIT</u>	<u>GROSS ACREAGE IN UNIT</u>
<u>Gas Estate Only</u>				
6 MINERAL ONLY	Joshua James Carter* 9 Leedom Road Elkton ,MD 21921-6504	Unleased	8.730000%	9.8367
	Shannon Merrill* 19 First Ave Pemberton, NJ 08068-1914	Unleased	8.730000%	9.8367
	David Ballard Carter* 325 Old Bayview Road North East, MD 21901-1801	Unleased	8.730000%	9.8366
	Total Gas Estate		26.190000%	29.5100

*Per Last Will and Testament of Viola Carter recorded in Wise County, VA on 1/11/2013

Prod Date	Pmt Date	Own Net
05/2006	11/19/2009	1.75
05/2006	11/19/2009	1,274.38
06/2006	11/19/2009	0.02
06/2006	11/19/2009	0.61
06/2006	11/19/2009	518.36
07/2006	11/19/2009	0.41
07/2006	11/19/2009	396.75
08/2006	11/19/2009	0.40
08/2006	11/19/2009	362.85
09/2006	11/19/2009	0.46
09/2006	11/19/2009	351.63
10/2006	11/19/2009	0.01
10/2006	11/19/2009	0.67
10/2006	11/19/2009	229.56
11/2006	11/19/2009	0.03
11/2006	11/19/2009	1.19
11/2006	11/19/2009	256.99
12/2006	11/19/2009	0.00
12/2006	11/19/2009	0.05
12/2006	11/19/2009	1.69
12/2006	11/19/2009	295.16
01/2007	11/19/2009	0.41
01/2007	11/19/2009	172.82
01/2007	11/19/2009	0.13
01/2007	11/19/2009	1.16
02/2007	11/19/2009	1.07
02/2007	11/19/2009	0.25
02/2007	11/19/2009	1.75
02/2007	11/19/2009	219.02
03/2007	11/19/2009	0.09
03/2007	11/19/2009	230.14
03/2007	11/19/2009	0.26
03/2007	11/19/2009	0.81
04/2007	11/19/2009	0.00
04/2007	11/19/2009	198.52
04/2007	11/19/2009	0.26
04/2007	11/19/2009	0.60
04/2007	03/13/2013	192.48
05/2007	11/19/2009	0.26
05/2007	11/19/2009	0.30
05/2007	11/19/2009	2.12
05/2007	11/19/2009	198.24
06/2007	11/19/2009	0.24
06/2007	11/19/2009	0.23
06/2007	11/19/2009	185.57
07/2007	11/19/2009	0.20
07/2007	11/19/2009	0.17
07/2007	11/19/2009	157.22
07/2007	02/10/2012	-157.22
07/2007	02/10/2012	-0.20
07/2007	02/10/2012	-0.17
07/2007	11/19/2009	0.03
07/2007	11/19/2009	0.17

07/2007	11/19/2009	25.14
07/2007	11/19/2009	157.22
08/2007	11/19/2009	0.01
08/2007	11/19/2009	0.14
08/2007	11/19/2009	133.74
08/2007	02/10/2012	-0.01
08/2007	02/10/2012	-0.14
08/2007	02/10/2012	-133.74
08/2007	11/19/2009	0.00
08/2007	11/19/2009	0.01
08/2007	11/19/2009	0.02
08/2007	11/19/2009	0.14
08/2007	11/19/2009	21.39
08/2007	11/19/2009	133.74
09/2007	11/19/2009	0.00
09/2007	11/19/2009	0.00
09/2007	11/19/2009	0.02
09/2007	11/19/2009	0.13
09/2007	11/19/2009	16.59
09/2007	11/19/2009	103.71
10/2007	11/19/2009	0.00
10/2007	11/19/2009	0.00
10/2007	11/19/2009	0.03
10/2007	11/19/2009	0.20
10/2007	11/19/2009	15.81
10/2007	11/19/2009	98.86
11/2007	11/19/2009	0.00
11/2007	11/19/2009	0.00
11/2007	11/19/2009	0.00
11/2007	11/19/2009	0.02
11/2007	11/19/2009	0.12
11/2007	11/19/2009	0.74
11/2007	11/19/2009	21.89
11/2007	11/19/2009	136.90
12/2007	11/19/2009	0.00
12/2007	11/19/2009	0.00
12/2007	11/19/2009	0.14
12/2007	11/19/2009	0.82
12/2007	11/19/2009	2.67
12/2007	11/19/2009	16.69
12/2007	11/19/2009	17.94
12/2007	11/19/2009	112.13
01/2008	11/19/2009	0.09
01/2008	11/19/2009	0.53
01/2008	11/19/2009	0.01
01/2008	11/19/2009	0.04
01/2008	11/19/2009	0.19
01/2008	11/19/2009	1.18
01/2008	11/19/2009	0.10
01/2008	11/19/2009	0.61
01/2008	11/19/2009	16.14
01/2008	11/19/2009	100.92
01/2008	11/19/2009	5.83
01/2008	11/19/2009	36.43

02/2008	11/19/2009	0.06
02/2008	11/19/2009	0.39
02/2008	11/19/2009	0.00
02/2008	11/19/2009	0.02
02/2008	11/19/2009	0.12
02/2008	11/19/2009	0.72
02/2008	11/19/2009	2.36
02/2008	11/19/2009	14.71
02/2008	11/19/2009	4.25
02/2008	11/19/2009	26.54
02/2008	11/19/2009	11.14
02/2008	11/19/2009	69.65
03/2008	11/19/2009	0.04
03/2008	11/19/2009	0.26
03/2008	11/19/2009	0.00
03/2008	11/19/2009	0.01
03/2008	11/19/2009	0.11
03/2008	11/19/2009	0.64
03/2008	11/19/2009	0.00
03/2008	11/19/2009	0.00
03/2008	11/19/2009	22.45
03/2008	11/19/2009	140.36
04/2008	11/19/2009	0.00
04/2008	11/19/2009	0.01
04/2008	11/19/2009	0.06
04/2008	11/19/2009	0.36
04/2008	11/19/2009	25.74
04/2008	11/19/2009	161.00
05/2008	11/19/2009	0.00
05/2008	11/19/2009	0.00
05/2008	11/19/2009	0.06
05/2008	11/19/2009	0.35
05/2008	11/19/2009	0.00
05/2008	11/19/2009	0.00
05/2008	11/19/2009	35.22
05/2008	11/19/2009	220.24
06/2008	11/19/2009	0.00
06/2008	11/19/2009	0.01
06/2008	11/19/2009	0.04
06/2008	11/19/2009	0.26
06/2008	11/19/2009	31.77
06/2008	11/19/2009	198.65
06/2008	11/19/2009	4.72
06/2008	11/19/2009	29.55
07/2008	11/19/2009	0.04
07/2008	11/19/2009	0.27
07/2008	11/19/2009	36.98
07/2008	11/19/2009	231.25
07/2008	11/19/2009	0.53
07/2008	11/19/2009	3.35
08/2008	11/19/2009	0.03
08/2008	11/19/2009	0.18
08/2008	11/19/2009	18.82
08/2008	11/19/2009	117.66

08/2008	11/19/2009	6.92
08/2008	11/19/2009	43.22
09/2008	11/19/2009	0.02
09/2008	11/19/2009	0.14
09/2008	11/19/2009	3.51
09/2008	11/19/2009	21.98
09/2008	11/19/2009	17.93
09/2008	11/19/2009	112.08
10/2008	11/19/2009	0.04
10/2008	11/19/2009	0.26
10/2008	11/19/2009	16.97
10/2008	11/19/2009	106.12
10/2008	11/19/2009	0.51
10/2008	11/19/2009	3.23
11/2008	11/19/2009	0.01
11/2008	11/19/2009	0.09
11/2008	11/19/2009	0.07
11/2008	11/19/2009	0.40
11/2008	11/19/2009	13.98
11/2008	11/19/2009	87.42
11/2008	11/19/2009	-0.01
11/2008	11/19/2009	-0.09
11/2008	11/19/2009	-0.07
11/2008	11/19/2009	-0.40
11/2008	11/19/2009	-13.98
11/2008	11/19/2009	-87.42
11/2008	11/19/2009	0.02
11/2008	11/19/2009	0.10
11/2008	11/19/2009	0.07
11/2008	11/19/2009	0.43
11/2008	11/19/2009	14.97
11/2008	11/19/2009	93.58
12/2008	11/19/2009	0.05
12/2008	11/19/2009	0.30
12/2008	11/19/2009	0.08
12/2008	11/19/2009	0.50
12/2008	11/19/2009	14.80
12/2008	11/19/2009	92.54
12/2008	11/19/2009	0.86
12/2008	11/19/2009	5.42
01/2009	11/19/2009	0.09
01/2009	11/19/2009	0.55
01/2009	11/19/2009	0.09
01/2009	11/19/2009	0.51
01/2009	11/19/2009	13.04
01/2009	11/19/2009	81.55
02/2009	11/19/2009	0.05
02/2009	11/19/2009	0.30
02/2009	11/19/2009	0.05
02/2009	11/19/2009	0.27
02/2009	11/19/2009	8.10
02/2009	11/19/2009	50.62
02/2009	11/19/2009	0.09
02/2009	11/19/2009	0.55

03/2009	11/19/2009	0.03
03/2009	11/19/2009	0.20
03/2009	11/19/2009	0.04
03/2009	11/19/2009	0.24
03/2009	11/19/2009	10.25
03/2009	11/19/2009	64.12
04/2009	11/19/2009	0.01
04/2009	11/19/2009	0.08
04/2009	11/19/2009	0.02
04/2009	11/19/2009	0.15
04/2009	11/19/2009	9.03
04/2009	11/19/2009	56.45
04/2009	11/19/2009	0.34
04/2009	11/19/2009	2.12
05/2009	11/19/2009	0.01
05/2009	11/19/2009	0.07
05/2009	11/19/2009	7.96
05/2009	11/19/2009	49.83
05/2009	11/19/2009	0.06
05/2009	11/19/2009	0.34
06/2009	11/19/2009	0.00
06/2009	11/19/2009	0.00
06/2009	11/19/2009	0.01
06/2009	11/19/2009	0.06
06/2009	11/19/2009	7.69
06/2009	11/19/2009	48.13
06/2009	11/19/2009	0.05
06/2009	11/19/2009	0.33
07/2009	11/19/2009	0.00
07/2009	11/19/2009	0.00
07/2009	11/19/2009	0.01
07/2009	11/19/2009	0.06
07/2009	11/19/2009	8.27
07/2009	11/19/2009	51.73
07/2009	11/19/2009	0.02
07/2009	11/19/2009	0.13
08/2009	11/19/2009	0.01
08/2009	11/19/2009	0.05
08/2009	11/19/2009	7.32
08/2009	11/19/2009	45.81
08/2009	11/19/2009	0.03
08/2009	11/19/2009	0.20
09/2009	11/19/2009	0.01
09/2009	11/19/2009	0.04
09/2009	11/19/2009	5.80
09/2009	11/19/2009	36.28
10/2009	12/09/2009	0.02
10/2009	12/09/2009	0.10
10/2009	12/09/2009	7.65
10/2009	12/09/2009	47.83
10/2009	12/09/2009	0.36
10/2009	12/09/2009	2.21
11/2009	01/13/2010	0.02
11/2009	01/13/2010	0.11

11/2009	01/13/2010	0.03
11/2009	01/13/2010	0.20
11/2009	01/13/2010	0.04
11/2009	01/13/2010	0.21
11/2009	01/13/2010	2.28
11/2009	01/13/2010	14.22
11/2009	01/13/2010	7.00
11/2009	01/13/2010	43.81
12/2009	02/10/2010	0.01
12/2009	02/10/2010	0.05
12/2009	02/10/2010	0.01
12/2009	02/10/2010	0.08
12/2009	02/10/2010	0.04
12/2009	02/10/2010	0.23
12/2009	02/10/2010	3.80
12/2009	02/10/2010	23.77
12/2009	02/10/2010	2.33
12/2009	02/10/2010	14.58
01/2010	03/09/2010	0.01
01/2010	03/09/2010	0.09
01/2010	03/09/2010	0.01
01/2010	03/09/2010	0.03
01/2010	03/09/2010	0.05
01/2010	03/09/2010	0.32
01/2010	03/09/2010	7.93
01/2010	03/09/2010	49.54
02/2010	04/14/2010	0.01
02/2010	04/14/2010	0.04
02/2010	04/14/2010	0.01
02/2010	04/14/2010	0.03
02/2010	04/14/2010	0.07
02/2010	04/14/2010	0.43
02/2010	04/14/2010	8.17
02/2010	04/14/2010	51.04
02/2010	04/14/2010	0.71
02/2010	04/14/2010	4.40
03/2010	05/10/2010	0.01
03/2010	05/10/2010	0.04
03/2010	05/10/2010	0.04
03/2010	05/10/2010	0.27
03/2010	05/10/2010	2.78
03/2010	05/10/2010	17.39
03/2010	05/10/2010	6.14
03/2010	05/10/2010	38.41
04/2010	06/08/2010	0.00
04/2010	06/08/2010	0.01
04/2010	06/08/2010	0.00
04/2010	06/08/2010	0.00
04/2010	06/08/2010	0.01
04/2010	06/08/2010	0.06
04/2010	06/08/2010	2.89
04/2010	06/08/2010	18.06
04/2010	06/08/2010	3.12
04/2010	06/08/2010	19.54

05/2010	07/13/2010	0.00
05/2010	07/13/2010	0.00
05/2010	07/13/2010	0.00
05/2010	07/13/2010	0.01
05/2010	07/13/2010	0.01
05/2010	07/13/2010	0.04
05/2010	07/13/2010	4.87
05/2010	07/13/2010	30.46
05/2010	07/13/2010	0.31
05/2010	07/13/2010	1.97
06/2010	08/10/2010	0.00
06/2010	08/10/2010	0.01
06/2010	08/10/2010	0.01
06/2010	08/10/2010	0.04
06/2010	08/10/2010	6.77
06/2010	08/10/2010	42.31
06/2010	08/10/2010	0.04
06/2010	08/10/2010	0.23
07/2010	09/10/2010	0.01
07/2010	09/10/2010	0.08
07/2010	09/10/2010	0.01
07/2010	09/10/2010	0.04
07/2010	09/10/2010	4.23
07/2010	09/10/2010	26.47
07/2010	09/10/2010	3.49
07/2010	09/10/2010	21.83
08/2010	10/11/2010	0.01
08/2010	10/11/2010	0.04
08/2010	10/11/2010	2.20
08/2010	10/11/2010	13.79
08/2010	10/11/2010	4.49
08/2010	10/11/2010	28.06
09/2010	11/11/2010	0.00
09/2010	11/11/2010	0.02
09/2010	11/11/2010	3.25
09/2010	11/11/2010	20.32
09/2010	11/11/2010	0.68
09/2010	11/11/2010	4.27
10/2010	12/09/2010	0.00
10/2010	12/09/2010	0.01
10/2010	12/09/2010	0.00
10/2010	12/09/2010	0.00
10/2010	12/09/2010	0.01
10/2010	12/09/2010	0.06
10/2010	12/09/2010	5.50
10/2010	12/09/2010	34.36
10/2010	12/09/2010	0.07
10/2010	12/09/2010	0.42
11/2010	01/13/2011	0.03
11/2010	01/13/2011	0.16
11/2010	01/13/2011	0.00
11/2010	01/13/2011	0.02
11/2010	01/13/2011	0.02
11/2010	01/13/2011	0.10

11/2010	01/13/2011	4.31
11/2010	01/13/2011	26.96
12/2010	02/11/2011	0.05
12/2010	02/11/2011	0.31
12/2010	02/11/2011	0.01
12/2010	02/11/2011	0.04
12/2010	02/11/2011	0.05
12/2010	02/11/2011	0.29
12/2010	02/11/2011	1.91
12/2010	02/11/2011	11.93
12/2010	02/11/2011	3.81
12/2010	02/11/2011	23.82
01/2011	03/11/2011	0.05
01/2011	03/11/2011	0.30
01/2011	03/11/2011	0.01
01/2011	03/11/2011	0.03
01/2011	03/11/2011	0.04
01/2011	03/11/2011	0.24
01/2011	03/11/2011	5.56
01/2011	03/11/2011	34.76
02/2011	04/12/2011	0.04
02/2011	04/12/2011	0.26
02/2011	04/12/2011	0.00
02/2011	04/12/2011	0.03
02/2011	04/12/2011	0.02
02/2011	04/12/2011	0.13
02/2011	04/12/2011	4.12
02/2011	04/12/2011	25.75
03/2011	05/11/2011	0.04
03/2011	05/11/2011	0.23
03/2011	05/11/2011	0.02
03/2011	05/11/2011	0.13
03/2011	05/11/2011	4.94
03/2011	05/11/2011	30.89
03/2011	05/11/2011	0.00
03/2011	05/11/2011	0.03
03/2011	05/11/2011	0.00
03/2011	05/11/2011	0.02
04/2011	06/11/2011	0.02
04/2011	06/11/2011	0.12
04/2011	06/11/2011	0.01
04/2011	06/11/2011	0.08
04/2011	06/11/2011	0.01
04/2011	06/11/2011	0.06
04/2011	06/11/2011	1.73
04/2011	06/11/2011	10.78
04/2011	06/11/2011	3.64
04/2011	06/11/2011	22.72
05/2011	07/13/2011	0.01
05/2011	07/13/2011	0.05
05/2011	07/13/2011	0.01
05/2011	07/13/2011	0.04
05/2011	07/13/2011	0.01
05/2011	07/13/2011	0.04

05/2011	07/13/2011	1.16
05/2011	07/13/2011	7.26
05/2011	07/13/2011	4.21
05/2011	07/13/2011	26.35
06/2011	02/10/2012	0.00
06/2011	02/10/2012	0.02
06/2011	02/10/2012	0.00
06/2011	02/10/2012	0.03
06/2011	02/10/2012	0.64
06/2011	02/10/2012	4.00
06/2011	02/10/2012	3.51
06/2011	02/10/2012	21.97
07/2011	02/10/2012	0.00
07/2011	02/10/2012	0.01
07/2011	02/10/2012	0.01
07/2011	02/10/2012	0.05
07/2011	02/10/2012	9.35
07/2011	02/10/2012	58.49
07/2011	02/10/2012	0.05
07/2011	02/10/2012	0.29
08/2011	02/10/2012	0.00
08/2011	02/10/2012	0.01
08/2011	02/10/2012	0.01
08/2011	02/10/2012	0.05
08/2011	02/10/2012	4.80
08/2011	02/10/2012	30.00
08/2011	02/10/2012	2.10
08/2011	02/10/2012	13.16
09/2011	02/10/2012	0.01
09/2011	02/10/2012	0.09
09/2011	02/10/2012	0.01
09/2011	02/10/2012	0.05
09/2011	02/10/2012	7.14
09/2011	02/10/2012	44.63
10/2011	02/10/2012	0.02
10/2011	02/10/2012	0.11
10/2011	02/10/2012	0.02
10/2011	02/10/2012	0.10
10/2011	02/10/2012	6.04
10/2011	02/10/2012	37.80
11/2011	02/10/2012	0.02
11/2011	02/10/2012	0.13
11/2011	02/10/2012	0.01
11/2011	02/10/2012	0.09
11/2011	02/10/2012	2.58
11/2011	02/10/2012	16.14
11/2011	02/10/2012	0.75
11/2011	02/10/2012	4.68
12/2011	02/10/2012	0.04
12/2011	02/10/2012	0.21
12/2011	02/10/2012	0.02
12/2011	02/10/2012	0.13
12/2011	02/10/2012	1.29
12/2011	02/10/2012	8.08

12/2011	02/10/2012	2.08
12/2011	02/10/2012	12.98
01/2012	03/12/2012	0.03
01/2012	03/12/2012	0.19
01/2012	03/12/2012	0.00
01/2012	03/12/2012	0.02
01/2012	03/12/2012	0.02
01/2012	03/12/2012	0.13
01/2012	03/12/2012	0.68
01/2012	03/12/2012	4.27
01/2012	03/12/2012	1.78
01/2012	03/12/2012	11.11
02/2012	04/13/2012	0.04
02/2012	04/13/2012	0.24
02/2012	04/13/2012	0.00
02/2012	04/13/2012	0.01
02/2012	04/13/2012	0.02
02/2012	04/13/2012	0.15
02/2012	04/13/2012	1.43
02/2012	04/13/2012	8.94
02/2012	04/13/2012	1.70
02/2012	04/13/2012	10.60
03/2012	05/11/2012	0.02
03/2012	05/11/2012	0.10
03/2012	05/11/2012	0.00
03/2012	05/11/2012	0.01
03/2012	05/11/2012	0.01
03/2012	05/11/2012	0.06
03/2012	05/11/2012	1.09
03/2012	05/11/2012	6.81
03/2012	05/11/2012	1.83
03/2012	05/11/2012	11.47
04/2012	06/12/2012	0.01
04/2012	06/12/2012	0.07
04/2012	06/12/2012	0.00
04/2012	06/12/2012	0.00
04/2012	06/12/2012	0.01
04/2012	06/12/2012	0.03
04/2012	06/12/2012	0.66
04/2012	06/12/2012	4.14
04/2012	06/12/2012	1.82
04/2012	06/12/2012	11.38
05/2012	07/11/2012	0.02
05/2012	07/11/2012	0.11
05/2012	07/11/2012	0.00
05/2012	07/11/2012	0.00
05/2012	07/11/2012	0.00
05/2012	07/11/2012	0.02
05/2012	07/11/2012	0.65
05/2012	07/11/2012	4.08
05/2012	07/11/2012	1.81
05/2012	07/11/2012	11.35
06/2012	08/10/2012	0.00
06/2012	08/10/2012	0.00

06/2012	08/10/2012	0.49
06/2012	08/10/2012	3.07
06/2012	08/10/2012	0.00
06/2012	08/10/2012	0.01
06/2012	08/10/2012	1.35
06/2012	08/10/2012	8.42
07/2012	09/12/2012	0.00
07/2012	09/12/2012	0.01
07/2012	09/12/2012	0.07
07/2012	09/12/2012	0.41
07/2012	09/12/2012	0.00
07/2012	09/12/2012	0.02
07/2012	09/12/2012	2.97
07/2012	09/12/2012	18.58
08/2012	10/10/2012	0.00
08/2012	10/10/2012	0.01
08/2012	10/10/2012	2.39
08/2012	10/10/2012	14.91
08/2012	10/10/2012	0.00
08/2012	10/10/2012	0.03
08/2012	10/10/2012	0.95
08/2012	10/10/2012	5.96
09/2012	11/09/2012	0.00
09/2012	11/09/2012	0.00
09/2012	11/09/2012	0.01
09/2012	11/09/2012	0.04
09/2012	11/09/2012	1.97
09/2012	11/09/2012	12.34
09/2012	11/09/2012	2.47
09/2012	11/09/2012	15.47
10/2012	12/12/2012	2.38
10/2012	12/12/2012	14.83
10/2012	12/12/2012	0.00
10/2012	12/12/2012	0.01
10/2012	12/12/2012	0.02
10/2012	12/12/2012	0.11
10/2012	12/12/2012	3.92
10/2012	12/12/2012	24.50
11/2012	01/10/2013	0.00
11/2012	01/10/2013	0.01
11/2012	01/10/2013	0.04
11/2012	01/10/2013	0.23
11/2012	01/10/2013	1.56
11/2012	01/10/2013	9.79
11/2012	01/10/2013	4.66
11/2012	01/10/2013	29.10
12/2012	02/11/2013	5.85
12/2012	02/11/2013	36.59

EQT Payments through 02/2013 10,223.41

Escrow Agent Summary February 2013

<u>Unit Name</u>	<u>Docket #</u>	<u>Unit Operator</u>	<u>Beginning Market Value</u>	<u>Deposits</u>	<u>Money Mkt Interest</u>	<u>CDARS Interest</u>	<u>Fees for 01/2013</u>	<u>Audit Costs</u>	<u>Ending Market Value</u>
V502726	1362	EQT	\$10,586.63	\$42.44	\$0.23	\$2.16	(\$0.88)	(\$1.65)	\$10,628.93

STATE OF MARYLAND

Department of Health and Mental Hygiene

Division of Vital Records

Please Type or Print in Black Indelible Ink. Ensure All Copies Are Legible.

State of Maryland / Department of Health and Mental Hygiene

Certificate of Death

Reg. No. **2001 10440**

1- For State Registrar

To Be Completed by Funeral Director

To Be Completed by Physician/Medical Examiner

1. Decedent's Name (First, Middle, Last) Viola Evelyn Carter			2. Date of Death Month March Day 19 Year 2001		3. Time of Death 23:40	
4a. Facility Name (If not institution, give street and number) Upper Chesapeake Medical Center			4b. City, Town, or Location of Death Bel Air		4c. County of Death Harford	
5. Social Security Number 407-40-4828		6. Sex <input type="checkbox"/> M <input checked="" type="checkbox"/> F	7. Age (In yrs. last birthday) Yrs. 64		8. Date of Birth (Month, Day, Year) SEPT 23, 1936	9. Birthplace (State or Foreign Country) Kentucky
10a. State Maryland		10b. County Cecil		10c. City, Town or Location North East		10d. Inside City Limits <input type="checkbox"/> Yes <input checked="" type="checkbox"/> No
10e. Street and Number 301 Pennsylvania Avenue			10f. Zip Code 21901		10g. Citizen of What Country? United States	
11. Marital Status <input type="checkbox"/> Never Married <input checked="" type="checkbox"/> Married <input checked="" type="checkbox"/> Widowed <input type="checkbox"/> Divorced		12. Was Decedent Ever in U.S. Armed Forces? <input type="checkbox"/> Yes <input checked="" type="checkbox"/> No If Yes, Give Year or Dates:		13. Was Decedent of Hispanic Origin? (Specify Yes or No. If Yes, specify Cuban, Mexican, Puerto Rican, etc.) <input type="checkbox"/> Yes <input checked="" type="checkbox"/> No Specify		14. Race - American Indian, Black, White, etc. Specify: White
15. Decedent's Education (Specify only highest grade completed) Elementary/Secondary (0-12) 12			16a. Decedent's Usual Occupation (Give kind of work done during most of working life. DO NOT use retired) Sales		16b. Kind of Business/Industry Automobile Retail	
17. Father's Name (First, Middle, Last) Glen Mauk			18. Mother's Name (First, Middle, Maiden Surname) Faye Carroll			
19a. Informant's Name/Relationship (Type, Print) David B. Carter/Son			19b. Mailing Address (Street and Number or Rural Route Number, City or Town, State, Zip Code) 5 Westover Place, North East, Maryland 21901			
20a. Method of Disposition <input checked="" type="checkbox"/> Burial <input type="checkbox"/> Cremation <input type="checkbox"/> Removal from State <input type="checkbox"/> Donation <input type="checkbox"/> Other (Specify)		20b. Place of Disposition (Name of cemetery, crematory or other place) North East Methodist Cemetery		Date March 24, 2001		20c. Location - City or Town, State North East, Maryland
21. Signature of Funeral Service Director <i>[Signature]</i>			22. Name and Address of Facility Hicks Home for Funerals, P.A. 103 W. Stockton Street, Elkton, Maryland 21921			
23a. Part I. Enter the disease, or combination thereof, which caused the death. Do not enter the mode of dying, such as cardiac or respiratory arrest. Immediate Cause (Final disease or condition resulting in death) Pancreatic Cancer						Approximate Interval Between Onset and Death About one year
23b. Part II. Enter the disease, or combination thereof, which caused the death. Do not enter the mode of dying, such as cardiac or respiratory arrest. Subsequent or list conditions, if any, leading to immediate cause. Enter Underlying Cause (Disease or injury that induced events resulting in death) List						
23c. If FEMALE: Was decedent pregnant in the past 12 months? <input type="checkbox"/> Yes <input checked="" type="checkbox"/> No <input type="checkbox"/> Unknown		23c. If yes, outcome of pregnancy <input checked="" type="checkbox"/> Live birth <input type="checkbox"/> Fetal death <input type="checkbox"/> Ectopic pregnancy <input type="checkbox"/> Pregnant at time of death <input type="checkbox"/> Other (specify)			23d. Date of delivery Month Day Year	
Part II. Other significant conditions contributing to death but not resulting in the underlying cause given in Part I.					23e. Did tobacco use contribute to the cause of death? <input type="checkbox"/> Yes <input checked="" type="checkbox"/> No <input type="checkbox"/> Probably <input checked="" type="checkbox"/> Unknown	
24a. Was an autopsy performed? <input type="checkbox"/> Yes <input checked="" type="checkbox"/> No			24b. Were autopsy findings available only to corroborate cause of death? <input type="checkbox"/> Yes <input checked="" type="checkbox"/> No			
25. Was case referred to medical examiner? <input type="checkbox"/> Yes <input checked="" type="checkbox"/> No		26. Place of Death (Check only one) Hospital <input checked="" type="checkbox"/> Outpatient <input type="checkbox"/> ER/Outpatient <input type="checkbox"/> DOA <input type="checkbox"/> Other <input type="checkbox"/> Nursing Home <input type="checkbox"/> Residence <input type="checkbox"/> Other (Specify)		27. Manner of Death: <input checked="" type="checkbox"/> Natural <input type="checkbox"/> Pending investigation <input type="checkbox"/> Suicide <input type="checkbox"/> Homicide <input type="checkbox"/> Could not be determined		28a. Date of Injury (Month, Day, Year)
28b. Time of Injury		28c. Injury at Work? <input type="checkbox"/> Yes <input checked="" type="checkbox"/> No		28d. Describe how injury occurred		
28e. Place of Injury - At home, farm, street, factory, office building, etc. (Specify)			28f. Location (Street and Number or Rural Route Number, City or Town, State)			

To Be Completed by

Medical Certification: To Be Completed by Physician/Medical Examiner

3 <input checked="" type="checkbox"/> Widowed 4 <input type="checkbox"/> Divorced		Year or Dates:		Race: White	
15. Decedent's Education (Specify only highest grade completed)		16a. Decedent's Usual Occupation (Give kind of work done during most of working life. DO NOT use retired)		16b. Kind of Business/Industry	
Elementary/Secondary (0-12) 12		College (1-4or 5+)		Sales Automobile Retail	
17. Father's Name (First, Middle, Last) Glen Mauk			18. Mother's Name (First, Middle, Maiden Surname) Faye Carroll		
19a. Informant's Name/Relationship (Type, Print) David B. Carter/Son		19b. Mailing Address (Street and Number or Rural Route Number, City or Town, State, Zip Code) 5 Westover Place, North East, Maryland 21901			
20a. Method of Disposition 1 <input checked="" type="checkbox"/> Burial 2 <input type="checkbox"/> Cremation 3 <input type="checkbox"/> Removal from State 4 <input type="checkbox"/> Donation 5 <input type="checkbox"/> Other (Specify)		20b. Place of Disposition (Name of cemetery, crematory or other place) North East Methodist Cemetery		20c. Location - City or Town, State March 24, 2001 North East, Maryland	
21. Signature of Funeral Service Licenses <i>[Signature]</i>		22. Name and Address of Facility Hicks Home for Funerals, P.A. 103 W. Stockton Street, Elkton, Maryland 21921			
23a. Part I: Enter the disease, or combination that caused the death. Do not enter the mode of dying, such as cardiac or respiratory arrest. Immediate Cause (Final disease or condition resulting in death) Pancreatic Cancer Approximate Interval Between Onset and Death about one year					
23b. Part II: Enter the disease, or combination that caused the death. Do not enter the mode of dying, such as cardiac or respiratory arrest. Sequitely list conditions, if any, leading to immediate cause. Enter Underlying Cause (Disease or injury that related events resulting in death) List					
23c. If yes, outcome of pregnancy 1 <input type="checkbox"/> Live birth 2 <input type="checkbox"/> Fetal death 3 <input type="checkbox"/> Ectopic pregnancy 4 <input type="checkbox"/> Pregnant at time of death 5 <input type="checkbox"/> Other (specify)		23d. Date of delivery Month Day Year			
Part II: Other significant conditions contributing to death but not resulting in the underlying cause given in Part I.					
23a. Did tobacco use contribute to the cause of death? 1 <input type="checkbox"/> Yes 2 <input type="checkbox"/> No 3 <input type="checkbox"/> Probably 4 <input checked="" type="checkbox"/> Unknown				24a. Was an autopsy performed? 1 <input type="checkbox"/> Yes 2 <input checked="" type="checkbox"/> No	
24b. Were autopsy findings available prior to completion of cause of death? 1 <input type="checkbox"/> Yes 2 <input type="checkbox"/> No					
25. Was case referred to medical examiner? 1 <input type="checkbox"/> Yes 2 <input checked="" type="checkbox"/> No		26. Place of Death (Check only one) Hospital: 1 <input checked="" type="checkbox"/> Inpatient 2 <input type="checkbox"/> ER/Outpatient 3 <input type="checkbox"/> DOA Other: 4 <input type="checkbox"/> Nursing Home 5 <input type="checkbox"/> Residence 6 <input type="checkbox"/> Other (Specify)			
27. Manner of Death: 1 <input checked="" type="checkbox"/> Natural 2 <input type="checkbox"/> Accident 3 <input type="checkbox"/> Suicide 4 <input type="checkbox"/> Homicide 5 <input type="checkbox"/> Pending investigation 6 <input type="checkbox"/> Could not be determined		28a. Date of Injury (Month, Day, Year)		28b. Time of Injury M	
28c. Injury at Work? 1 <input type="checkbox"/> Yes 2 <input type="checkbox"/> No		28d. Describe how injury occurred		28e. Location (Street and Number or Rural Route Number, City or Town, State)	
29a. Certifying Physician: To the best of my knowledge, death occurred at the time, date and place, and due to the cause(s) and manner as stated. 29b. Medical Examiner: On the basis of examination and/or investigation, in my opinion, death occurred at the time, date and place, and due to the cause(s) and manner stated.					
29c. Signature and title of certifier <i>Albert S. C. Smith M.D.</i>		29d. License number D-0018779		29e. Date signed (Month, Day, Year) March 20, 2001	
30. Name and address of person who completed cause of death (Item 23a) (Type, Print) ALBERT S. C. SMITH, M.D. 1716 HARFORD ROAD FALLSTON, MD 21047					
31. Registrar's Signature <i>[Signature]</i>		32. Registrar's Title Sparks			

HEREBY CERTIFY THAT THIS DOCUMENT IS A TRUE COPY OF A RECORD ON FILE IN THE DIVISION OF VITAL RECORDS.

Date Issued
May 2, 2012

[Signature]
STATE REGISTRAR

DO NOT ACCEPT UNLESS ON SECURITY PAPER WITH SEAL OF VITAL RECORDS CLEARLY EMBOSSED.

ANY ALTERATION OR ERASURE VOIDS THIS CERTIFICATE

Oct. 2, 2000

I Viola E. Carter, with a sound mind do declare this my last will and testament. I leave all my worldly possessions to my children, James William Carter, David Ballard Carter and Shannon Jaye Merrill. If my children are deceased, their children by blood inherit their part.

Viola E Carter

Witnesses:

Jerline Dickens
 Jerline Dickens 10/2/2000

Sandra Carter 10/2/2000
Sandra Carter

FILED 11/5/2012
 REGISTER OF WILLS
 CECIL COUNTY, MD

TRUE COPY
 TEST: *Allyn P. Nickle*
 Register of Wills

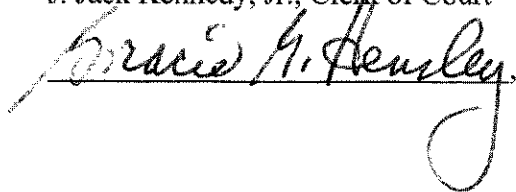
VIRGINIA: IN THE CLERK'S OFFICE OF THE CIRCUIT COURT OF WISE COUNTY AND CITY OF NORTON, ON THE 11TH DAY OF JANUARY, 2013.

COURT FILE NO. 130000017

An authenticated copy of the will, dated 10th day of October, 2000 of Viola Evelyn Carter , deceased, of the State of Maryland, but having estate in Wise County and City of Norton, Virginia, within the jurisdiction of this court, together with certificates thereto annexed showing the probate thereof in the Register of Wills Court of the County of Cecil in the State of Maryland, on the 10th day of December, 2012, all duly exemplified, was this day presented to the Clerk of this Court by David Ballard Carter , (a beneficiary) and offered for probate as a will of real estate in this State.

And it appearing from inspection thereof that the will was proved in the foreign court of probate to have been so executed as to be a valid will of the lands in this State, by the law thereof, the Clerk, pursuant to Sec.64.2-450, Code of Virginia, does ORDER that the aforesaid copy be and it is now admitted to probate as a will of real estate in this State, and that it, together with the certificates annexed, be recorded as such.

J. Jack Kennedy, Jr., Clerk of Court

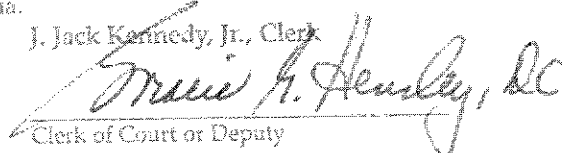
 Clerk

This is to certify that this is a true and correct reproduction or abstract of the official record filed with the Circuit Court for the County of Wise and the City of Norton, Commonwealth of Virginia.

Date Issued

1/11/13

J. Jack Kennedy, Jr., Clerk

 Clerk of Court or Deputy

(SEAL)

VOID IF ALTERED OR DOES NOT
BEAR IMPRESSED SEAL OF COURT

IN THE ORPHANS' COURT FOR
(OR)
BEFORE THE REGISTER OF WILLS FOR CECIL COUNTY, MARYLAND

IN THE ESTATE OF:

VIOLA EVELYN CARTER

ESTATE NO. 18390

FOR:

**REGULAR ESTATE
PETITION FOR ADMINISTRATION**

Estate value in excess of \$50,000.
(If spouse is sole heir or legatee, \$100,000.)
Values for DOD before October 1, 2012 are
\$30,000 and \$50,000 if spouse is the sole
legatee or heir.

Complete and attach **Schedule A.**

**SMALL ESTATE
PETITION FOR ADMINISTRATION**

Estate value of \$50,000 or less.
(If spouse is sole heir or legatee, \$100,000.)
Values for DOD before October 1, 2012 are
\$30,000 and \$50,000 if spouse is the sole
legatee or heir.

Complete and attach **Schedule B.**

**WILL OF NO ESTATE
Complete items 2 and 5**

**LIMITED ORDERS
Complete item 2 and
attach Schedule C**

The Petition of:

DAVID BALLARD CARTER

325 OLD BAYVIEW ROAD

NORTH EAST, MD 21901

Name

Address

Name

Address

Each of us states:

1. I am (a) at least 18 years of age and either a citizen of the United States or a permanent resident of the United States who is the spouse of the decedent, an ancestor of the decedent, a descendant of the decedent, or a sibling of the decedent or (b) a trust company or any other corporation authorized by law to act as a personal representative.
2. The Decedent, VIOLA EVELYN CARTER, was domiciled in CECIL COUNTY, State of MARYLAND and died on the 19th day of MARCH, 2001, at BEL AIR, MD
(County) (place of death)
3. If the decedent was not domiciled in this county at the time of death, this is the proper office in which to file this petition because: N/A DECEDENT WAS DOMICILED IN THIS COUNTY
4. I am entitled to priority of appointment as personal representative of the decedent's estate pursuant to §5-104 of the Estates and Trusts Article, Annotated Code of Maryland because: I AM DECEDENT'S SON WITH CONSENT OF ALL PERSONS WITHIN THE SAME PRIORITY CLASS

and I am not excluded by §5-105(b) of the Estates and Trusts Article, Annotated Code of Maryland from serving as personal representative.

Regular Estate - RW1112 Page 1 of 2 with Schedule A (RW1136)
Small Estate - RW1103 Page 1 of 2 with Schedule B (RW1137)
Will of No Estate - RW1135 Page 1 of 2
Limited Order - RW1147 Page 1 of 2 with Schedule C (RW1148)

ROWNET
10/2012

FILED 12/10/12
REGISTER OF WILLS
CECIL COUNTY, MD

5. I have made a diligent search for the decedent's will and to the best of my knowledge:

none exists; or

the will dated 10/2/2000 (including codicils, if any, dated _____)

accompanying this petition is the last will and it came into my hands in the following manner:

MAINTAINED IN DECEDENT'S BIBLE AMONG HER IMPORTANT PAPERS AT HER RESIDENCE

and the names and last known addresses of the witnesses are:

JERELINE DICKENS

SANDRA CARTER

6. Other proceedings, if any, regarding the decedent or the estate are as follows:

NONE EXCEPT POTENTIAL FOREIGN ESTATE IN VA

7. If any information required by paragraphs 2 through 6 has not been furnished, the reason is:

ALL KNOWN INFORMATION HAS BEEN SUBMITTED

8. If appointed, I accept the duties of the office of personal representative and consent to personal jurisdiction in any action brought in this State against me as personal representative or arising out of the duties of the office of personal representative.

WHEREFORE, I request appointment as personal representative of the decedent's estate and the following relief as indicated:

that the will and codicils, if any, be admitted to administrative probate;

that the will and codicils, if any, be admitted to judicial probate;

that the will and codicils, if any, be filed only;

that only a limited order be issued;

that the following additional relief be granted: AS THE NATURE OF THESE PROCEEDINGS MAY REQUIRE

I solemnly affirm under the penalties of perjury that the contents of the foregoing petition are true to the best of my knowledge, information and belief.

Attorney

David Ballard Carter 11-29-2012
DAVID BALLARD CARTER Date

Address

Petitioner

Date

Petitioner

Date

Telephone Number

Telephone Number (optional)

Regular Estate - RW1112 Page 2 of 2 with Schedule A (RW1136)
Small Estate - RW1103 Page 2 of 2 with Schedule B (RW1137)
Will of No Estate - RW1135 Page 2 of 2
Limited Order - RW1147 Page 2 of 2 with Schedule C (RW1148)

ROWNET
11/2009

IN THE ORPHANS' COURT FOR

(OR)

CECIL COUNTY, MARYLAND

BEFORE THE REGISTER OF WILLS FOR

IN THE ESTATE OF:

VIOLA EVELYN CARTER

ESTATE NO. 18390

SCHEDULE - B

Small Estate - Assets and Debts of the Decedent

1. I have made a diligent search to discover all property and debts of the decedent and set forth below are :

(a) A listing of all real and personal property owned by the decedent, individually or as tenant in common, and of any other property to which the decedent or estate would be entitled, including descriptions, values, and how the values were determined:

NO KNOWN ASSETS; PROBATE FOR THE PURPOSE OF FILING ANCILLARY PROCEEDINGS IN VA

(b) A listing of all creditors and claimants and the amounts claimed, including secured*, contingent and disputed claims:

HICKS HOME FOR FUNERALS, PA \$6,309.74

2. Allowable funeral expenses are \$5,000.00; statutory family allowances are \$0.00; and expenses of administration claimed are \$2.00

3. Attached is a List of Interested Persons.

4. After the time for filing claims has expired, subject to the statutory order of priorities, and subject to the resolution of disputed claims by the parties or the court, I shall (1) pay all proper claims**, expenses, and allowances not previously paid; (2) if necessary, sell property of the estate in order to do so; and (3) distribute the remaining assets of the estate in accordance with the will or, if none, with the intestacy laws of this State.

* NOTE: §5-601(d) of the Estates and Trusts Article, Annotated Code of Maryland "For the purpose of this subtitle - value is determined by the fair market value of property less debts of record secured by the property as of the date of death to the extent that insurance benefits are not payable to the lien holder or secured party for the secured debt."

**NOTE: Proper claims shall be paid pursuant to the provisions of Code, Estates and Trusts Article, §8-104 and §8-105.

I solemnly affirm under the penalties of perjury that the contents of the foregoing schedule are true to the best of my knowledge, information and belief.

Attorney

DAVID BALLARD CARTER

Date

Address

Petitioner

Date

Petitioner

Date

Telephone Number

Telephone Number (optional)

RW1137

ROWNET 11/2009

TRUE COPY TEST: [Signature] Register of Wills

IN THE ORPHANS' COURT FOR

(OR)

CECIL COUNTY, MARYLAND

BEFORE THE REGISTER OF WILLS FOR

IN THE ESTATE OF:

VIOLA EVELYN CARTER

ESTATE NO. 18390

PROOF OF EXECUTION OF WILL

I solemnly affirm under the penalties of perjury that I have personal knowledge that the will of

VIOLA EVELYN CARTER

dated

10/02/2000

was signed or acknowledged by the testator in the presence of the following witness (es):

JERELINE DICKENS AND SANDRA CARTER

who signed at the testator's request and in the testator's presence.

Attorney

Declarant

Date

Sandra Carter

Address

Address

19 First Ave

North East M.D. 21901

Telephone Number

(FOR REGISTER'S USE)

Date of Death 3/19/2001

Date Will was admitted to probate

RW1102

FILED 11/12 ROWNET
REGISTER OF WILLS 11/2009
CECIL COUNTY, MD

IN THE ORPHANS' COURT FOR
(OR)

CECIL COUNTY, MARYLAND

BEFORE THE REGISTER OF WILLS FOR

IN THE ESTATE OF:
VIOLA EVELYN CARTER

ESTATE NO. 18390

PROOF OF EXECUTION OF WILL

I solemnly affirm under the penalties of perjury that I have personal knowledge that the will of

VIOLA EVELYN CARTER

dated

10/02/2000

was signed or acknowledged by the testator in the presence of the following witness (es):

JERELINE DICKENS AND SANDRA CARTER

who signed at the testator's request and in the testator's presence.

Attorney

Declarant

Date

Jerelene Dickens

Address

1001 Ebenezer Church Road

Address

Rising Sun Md. 21911

Telephone Number

(FOR REGISTER'S USE)

Date of Death 3/19/2001

Date Will was admitted to probate _____

RW1102

FILED

11/7/12

RQWNET

REGISTER OF WILLS
CECIL COUNTY, MD

T1/2009

Hicks Home For Funerals, P.A.

Donald S. Hicks - Licensed Director

103 West Stockton Street

Elkton, Maryland 21921

410-398-3122

www.hickshomeforfunerals.com

Services for

MRS. VIOLA E, CARTER

March 20, 2001

Professional Services

Services of Funeral Directors and Assistants \$ 960.00
Embalming care 525.00
Other preparations 125.00

\$1610.00

Facilities and Equipment

Staff and equipment for visitation and
funeral service, North East Church of
God, Saturday, March 24, 2001 \$ 650.00

\$ 650.00

Automotive Equipment

Transfer from Upper Chesapeake Hospital to
funeral home \$ 150.00
Flower car 125.00
Hearse for day of Service 200.00

\$ 475.00

TOTAL FOR SERVICES

\$2735.00

Materials Selected

Casket, 18 gauge steel, full open, Three
Roses, white with pink crepe interior \$1987.00
Outer burial container, Eagle Sentinel vault,
placed 870.00
Register Book, Acknowledgement cards,
memorial folders 57.00

\$2914.00

TOTAL FOR MATERIALS

\$2914.00

Special Charges

Saturday placement charge \$ 150.00

\$ 150.00

TOTAL SPECIAL CHARGES

\$ 150.00

TOTAL FUNERAL HOME CHARGES

\$5799.00

Cash Advance Items for Family Convenience

Certified Copies of Maryland Death Certificate,
6 @ \$6. each \$ 36.00
Grave opening and closing, North East
Methodist Cemetery 350.00
Local obituaries
News Journal no charge
Burlington County Times 78.34
Cecil Whig 46.40

\$ 510.74

TOTAL CASH ADVANCE ITEMS

\$ 510.74

SUMMARY

FUNERAL HOME CHARGES \$5799.00
CASH ADVANCE ITEMS 510.74
TOTAL \$6309.74

IN THE ORPHANS' COURT FOR

(OR)

CECIL COUNTY, MARYLAND

BEFORE THE REGISTER OF WILLS FOR

IN THE ESTATE OF:

VIOLA EVELYN CARTER

ESTATE NO. 18390

CONSENT TO APPOINTMENT OF PERSONAL REPRESENTATIVE OF SMALL ESTATE

I, SANDRA K CARTER DAUGHTER, the personal representative named in the will OR ask the court or register to appoint (state name and relationship to decedent or other basis for appointment)

DAVID BALLARD CARTER instead of me to serve as personal representative and consent to that appointment. I understand that if DAVID BALLARD CARTER

is so appointed I may not withdraw this consent so long as DAVID BALLARD CARTER remains personal representative, except upon a showing of good cause.

DATE

SIGNATURE

NAME

(typed or printed)

11-5-2012

Sandra Carter

SANDRA K CARTER

Attorney

Address

Telephone Number

RW1105

FILED 12/10/12 REGISTER OF WILLS CECIL COUNTY, MD

ROWNET 11/2009

(FILE IN DUPLICATE)

(name and address of attorney)

**SMALL ESTATE
NOTICE OF APPOINTMENT
NOTICE TO CREDITORS
NOTICE TO UNKNOWN HEIRS**

ESTATE NO. 18390

TO ALL PERSONS INTERESTED IN THE ESTATE OF
VIOLA EVELYN CARTER

Notice is given that

DAVID BALLARD CARTER
325 OLD BAYVIEW ROAD
NORTH EAST, MD 21901

was on 12/18/12 appointed personal representative of the small estate of VIOLA EVELYN CARTER

who died on MARCH 19, 2001 with a will.
(date)

Further information can be obtained by reviewing the estate file in the office of the Register of Wills or by contacting the personal representative or the attorney.

All persons having any objection to the appointment shall file their objections with the Register of Wills within 30 days after the date of publication of this Notice. All persons having an objection to the probate of the will shall file their objections with the Register of Wills within six months after the date of publication of this Notice.

All persons having claims against the decedent must serve their claims on the undersigned personal representative or file them with the Register of Wills with a copy to the undersigned on or before the earlier of the following dates :

- (1) Six months from the date of the decedent's death, except if the decedent died before October 1, 1992, nine months from the date of the decedent's death; or
- (2) Thirty days after the personal representative mails or otherwise delivers to the creditor a copy of this published notice or other written notice, notifying the creditor that the claims will be barred unless the creditor presents the claim within thirty days from the mailing or other delivery of the notice. Any claim not served or filed within that time, or any extension provided by law, is unenforceable thereafter.

Name of newspaper designated by personal representative: Cecil Whig

David Ballard Carter 11-29-12
DAVID BALLARD CARTER

Personal Representative

Date of Publication: 12/19/12

Personal Representative

True Test Copy

Name and Address of Register of Wills for Cecil County

ALLYN PRICE NICKLE

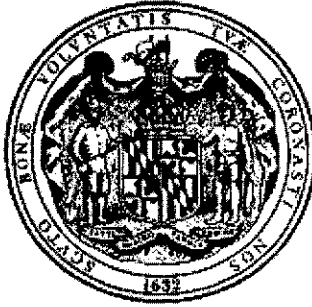
CIRCUIT COURTHOUSE POST OFFICE BOX 468

ELKTON, MD 21922-0468

RW1109

PUBLISH ONE TIME FILED 12/10/12
REGISTER OF WILLS
CECIL COUNTY, MD

ROWNET
11/2009



**STATE OF MARYLAND
LETTERS OF ADMINISTRATION
OF A SMALL ESTATE**

Estate No. 18390

I certify that administration of the Estate of

VIOLA EVELYN CARTER

was granted on the 10th day of DECEMBER, 2012

to DAVID BALLARD CARTER

as personal representative(s) and the appointment is in effect

this 14th day of DECEMBER, 2012

Will probated DECEMBER 10, 2012
(date)

Intestate estate

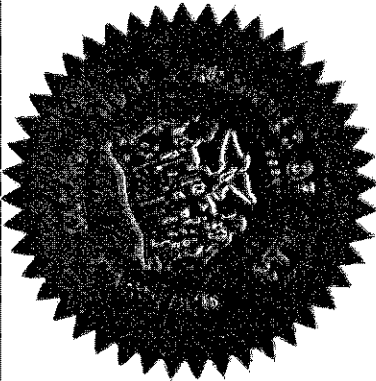
Unprobated Will - Probate Not Required

Allyn Price Nickle

ALLYN PRICE NICKLE

Register of Wills for

CECIL COUNTY



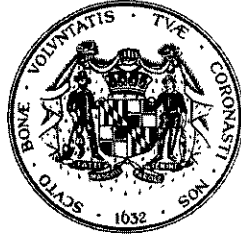
VALID ONLY IF SEALED WITH THE SEAL OF THE COURT OR THE REGISTER

RW1107

ROWNET
11/2009

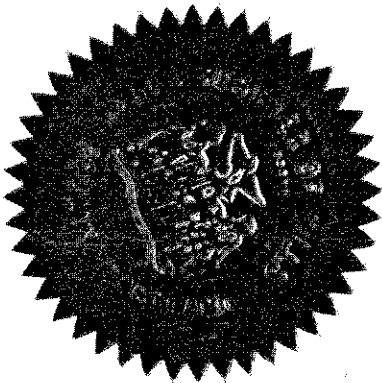
VIRGINIA
IN THE CLERK'S OFFICE OF
WISE COUNTY
JANUARY 11, 2013 AT 02:43PM
WILLS/FIDUCIARY
INSTRUMENT #130000017 WAS RECORDED
UPON CERTIFICATION OF ACKNOWLEDGEMENT
THERE TO ANNEXED, ADMITTED TO RECORD.
THE FEE AND TAX OF \$32.00 IMPOSED
BY LAW HAVE BEEN PAID (RCPT 13000000527)
TESTE: J. JACK KENNEDY, JR., CLERK

RECORDED BY: GGH



STATE OF MARYLAND,
CECIL COUNTY, SS.:

I, Allyn Price Nickle, Register of Wills, in and for Cecil County, do hereby certify that the foregoing is a true and full copy of the Last Will and Testament of Viola Evelyn Carter, deceased, late of Cecil County, along with the Proof of Execution of Will, Small Estate Petition for Administration, Consent to Appointment of Personal Representative of Small Estate, List of Interested Persons, Small Estate Notice of Appointment Notice to Creditors Notice to Unknown Heirs, and Order for Small Estate as recorded in Estate Number 18390 as the same remains on file and of record in my office.



IN TESTIMONY WHEREOF I hereunto
subscribe my name and affix the seal of my
office this 14th day of December, Two thousand
twelve.

Allyn Price Nickle / sp

Allyn Price Nickle

Register of Wills for Cecil County

IN THE ORPHANS' COURT FOR

(OR)

CECIL COUNTY, MARYLAND

BEFORE THE REGISTER OF WILLS FOR

IN THE ESTATE OF:

VIOLA EVELYN CARTER

ESTATE NO. 18390

ORDER FOR SMALL ESTATE

Upon the foregoing Petition, it is this 10th day of DECEMBER, 2012, by the Register of Wills ordered that:

- 1. The estate of VIOLA EVELYN CARTER shall be administered as a small estate.
2. DAVID BALLARD CARTER shall serve as personal representative(s).
3. The personal representative shall pay fees due the register, expenses of administration, allowable funeral expenses, and statutory family allowances, and, if necessary, sell property of the decedent in order to pay them.
4. The will dated OCTOBER 2, 2000 (including codicils, if any, dated) accompanying the petition is:
[] admitted to probate; or
[] retained on file only.
5. Publication is:
[] not required; or
[] required and Notice of Appointment shall be published once in a newspaper of general circulation in the county of appointment.
6. When publication is required, the personal representative shall, subject to the statutory order of priorities and the resolution of disputed claims by the parties or by the court: (a) pay all proper claims, expenses, and allowances not previously paid; (b) if necessary, sell property of the estate in order to do so; and (c) distribute the remaining property of the estate in accordance with the will or, if none, with the intestacy laws of this State.

Allyn Price Nickle, Inc.
ALLYN PRICE NICKLE
Register of Wills

THIS ORDER DOES NOT CONSTITUTE LETTERS OF ADMINISTRATION AND DOES NOT AUTHORIZE THE TRANSFER OF ASSETS.

Certificate of Service

I hereby certify that on this 10th day of DECEMBER, 2012, I delivered or mailed, postage prepaid, a copy of the foregoing Order to DAVID BALLARD CARTER Personal Representative.

DAVID BALLARD CARTER
325 OLD BAYVIEW ROAD
NORTH EAST, MD 21901

Melissa D. Heldmyer
ALLYN PRICE NICKLE
Register of Wills

**IN THE ORPHANS' COURT FOR
(OR)**

CECIL COUNTY, MARYLAND

BEFORE THE REGISTER OF WILLS FOR

**IN THE ESTATE OF:
VIOLA EVELYN CARTER**

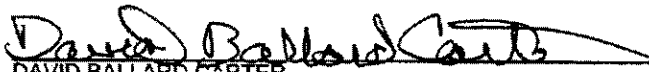
ESTATE NO. 18390

LIST OF INTERESTED PERSONS

Name (and age if under 18 years)	Last Known Address including Zip Code	Specify: Heir/Legatee/ Personal Representative	Relationship to Decedent
<u>DAVID BALLARD CARTER</u>	<u>325 OLD BAYVIEW ROAD NORTH EAST, MD 21901</u>	<u>HEIR/LEGATEE</u>	<u>SON</u>
<u>DAVID BALLARD CARTER</u>	<u>325 OLD BAYVIEW ROAD NORTH EAST, MD 21901</u>	<u>PER REP</u>	
<u>ESTATE OF JAMES WILLIAM CARTER</u>	<u>c/o: JOSHUA JAMES CARTER DECEASED DOD 1/13/2002 9 LIDUM ROAD ELKTON, MD 21921</u>	<u>OTHER</u>	<u>CHILD</u>
<u>SANDRA K CARTER</u>	<u>P O BOX 93 PEMBERTON, NJ 08068</u>	<u>HEIR</u>	<u>DAUGHTER</u>
<u>ONE PREDECEASED CHILD</u>	<u>DIANA LYNN CARTER-REVIS SURVIVED BY ONE CHILD</u>	<u>OTHER</u>	<u>DEC'D CHILD</u>
<u>SHANNON FAYE MERRILL</u>	<u>P O BOX 93 PEMBERTON, NJ 08068</u>	<u>HEIR/LEGATEE</u>	<u>GRANDDAUGHTER</u>

I solemnly affirm under the penalties of perjury that the contents of the foregoing list of interested persons are true to the best of my knowledge, information, and belief.

Attorney


DAVID BALLARD CARTER Date

Address

Petitioner/Personal Representative Date

Petitioner/Personal Representative Date

Telephone Number

Instructions:

- Interested persons include decedent's heirs (surviving spouse, children, and other persons who would inherit if there were no will) and, if decedent died with a will, the personal representative named in the will and all legatees (persons who inherit under the will). All heirs must be listed even if decedent dies with a will.
- This list must be filed (a) within 20 days after appointment of a personal representative under administrative probate or (b) at the time of filing a Petition for Judicial Probate or a Petition for Administration of a Small Estate.

RW1104

FILED 12/10/12
**REGISTER OF WILLS
CECIL COUNTY, MD**

ROWNET
11/2009