

**BEFORE THE VIRGINIA GAS AND OIL BOARD**

**PETITIONER:** EQT Production Company

**DIVISION OF GAS AND OIL**

**DOCKET NO:** VGOB 07-1016-2046-01

**RELIEF SOUGHT: (1) DISBURSEMENT FROM  
ESCROW REGARDING TRACT(S) A portion of 6  
(2) AND AUTHORIZATION FOR DIRECT  
PAYMENT OF ROYALTIES**

**HEARING DATE:** February 19, 2012

**DRILLING UNIT:** VC-537869

**DICKENSON COUNTY, VIRGINIA**

**PETITION FOR ORDER OF DISBURSEMENT OF ESCROW FUNDS**

**1. Petitioner and its counsel**

Petitioner is EQT Production Company, 225 North Shore Drive, Pittsburgh, PA 15212, (412)553-5700. Petitioner's counsel is James Kaiser, Wilhoit and Kaiser Law Firm, 220 Broad Street, Suite 210, Kingsport, TN 37660 .

**2. Relief Sought**

A petition for disbursement of Escrowed Funds from EQT Production Company on behalf of Edward Galyon and Rebecca J. Galyon, h/w for Drilling Unit Number VC-537869 created by Board Order Dated 12/17/2007 VGOB 07/10/16-2046 in Dickenson County, Virginia. Requesting disbursement of escrowed funds for interests of Edward Galyon and Rebecca J. Galyon held in Tract 6 of Drilling Unit Number VC-537869 located in Sandlick District of Dickenson County.

**3. Legal Authority**

Va. Code Ann. § 45.1-361.1 et seq., 4 VAC 25-160-140., and relevant Virginia Gas and Oil Board Orders ("Board") heretofore promulgated pursuant to law.

**4. Type of Well(s)**

Coalbed Methane

**5. Factual basis for relief requested**

Permanent Release of CBM Royalty letter dated February 22, 2011 from Range Resources-Pine Mountain, signed by Jerry Grantham, Vice President, waiving any claim to past or future royalties attributable to Edward Galyon and Rebecca J. Galyon for coalbed methane gas interests on the 128 acre tract. A portion of this tract is listed as Tract 6 on the plat for Well VC-537869.

**6. Attestation**

The foregoing Petition to the best of my knowledge, information, and belief is true and correct.

BK 446PG 137

5127'

TOTAL UNIT AREA  
= 58.77 ACRES

LATITUDE 37°10'00"

- DENOTES MINERAL LINE
- - - DENOTES SURFACE LINE
- DENOTES SURFACE & MINERAL LINES

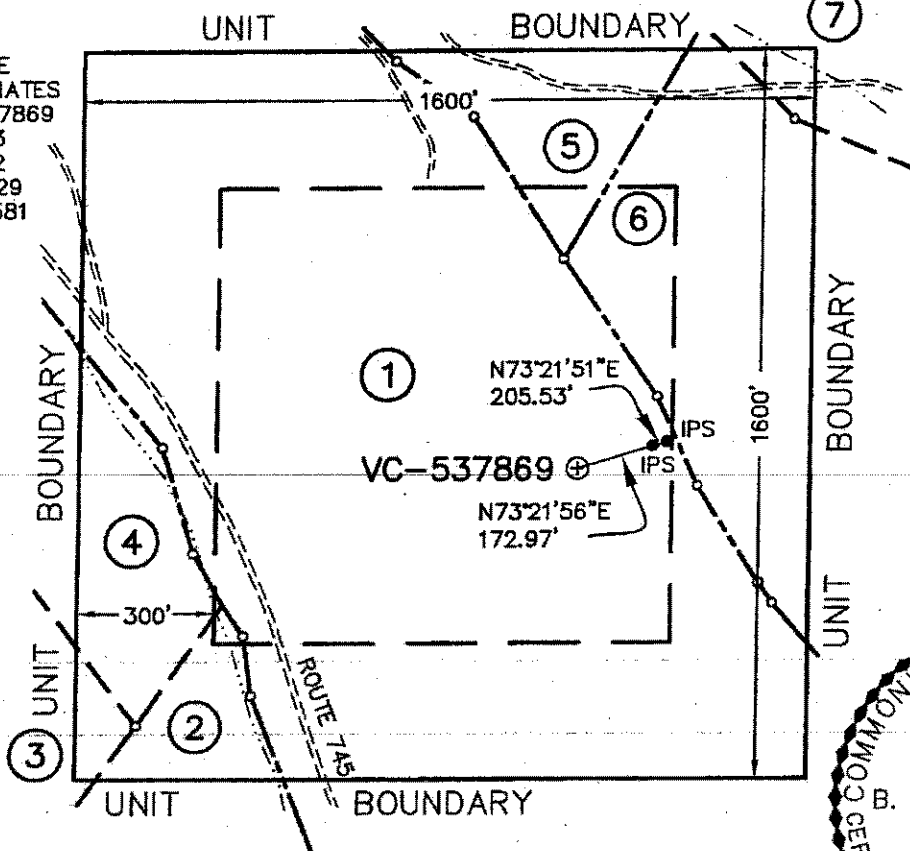
CCC COORDINATES  
OF WELL VC-537869  
N 21182.76  
E 33791.70

LONGITUDE 82°15'00"

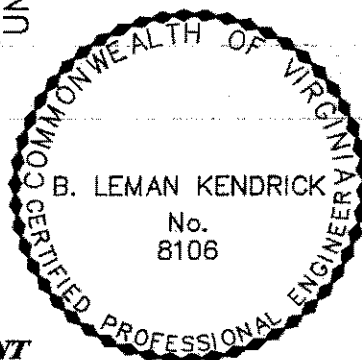
3110'



STATE PLANE  
NAD 27 COORDINATES  
OF WELL VC-537869  
N 322197.43  
E 902343.72  
LAT 37.158129  
LON -82.267581



COORDINATES  
OF BENCH MARK  
S 77498.41  
E 22826.48  
ELEV. = 1754.09



NOTE !!!

WELL COORDINATES ARE BASED ON CLINCHFIELD  
COAL COMPANY'S COORDINATE SYSTEM  
CLINCHFIELD COAL COMPANY COORDINATES ARE  
CALCULATED FROM STATE PLANE WELL COORDINATES.  
PROPERTY INFORMATION PROVIDED BY EQUITABLE  
PRODUCTION COMPANY.  
ELEVATIONS ARE BASED ON NGS CONTROL ST. PAUL 2.

NOTE !!

SEE WELL PLAT SUPPLEMENT  
SHEET 2 FOR TRACT INFORMATION.

WELL LOCATION PLAT

COMPANY Equitable Production Company WELL NAME AND NUMBER VC-537869

TRACT No. LEASE NO. 241490L / T-283 ELEVATION 1866.48 (GPS) QUADRANGLE HAYS

COUNTY DICKENSON DISTRICT SANDLUCK SCALE: 1" = 400' DATE September 6, 2007

THIS PLAT IS A NEW PLAT x; AN UPDATED PLAT    ; OR A FINAL LOCATION PLAT    

PROPOSED TOTAL DEPTH OF WELL =                     

+ DENOTES THE LOCATION OF A WELL ON UNITED STATES TOPOGRAPHIC MAPS, SCALE 1 TO  
24,000, LATITUDE AND LONGITUDE LINES BEING REPRESENTED BY BORDER LINES AS SHOWN.

*B. L. Kendrick* 9/6/07

(AFFIX SEAL)

LICENSED PROFESSIONAL ENGINEER OR LICENSED LAND SURVEYOR

①

Lease No. 241490L / T-283  
 B.H. EDWARDS  
 274.37 ACRES  
 HEARTWOOD FORESTLAND FUND IV - Surface  
 DICKENSON-RUSSELL COAL COMPANY, LLC/ALPHA  
 LAND & RESERVES, LLC/ACIN, LLC/WBRD, LLC - Coal  
 PINE MOUNTAIN OIL & GAS, INC. - Oil, Gas & CBM  
 GAS 40.15 AC. - 68.32%

②

Lease No. 241490L / T-283  
 B. H. EDWARDS  
 30.00 ACRES  
 RUTH & RUAL FULLER - Surface  
 DICKENSON-RUSSELL COAL COMPANY, LLC/ALPHA  
 LAND & RESERVES, LLC/ACIN, LLC/WBRD, LLC - Coal  
 UNLEASED  
 DOMINION MINING COMPANY - Oil, Gas (CBM)  
 PINE MOUNTAIN OIL & GAS, INC. - (CBM)  
 GAS 1.85 AC. - 3.15%

③

Lease No. 242008L  
 NELSON C. & MINNIE C. EDWARDS - oil, gas (CBM)  
 51.10 ACRES  
 LEASE No. 244792 TC-181  
 DICKENSON-RUSSELL COAL COMPANY, LLC/ALPHA LAND  
 & RESERVES, LLC/ACIN, LLC/WBRD, LLC - Coal  
 PINE MOUNTAIN OIL & GAS, INC. - (CBM)  
 GAS 0.50 AC. - 0.85%

④

Lease No. 241490L / T-303  
 JOHN HAY  
 199.61 ACRES  
 RUTH & RUAL FULLER - Surface  
 DICKENSON-RUSSELL COAL COMPANY, LLC/ALPHA  
 LAND & RESERVES, LLC/ACIN, LLC/WBRD, LLC - Coal  
 PINE MOUNTAIN OIL & GAS, INC. - Oil, Gas & CBM  
 GAS 3.45 AC. - 5.87%

⑤

Lease No. 241640L / T2-36  
 B.H. EDWARDS  
 34.00 ACRES (p.o. 119.64 Acres)  
 DICKENSON-RUSSELL COAL COMPANY, LLC/ALPHA  
 LAND & RESERVES, LLC/ACIN, LLC/WBRD, LLC - Coal  
 PINE MOUNTAIN OIL & GAS, INC. - Oil, Gas & CBM  
 GAS 3.10 AC. - 5.28%

⑥

Lease No. 243401L  
 RICHARD EDWARDS, et al. - oil, gas (CBM)  
 Lease No. 244792 / TC-182  
 C.A. WILLIS  
 128.00 ACRES  
 DICKENSON-RUSSELL COAL COMPANY, LLC/ALPHA LAND &  
 RESERVES, LLC/ACIN, LLC/WBRD, LLC - Coal  
 PINE MOUNTAIN OIL & GAS, INC. - (CBM)  
 GAS 9.30 AC. - 15.82%

⑦

Lease No. 241490L / T-230  
 JOHN ANDERSON  
 123.50 ACRES  
 DICKENSON-RUSSELL COAL COMPANY, LLC/ALPHA  
 LAND & RESERVES, LLC/ACIN, LLC/WBRD, LLC - Coal  
 PINE MOUNTAIN OIL & GAS, INC. - Oil, Gas & CBM  
 GAS 0.42 AC. - 0.71%



**THOMPSON & LITTON**

312 Clintwood Main Street  
 Suit 201  
 P.O. Box 1869  
 Clintwood, Virginia 24228

**EQUITABLE PRODUCTION COMPANY**  
**WELL No. VC-537869**  
**WELL PLAT SUPPLEMENT**  
**SHEET 2**

PROJECT No.:  
 VC-537869

SCALE: 1" = 400'

DATE: September 6, 2007



**EXHIBIT "B"**  
**VC-537869**  
**VGOB 07/10/16-2046**

<u>TRACT</u>	<u>LESSOR</u>	<u>LEASE STATUS</u>	<u>INTEREST WITHIN UNIT</u>	<u>GROSS ACREAGE IN UNIT</u>	<u>NET REVENUE INTEREST</u>	
<b><u>Gas Estate Only</u></b>						
1 TAX ID 20464	Pine Mountain Oil and Gas, INC. Attn: Jerry Grantham P.O. Box 2136 Abingdon, VA 24212	Leased 241490 T-283	68.320000%	40.1500	0.08540000	RI
	Equitable Production				0.59780000	WI
Tract 1 Totals			68.320000%	40.1500	0.68320000	
2 TAX ID Minerals Only	Dominion Mining Company Unknown Stockholders of Dominion Mining Company	Unleased	3.150000%	1.8500	0.00393750	RI
	Equitable Production				0.02756250	WI
Tract 2 Totals			3.150000%	1.8500	0.03150000	
3 TAX ID 7392	Nelson C. Edwards and Minnie C. Edwards, h/w P.O. Box 101 Birchleaf, VA 24220	Leased 242008	0.637500%	0.3750	0.00079688	RI
	Pine Mountain Oil & Gas, Inc. ATTN: Jerry Grantham P.O. Box 2136 Abingdon, VA. 24212	Leased 244792/ TC-181	0.212500%	0.1250	0.00026563	
	Equitable Production				0.00743750	WI
Tract 3 Totals			0.850000%	0.5000	0.00850000	
4 TAX ID 20483	Pine Mountain Oil and Gas, INC. Attn: Jerry Grantham P.O. Box 2136 Abingdon, VA 24212	Leased 241490 T-303	5.870000%	3.4500	0.00733750	RI
	Equitable Production				0.05136250	WI
Tract 4 Totals			5.870000%	3.4500	0.05870000	
5 TAX ID 20964	Pine Mountain Oil and Gas, INC. Attn: Jerry Grantham P.O. Box 2136 Abingdon, VA 24212	Leased 241640 T2-36	5.280000%	3.1000	0.00660000	RI
	Equitable Production				0.04620000	WI
Tract 5 Totals			5.280000%	3.1000	0.05280000	

6	Richard Wade Edwards and Rita Owens Edwards, h/w P.O. Box 127 Birchleaf, VA 24220	Leased 243401	7.910000%	4.6500	0.00988750	RI
	Rebecca J. Galyon and Edward Galyon, w/h 12113 South Piney Point Bishopville, MD 21813	Leased 243401	7.910000%	4.6500	0.00988750	RI
	Equitable Production				0.13842500	WI
Tract 6 Totals			15.820000%	9.3000	0.15820000	
7	Pine Mountain Oil and Gas, INC. Attn: Jerry Grantham P.O. Box 2136 Abingdon, VA 24212	Leased 241490 T-230	0.710000%	0.4200	0.00088750	RI
	Equitable Production				0.00621250	WI
Tract 7 Totals			0.710000%	0.4200	0.00710000	
<b>TOTAL GAS ESTATE</b>			<b>100.000000%</b>	<b>58.7700</b>	<b>1.00000000</b>	

**Coal Estate Only**

1	Pine Mountain Oil and Gas, INC. Attn: Jerry Grantham P.O. Box 2136 Abingdon, VA 24212	Leased 241490 T-283	68.320000%	40.1500	0.08540000	RI
	Equitable Production				0.59780000	WI
Tract 1 Totals			68.320000%	40.1500	0.68320000	
2	Pine Mountain Oil and Gas, INC. Attn: Jerry Grantham P.O. Box 2136 Abingdon, VA 24212	Leased 241490 T-283	3.150000%	1.8500	0.00393750	RI
	Equitable Production				0.02756250	WI
Tract 2 Totals			3.150000%	1.8500	0.03150000	
3	Pine Mountain Oil & Gas, Inc. ATTN: Jerry Grantham P.O. Box 2136 Abingdon, VA. 24212	Leased 244792/ TC-181	0.850000%	0.5000	0.00106250	RI
	Equitable Production				0.00743750	WI
Tract 3 Totals			0.850000%	0.5000	0.00850000	
4	Pine Mountain Oil & Gas, Inc. ATTN: Jerry Grantham P.O. Box 2136	Leased 241490/ T-303	5.870000%	3.4500	0.00733750	RI

Abingdon, VA. 24212

	Equitable Production				0.05136250	WI
Tract 4 Totals			5.870000%	3.4500	0.05870000	
5	Pine Mountain Oil & Gas, Inc.	Leased	5.280000%	3.1000	0.00660000	RI
TAX ID # 20964	ATTN: Jerry Grantham	241640/ T2-36				
	P.O. Box 2136					
	Abingdon, VA. 24212					
	Equitable Production				0.04620000	WI
Tract 5 Totals			5.280000%	3.1000	0.05280000	
6	Pine Mountain Oil & Gas, Inc.	Leased	15.820000%	9.3000	0.01977500	RI
TAX ID # 11924	ATTN: Jerry Grantham	244792/ TC-182				
	P.O. Box 2136					
	Abingdon, VA. 24212					
	Equitable Production				0.13842500	WI
Tract 6 Totals			15.820000%	9.3000	0.15820000	
7	Pine Mountain Oil & Gas, Inc.	Leased	0.710000%	0.4200	0.00088750	RI
TAX ID # 20410	ATTN: Jerry Grantham	241490/ T-230				
	P.O. Box 2136					
	Abingdon, VA. 24212					
	Equitable Production				0.00621250	WI
Tract 7 Totals			0.710000%	0.4200	0.00710000	
<b>TOTAL</b>			<b>100.000000%</b>	<b>58.7700</b>	<b>1.00000000</b>	

**EXHIBIT "E"**  
**VC-537869**

<u>TR</u>	<u>LESSOR</u>	<u>LEASE STATUS</u>	<u>INTEREST WITHIN UNIT</u>	<u>GROSS ACREAGE IN UNIT</u>
<u>Gas Estate Only</u>				
2	Dominion Mining Company Unknown Stockholders of Dominion Mining Company TAX ID Minerals Only	Unleased	3.150000%	1.8500
6	Richard Wade Edwards and Rita Owens Edwards, h/w P.O. Box 127 Birchleaf, VA 24220 TAX ID 6985	Leased 243401	7.910000%	4.6500
<b>TOTAL</b>			<b>11.060000%</b>	<b>6.5000</b>
<u>Coal Estate Only</u>				
2	Pine Mountain Oil and Gas, INC. Attn: Jerry Grantham P.O. Box 2136 Abingdon, VA 24212 TAX ID 20464	Leased 241490 T-283	3.150000%	1.8500
6	Pine Mountain Oil and Gas, INC. Attn: Jerry Grantham P.O. Box 2136 Abingdon, VA 24212 TAX ID # 11924	Leased 244792/ TC-182	7.910000%	4.6500
<b>TOTAL</b>			<b>11.060000%</b>	<b>6.5000</b>

**EXHIBIT "EE"**

**VC-537869**

4/4/2011

Revised 2/7/2013

<u>TRACT</u>	<u>LESSOR</u>	<u>LEASE STATUS</u>	<u>INTEREST WITHIN UNIT</u>	<u>GROSS ACREAGE IN UNIT</u>
<u>Gas Estate Only</u>				
6 TAX ID 6985	Rebecca J. Galyon and Edward Galyon, w/h 12113 South Piney Point Bishopville, MD 21813	Leased 243401	7.910000%	4.6500
<b>Total</b>			<b>7.910000%</b>	<b>4.6500</b>

---

Prod Date	Pmt Date	Deck Decimal	Dist Decimal	Owner Net
11/1/2007	07/14/2008	0.00393750	0.00393750	\$6.91
11/1/2007	7/14/2008	0.0039375	0.0039375	\$1.70
11/1/2007	7/14/2008	0.0039375	0.0039375	\$4.35
11/1/2007	7/14/2008	0.019775	0.019775	\$29.75
11/1/2007	7/14/2008	0.019775	0.019775	\$8.53
11/1/2007	7/14/2008	0.019775	0.019775	\$21.82
11/1/2007	7/14/2008	0.0010625	0.0010625	\$1.61
11/1/2007	7/14/2008	0.0010625	0.0010625	\$0.45
11/1/2007	7/14/2008	0.0010625	0.0010625	\$1.17
12/1/2007	7/14/2008	0.024775	0.024775	\$53.25
12/1/2007	7/14/2008	0.024775	0.024775	\$21.53
12/1/2007	7/14/2008	0.024775	0.024775	\$76.70
1/1/2008	7/14/2008	0.024775	0.024775	\$15.61
1/1/2008	7/14/2008	0.024775	0.024775	\$52.09
1/1/2008	7/14/2008	0.024775	0.024775	\$38.07
2/1/2008	7/14/2008	0.024775	0.024775	\$38.69
2/1/2008	7/14/2008	0.024775	0.024775	\$11.44
2/1/2008	7/14/2008	0.024775	0.024775	\$57.40
3/1/2008	7/14/2008	0.024775	0.024775	\$44.40
3/1/2008	7/14/2008	0.024775	0.024775	\$17.66
3/1/2008	7/14/2008	0.024775	0.024775	\$59.17
4/1/2008	7/14/2008	0.024775	0.024775	\$21.94
4/1/2008	7/14/2008	0.024775	0.024775	\$86.88
4/1/2008	7/14/2008	0.024775	0.024775	\$46.46
5/1/2008	7/14/2008	0.024775	0.024775	\$22.29
5/1/2008	7/14/2008	0.024775	0.024775	\$80.33
5/1/2008	7/14/2008	0.024775	0.024775	\$61.20
6/1/2008	8/7/2008	0.024775	0.024775	\$29.43
6/1/2008	8/7/2008	0.024775	0.024775	\$86.17
6/1/2008	8/7/2008	0.024775	0.024775	\$69.30
7/1/2008	9/5/2008	0.024775	0.024775	\$27.07
7/1/2008	9/5/2008	0.024775	0.024775	\$74.26
7/1/2008	9/5/2008	0.024775	0.024775	\$93.43
8/1/2008	10/10/2008	0.024775	0.024775	\$19.21
8/1/2008	10/10/2008	0.024775	0.024775	\$63.47
8/1/2008	10/10/2008	0.024775	0.024775	\$49.45
9/1/2008	11/7/2008	0.024775	0.024775	\$59.55
9/1/2008	11/7/2008	0.024775	0.024775	\$44.70
9/1/2008	11/7/2008	0.024775	0.024775	\$13.84
10/1/2008	12/9/2008	0.024775	0.024775	\$18.42
10/1/2008	12/9/2008	0.024775	0.024775	\$49.64
10/1/2008	12/9/2008	0.024775	0.024775	\$42.09
11/1/2008	1/12/2009	0.024775	0.024775	\$36.18
11/1/2008	1/12/2009	0.024775	0.024775	\$45.88
11/1/2008	1/12/2009	0.024775	0.024775	\$12.95
11/1/2008	1/12/2009	0.024775	0.024775	-\$12.95
11/1/2008	1/12/2009	0.024775	0.024775	-\$45.88
11/1/2008	1/12/2009	0.024775	0.024775	-\$36.18
11/1/2008	1/12/2009	0.024775	0.024775	\$12.81
11/1/2008	1/12/2009	0.024775	0.024775	\$45.36
11/1/2008	1/12/2009	0.024775	0.024775	\$35.76
12/1/2008	2/11/2009	0.024775	0.024775	\$15.08
12/1/2008	2/11/2009	0.024775	0.024775	\$52.65
12/1/2008	2/11/2009	0.024775	0.024775	\$42.22
1/1/2009	3/10/2009	0.024775	0.024775	\$48.56
1/1/2009	3/10/2009	0.024775	0.024775	\$13.57
1/1/2009	3/10/2009	0.024775	0.024775	\$38.73
2/1/2009	4/9/2009	0.024775	0.024775	\$8.20
2/1/2009	4/9/2009	0.024775	0.024775	\$31.83
2/1/2009	4/9/2009	0.024775	0.024775	\$24.87
3/1/2009	5/12/2009	0.024775	0.024775	\$10.52
3/1/2009	5/12/2009	0.024775	0.024775	\$29.95
3/1/2009	5/12/2009	0.024775	0.024775	\$25.40
4/1/2009	6/8/2009	0.024775	0.024775	\$8.15
4/1/2009	6/8/2009	0.024775	0.024775	\$19.70
4/1/2009	6/8/2009	0.024775	0.024775	\$20.68
5/1/2009	7/10/2009	0.024775	0.024775	\$8.76
5/1/2009	7/10/2009	0.024775	0.024775	\$19.68
5/1/2009	7/10/2009	0.024775	0.024775	\$22.14
6/1/2009	8/12/2009	0.024775	0.024775	\$10.05
6/1/2009	8/12/2009	0.024775	0.024775	\$21.36
6/1/2009	8/12/2009	0.024775	0.024775	\$23.15
7/1/2009	9/10/2009	0.02397812	0.02397812	\$23.19
7/1/2009	9/10/2009	0.02397812	0.02397812	\$23.54
7/1/2009	9/10/2009	0.02397812	0.02397812	\$11.39
8/1/2009	10/12/2009	0.02397812	0.02397812	\$10.41
8/1/2009	10/12/2009	0.02397812	0.02397812	\$19.80
8/1/2009	10/12/2009	0.02397812	0.02397812	\$20.51
9/1/2009	11/9/2009	0.02397812	0.02397812	\$15.57
9/1/2009	11/9/2009	0.02397812	0.02397812	\$7.51
9/1/2009	11/9/2009	0.02397812	0.02397812	\$17.51
10/1/2009	12/9/2009	0.02397812	0.02397812	\$23.88
10/1/2009	12/9/2009	0.02397812	0.02397812	\$26.59
10/1/2009	12/9/2009	0.02397812	0.02397812	\$12.24
11/1/2009	1/13/2010	0.02397812	0.02397812	\$29.63
11/1/2009	1/13/2010	0.02397812	0.02397812	\$34.11
11/1/2009	1/13/2010	0.02397812	0.02397812	\$13.10
12/1/2009	2/10/2010	0.02397812	0.02397812	\$24.43

12/1/2009	2/10/2010	0.02397812	0.02397812	\$32.03
12/1/2009	2/10/2010	0.02397812	0.02397812	\$10.83
1/1/2010	3/9/2010	0.02397812	0.02397812	\$10.51
1/1/2010	3/9/2010	0.02397812	0.02397812	\$25.74
1/1/2010	3/9/2010	0.02397812	0.02397812	\$22.10
2/1/2010	4/14/2010	0.02397812	0.02397812	\$14.02
2/1/2010	4/14/2010	0.02397812	0.02397812	\$16.40
2/1/2010	4/14/2010	0.02397812	0.02397812	\$6.47
3/1/2010	5/10/2010	0.02397812	0.02397812	\$23.73
3/1/2010	5/10/2010	0.02397812	0.02397812	\$27.20
3/1/2010	5/10/2010	0.02397812	0.02397812	\$11.89
4/1/2010	6/8/2010	0.02397812	0.02397812	\$12.28
4/1/2010	6/8/2010	0.02397812	0.02397812	\$31.17
4/1/2010	6/8/2010	0.02397812	0.02397812	\$25.72
5/1/2010	7/13/2010	0.02397812	0.02397812	\$13.56
5/1/2010	7/13/2010	0.02397812	0.02397812	\$6.01
5/1/2010	7/13/2010	0.02397812	0.02397812	\$16.02
6/1/2010	8/10/2010	0.02397812	0.02397812	\$11.28
6/1/2010	8/10/2010	0.02397812	0.02397812	\$13.28
6/1/2010	8/10/2010	0.02397812	0.02397812	\$4.97
7/1/2010	9/10/2010	0.02397812	0.02397812	\$16.96
7/1/2010	9/10/2010	0.02397812	0.02397812	\$6.70
7/1/2010	9/10/2010	0.02397812	0.02397812	\$19.43
8/1/2010	10/11/2010	0.02397812	0.02397812	\$39.31
8/1/2010	10/11/2010	0.02397812	0.02397812	\$44.18
8/1/2010	10/11/2010	0.02397812	0.02397812	\$20.02
9/1/2010	11/11/2010	0.02397812	0.02397812	\$14.42
9/1/2010	11/11/2010	0.02397812	0.02397812	\$36.82
9/1/2010	11/11/2010	0.02397812	0.02397812	\$31.43
10/1/2010	12/9/2010	0.02397812	0.02397812	\$33.32
10/1/2010	12/9/2010	0.02397812	0.02397812	\$41.49
10/1/2010	12/9/2010	0.02397812	0.02397812	\$15.46
11/1/2010	1/13/2011	0.02397812	0.02397812	\$13.34
11/1/2010	1/13/2011	0.02397812	0.02397812	\$36.66
11/1/2010	1/13/2011	0.02397812	0.02397812	\$29.07
12/1/2010	2/11/2011	0.02397812	0.02397812	\$44.31
12/1/2010	2/11/2011	0.02397812	0.02397812	\$18.22
12/1/2010	2/11/2011	0.02397812	0.02397812	\$56.95
1/1/2011	3/11/2011	0.02397812	0.02397812	\$61.67
1/1/2011	3/11/2011	0.02397812	0.02397812	\$25.55
1/1/2011	3/11/2011	0.02397812	0.02397812	\$52.43
2/1/2011	4/12/2011	0.02397812	0.02397812	\$35.16
2/1/2011	4/12/2011	0.02397812	0.02397812	\$12.25
2/1/2011	4/12/2011	0.02397812	0.02397812	\$27.86
3/1/2011	5/11/2011	0.02397812	0.02397812	\$24.07
3/1/2011	5/11/2011	0.02397812	0.02397812	\$66.66
3/1/2011	5/11/2011	0.02397812	0.02397812	\$52.59
4/1/2011	6/11/2011	0.02397812	0.02397812	\$77.35
4/1/2011	6/11/2011	0.02397812	0.02397812	\$26.48
4/1/2011	6/11/2011	0.02397812	0.02397812	\$60.00
5/1/2011	7/13/2011	0.02397812	0.02397812	\$33.49
5/1/2011	7/13/2011	0.02397812	0.02397812	\$80.81
5/1/2011	7/13/2011	0.02397812	0.02397812	\$68.81
6/1/2011	8/10/2011	0.02397812	0.02397812	\$35.84
6/1/2011	8/10/2011	0.02397812	0.02397812	\$88.28
6/1/2011	8/10/2011	0.02397812	0.02397812	\$74.86
7/1/2011	9/12/2011	0.02397812	0.02397812	\$79.28
7/1/2011	9/12/2011	0.02397812	0.02397812	\$96.86
7/1/2011	9/12/2011	0.02397812	0.02397812	\$38.87
8/1/2011	10/12/2011	0.02397812	0.02397812	\$41.09
8/1/2011	10/12/2011	0.02397812	0.02397812	\$99.10
8/1/2011	10/12/2011	0.02397812	0.02397812	\$82.79
9/1/2011	11/10/2011	0.02397812	0.02397812	\$36.51
9/1/2011	11/10/2011	0.02397812	0.02397812	\$82.79
9/1/2011	11/10/2011	0.02397812	0.02397812	\$68.76
10/1/2011	12/9/2011	0.02397812	0.02397812	\$68.97
10/1/2011	12/9/2011	0.02397812	0.02397812	\$32.54
10/1/2011	12/9/2011	0.02397812	0.02397812	\$89.52
11/1/2011	1/17/2012	0.02397812	0.02397812	\$64.46
11/1/2011	1/17/2012	0.02397812	0.02397812	\$30.23
11/1/2011	1/17/2012	0.02397812	0.02397812	\$84.50
12/1/2011	2/10/2012	0.02397812	0.02397812	\$78.18
12/1/2011	2/10/2012	0.02397812	0.02397812	\$25.29
12/1/2011	2/10/2012	0.02397812	0.02397812	\$58.51
1/1/2012	3/12/2012	0.02397812	0.02397812	\$61.26
1/1/2012	3/12/2012	0.02397812	0.02397812	\$25.01
1/1/2012	3/12/2012	0.02397812	0.02397812	\$83.12
2/1/2012	4/13/2012	0.02397812	0.02397812	\$44.23
2/1/2012	4/13/2012	0.02397812	0.02397812	\$60.24
2/1/2012	4/13/2012	0.02397812	0.02397812	\$16.85
3/1/2012	5/11/2012	0.02397812	0.02397812	\$42.09
3/1/2012	5/11/2012	0.02397812	0.02397812	\$54.66
3/1/2012	5/11/2012	0.02397812	0.02397812	\$20.03
4/1/2012	6/12/2012	0.02397812	0.02397812	\$29.99
4/1/2012	6/12/2012	0.02397812	0.02397812	\$14.12
4/1/2012	6/12/2012	0.02397812	0.02397812	\$39.01
5/1/2012	7/11/2012	0.02397812	0.02397812	\$30.31
5/1/2012	7/11/2012	0.02397812	0.02397812	\$38.80
5/1/2012	7/11/2012	0.02397812	0.02397812	\$15.11
6/1/2012	8/10/2012	0.02397812	0.02397812	\$38.56

6/1/2012	8/10/2012	0.02397812	0.02397812	\$19.15
6/1/2012	8/10/2012	0.02397812	0.02397812	\$49.51
7/1/2012	9/12/2012	0.02397812	0.02397812	\$21.36
7/1/2012	9/12/2012	0.02397812	0.02397812	\$64.90
7/1/2012	9/12/2012	0.02397812	0.02397812	\$48.62
8/1/2012	10/10/2012	0.02397812	0.02397812	\$52.68
8/1/2012	10/10/2012	0.02397812	0.02397812	\$71.05
8/1/2012	10/10/2012	0.02397812	0.02397812	\$22.07
9/1/2012	11/9/2012	0.02397812	0.02397812	\$42.09
9/1/2012	11/9/2012	0.02397812	0.02397812	\$52.80
9/1/2012	11/9/2012	0.02397812	0.02397812	\$22.47
10/1/2012	12/12/2012	0.02397812	0.02397812	\$73.48
10/1/2012	12/12/2012	0.02397812	0.02397812	\$20.71
10/1/2012	12/12/2012	0.02397812	0.02397812	\$53.24
11/1/2012	1/10/2013	0.02397812	0.02397812	\$28.64
11/1/2012	1/10/2013	0.02397812	0.02397812	\$85.27
11/1/2012	1/10/2013	0.02397812	0.02397812	\$64.78
				<u>\$6,814.94</u>

Unit Name	Docket #	Unit Operator	Beginning Market		Deposit Type	Money Mkt		CDARS Interest	Fees for 10/2012	Distributions	Audit Costs	Corrections*	Ending Market
			Value	Type		Deposits	Interest						Value
8002046	VC537869	2046	FCIT	\$6,423.09		\$147.43	\$0.24	\$1.50	(\$0.54)		(\$0.75)		\$6,570.97



February 22, 2011

**RANGE RESOURCES**

Mr. Edward Galyon  
Mrs. Rebecca J. Galyon  
12113 South Pincypoint Road  
Bishopville, MD 21813

Re: **Permanent Release of CBM Royalty  
Well VC-537876, VC-537873, VC-537869, VC-537875, and  
VC-537872; Dickenson County, Virginia**

Dear Mr. and Mrs. Galyon:

As you are aware, EQT Production Company ("EQT") has drilled the above-referenced coalbed methane gas wells on a 128 acre tract ("Subject Tract") under a pooling order from the Virginia Gas and Oil Board ("Board"). In the pooling order, we are listed as having conflicting claims. Range Resources - Pine Mountain, Inc. ("RRPM") is listed as claiming under a coal title, and you are listed as claiming under a gas title. The plats indicating the locations of the wells within the operating units are enclosed for your reference.

EQT, as operator of the units, has placed all royalty proceeds attributable to conflicting claims into an escrow account. In order to allow release of the escrowed funds, RRPM hereby waives any claims to past or to future royalties attributable to your interest in these wells.

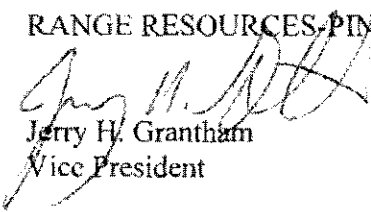
By copy of this letter, RRPM is requesting EQT to initiate distribution directly to you of all escrowed royalties, as well as all future royalties, attributable to your interests in this well.

Please be advised that EQT may require that you demonstrate that you are the current owner of the gas estate subject to the pooling order. You should work directly with EQT on that issue.

If you have any questions, please do not hesitate to call me at 276-619-2584

Sincerely,

RANGE RESOURCES-PINE MOUNTAIN, INC.

  
Jerry H. Grantham

Vice President

Enclosure

cc: Kristie Shannon, EQT  
Rita Barrett, EQT  
E. Strouth, EQT  
Debbie Louthian, RRPM